



2021 CHERRY CREEK

Investing in Excellence

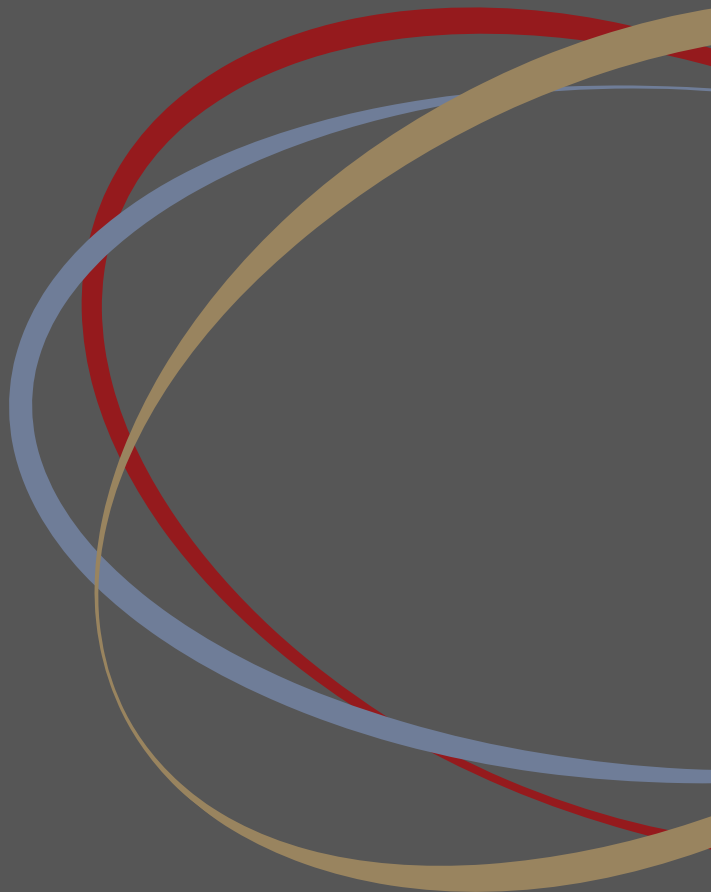
BUDGET, BOND & INNOVATION RECOMMENDATIONS





OUR MISSION

To inspire every student to think,
to learn, to achieve, to care.



Dedicated to Excellence
Cherry Creek Schools



OUR VALUES



- ▶ Placing the needs and welfare of students above all else.
- ▶ Providing safe and caring environments for learning.
- ▶ Holding high expectations for the growth and achievement of each student.
- ▶ Developing meaningful relationships with students and families.
- ▶ Respecting and understanding the diversity of the students and families we serve.
- ▶ Engaging students, parents, and community members as partners in the educational process.
- ▶ Promoting involvement and empowerment.
- ▶ Attracting quality personnel who reflect the diversity of our community, are knowledgeable, and care deeply about young people.
- ▶ Demonstrating a strong service orientation to attain the vision.
- ▶ Encouraging creativity and innovation to attain the vision.
- ▶ Improving the organization continuously.
- ▶ Fostering a desire for lifelong learning, achievement, and service to others.



TABLE OF CONTENTS

Message From the Board of Education	3
Superintendent's Message	4
Great Neighborhood Schools	6
Opportunities for Success	7
Executive Summary.....	8
Investing in Excellence.....	9
 Budget Development	 10
 Career and Innovation/Technology	 14
 Five-Year Facility Plan	 26
Long-Range Facility Planning Committee	26
Needs Planning	30
District Projected Enrollment.....	31
School Feeder Systems	32
Renovations and Facility Upgrades	50
 Safety and Security.....	 58
 Maintaining Community Investment.....	 61
Recommended Major Maintenance Expenses.....	62
Individual School Pages.....	64
Elementary School Pages	66
Middle School Pages.....	109
High School Pages.....	120



2021

CHERRY CREEK



MESSAGE FROM THE BOARD OF EDUCATION



PRESIDENT
Randy Perlis

VICE-PRESIDENT
Dave Willman

TREASURER
Karen Fisher

SECRETARY
Janice McDonald

ASSISTANT SECRETARY/TREASURER
Eric Parish

THE CHERRY CREEK CULTURE OF EXCELLENCE

The Cherry Creek School District was founded in 1950 as a collection of rural schools serving about 1,200 students. Today, we have 41 elementary schools, 10 middle schools, and seven high schools serving more than 54,700 students across 108 square miles. Throughout its history, Cherry Creek has built a national reputation for educational excellence.

We are proud that 99.80% of our teachers are Highly Qualified under the No Child Left Behind Act, over 73% of our faculty members have advanced degrees, and they average 10 years of experience. Cherry Creek has the third highest number of National Board Certified teachers in the state.

Our great neighborhood schools include eight National Blue Ribbon Schools and many schools that have earned John Irwin School of Excellence and Governor's Distinguished Improvement honors. They offer our students a world of opportunities for success in academics, the arts, athletics, and activities.

With the steadfast support of our outstanding teachers, our students are able to grow and excel academically. Our students consistently score above state and national averages on assessments including the ACT and SAT tests. Our on-time graduation rate is 87% compared to the state average of 77% and the national average of 78.2%. The Class of 2015 earned more than \$58 million in scholarships. Most importantly, our students leave us with the knowledge and skills they need to succeed in higher education, the military, the global workforce, and our democratic society.

The Cherry Creek School District is "Dedicated to Excellence" and committed to our mission, "To inspire every student to think, to learn, to achieve, to care."



SUPERINTENDENT'S MESSAGE

Excellence is a moving target, and in the Cherry Creek School District it's always moving up.

Since the formal inception of the district in 1950, excellence has been a core value in Cherry Creek, along with a commitment “to inspire every student to think, to learn, to achieve, to care.” While those standards have remained constant for more than 65 years, their application in the classroom has evolved.

As we look to chart the course of the district for future generations of students, it is important to think of the challenges they will face in an increasingly complex and interconnected world. That was the inspiration behind the Cherry Creek 2021 initiative, a process that sought feedback from the entire community over an extended period of time. As administrators, teachers, staff, and community members, we wanted insights about what students should know, understand, and be able to do when they graduate and move into the 21st century workforce.

What we found was intriguing, and it has guided some very specific projects for Cherry Creek schools. Specifically, the process helped steer plans behind the 2016 bond and budget election. The measure will seek \$23.9 million in a budget (mill levy override) issue, and \$250 million in a bond issue. The cost for a home valued at \$350,000 in the district would be approximately \$8 per month.

Thanks to the investment, commitment, and hard work of the entire Cherry Creek community, we have exciting plans tied to the upcoming election. Our vision is to strengthen and update the world-class resources that we already have in place, just as we add new tools and options to help our students prepare for the future.

Maintaining our role as good stewards of community resources is a priority, and that is why our plans include supporting a host of critical facility improvements across the district. Whether it is replacing critical HVAC components at our Central Transportation Terminal or replacing roofs, plumbing, and wiring in our schools, we want to make sure we are taking care of our existing infrastructure.

Similarly, the bond and budget election would support the core values that have always made Cherry Creek a special place. We are committed to maintaining reasonable class size across the district, attracting and retaining quality classroom teachers, and funding important updates to Cherry Creek's security systems and technology. Building a new elementary school and a new middle school in the Cherokee Trail High School feeder area would accommodate anticipated growth in that part of CCSD.



2021

CHERRY CREEK



Our present plans must also account for the challenges our students will face in the future. We have made plans for a career and innovation academy, a facility that would be open to all high school students in Cherry Creek. With curriculum rooted in real-world skills and trades ranging from automotive technology to computer science to aerospace, this academy would offer students a new kind of bridge to viable careers.

This one-of-a-kind space is only one piece of a larger puzzle when it comes to preparing Cherry Creek School District students for the demands of the 21st century. We want to provide opportunities for all students at all levels, and that commitment is behind plans for customized spaces for innovation and collaboration in every elementary and middle school across the district.

As students face an ever-changing and more competitive job market, these plans would offer an integral key. More importantly, the new facilities and all important updates would support the fundamental mission of the Cherry Creek School District. Whether a student wants to pursue a college career, head directly into the workforce, or enlist in the military, we want to offer tools to help see their dreams realized.

Staying true to our long-held values is a priority in Cherry Creek. Thanks to input from the entire community, we are finding ways to ensure that those values keep up with a changing and evolving world.

Dr. Harry Bull
Superintendent







GREAT NEIGHBORHOOD SCHOOLS

“All children deserve a great school in their neighborhood, one they can walk or ride the bus to with their friends. These friendships between children and their families unite communities and make them stronger.”

DR. HARRY BULL,
SUPERINTENDENT

TOTAL STUDENTS	54,700+	<p>11.3% African-American</p> <p>.6% American Indian/Alaskan Native</p> <p>8.5% Asian</p> <p>18.9% Hispanic</p> <p>.2% Native Hawaiian/Pacific Islander</p> <p>6.2% Two or more races</p> <p>54.3% White</p> <p>29% of our students qualify for free and reduced lunch.</p>	
TOTAL TEACHERS	3,600+	<p>Average Class Size</p> <p>24.1 Students Grades K-5</p> <p>25.9 Students Grades 6-8</p> <p>25.7 Students Grades 9 -12</p>	<p>More than 73% of Cherry Creek faculty have advanced degrees and teachers have an average of 10 years of experience. The Cherry Creek School District has the third-highest number of National Board Certified teachers in Colorado.</p>
TOTAL SCHOOLS	60	<p>41 Elementary Schools (K-5)</p> <p>10 Middle Schools (6-8)</p> <p>7 High Schools (9-12)</p> <p>1 Magnet School (K-8)</p> <p>1 Charter School (K-8)</p>	

	CCSD	STATE	NATION
ACT Composite Score, 2015* Graduating Seniors	22.07	20.7	21.0
ACT Composite Score, 2015* 11th graders**	21.9	20.3	**

*Most recent data available. **There is not a national average for 11th grade ACT scores.



2021
CHERRY CREEK



OPPORTUNITIES FOR SUCCESS

STEM EDUCATION

From kindergarten through graduation, Cherry Creek School District students are immersed in science, technology, engineering, and mathematics (STEM) education. STEM is an interdisciplinary approach to teaching and learning using rigorous academic concepts and real-world experiences. It begins with the hands-on FOSS science curriculum and continues with cutting-edge fabrication labs and classes in everything from aviation and biomedicine to computer science and engineering.

Students have the opportunity to participate in many STEM projects, clubs, and competitions, including First LEGO League, robotics, weather balloon launches, state and national science fairs, and much more. STEM is important to our students' long-term success, as 90 percent of future jobs will require technological knowledge. In addition, careers in STEM fields are the fastest growing and highest paying positions in the 21st-century global economy.

Get more information at www.cherrycreekschools.org/STEM



SUCCESS FOR EVERY STUDENT



The Cherry Creek School District is committed to the success of each and every one of our 54,700+ students. Raising the academic achievement of ALL students, closing the gap between the highest and lowest performing students, and eliminating the predictability of achievement by race is one of Cherry Creek's two overarching goals. The other is preparing ALL students for college and other post-secondary options, including vocational/technical education, the military, and the workforce.

CAREER & TECHNICAL EDUCATION

The Cherry Creek School District's Career and Technical Education (CTE) program connects students with viable and valuable educational opportunities that offer them access to the next generation of careers in a variety of fields, including advanced manufacturing, aviation, automotive, ProStart culinary programs, graphic design, hospitality, and medical careers.

"We strive to empower students to participate in programs that are designed to engage them in high-demand career fields. It's instruction that's hands-on and engaging, rigorous and relevant," said Jay Moore, Director of CCSD's CTE program. He added that the program offers more than a dozen career clusters and 17 specific CTE pathways as identified by the state. "Our vision is to provide students with the opportunity of post-secondary career training and choices."

Get more information at www.cherrycreekschools.org/CTE



EXECUTIVE SUMMARY

The next iteration of EXCELLENCE in Cherry Creek Schools

Budget, Bond & Innovation Recommendations for Cherry Creek Schools, April 2016

BUDGET ELECTION \$23.9 MILLION	BUDGET DEVELOPMENT	\$23.9 MILLION
	Due to continued underfunding by the state of Colorado (\$50 million annually), CCSD is facing a shortfall of more than \$20 million in 2017-2018. To maintain class size, recruit and retain a quality teaching staff for students, and continue to prepare all students for college and career post-secondary success, CCSD requires new operating funds or faces drastic reductions.	
BOND ELECTION \$250 MILLION	CAREER & INNOVATION/TECHNOLOGY	\$77.7 MILLION
	Through the community-based CC2021 process of updating graduation requirements, parents, students, staff, CCSD graduates, and local business owners all shared the same information – we must prepare students differently for the workforce they will enter in the future. A focus on innovation, critical thinking, real world experiences, project-based learning, relevancy, communication skills, adaptability, and working in teams is critical.	
	<ul style="list-style-type: none">▶ Every elementary school will receive \$500,000, and every middle school will receive \$750,000 to work collaboratively with their community to renovate space to support 21st-century teaching and learning.▶ CCSD will construct and equip a career and innovation academy to increase the pathways for students to complete high school. A stand-alone, central facility available to all Cherry Creek 11th and 12th grade students to ensure preparation for college and career in the 21st century. Potential areas of study are aligned with the Colorado Workforce Development Council and include: Automotive, Construction, Health, Hospitality, Energy, Advanced Manufacturing, Aviation/Aerospace, and Computer Science.▶ Information Systems upgrades will include: Wireless Network, Web Filtering and Firewall Systems, Data Center Upgrades, Classroom Projection Refresh, Technology Asset Management/Timekeeping Software.	
	FIVE-YEAR FACILITY PLAN/NEW GROWTH	\$90.75 MILLION
	New facilities to support continued student growth in the south/east portion of the school district: <ul style="list-style-type: none">▶ A new elementary school to alleviate overcrowding at Pine Ridge, Coyote Hills, and Black Forest Hills.▶ A new middle school to alleviate overcrowding at Fox Ridge.▶ Major renovations include: A new special education Transition Center, a new gym at Cherry Creek Academy, Stutler Bowl track and turf replacement, Belleview Elementary/Campus Middle/Cherry Creek High traffic redesign, Horizon breezeway, and identified cafeterias.	
	SAFETY & SECURITY	\$1.88 MILLION
	The safety and security of our students and staff is our number one priority. <ul style="list-style-type: none">▶ Communication – radio system upgrades, uniform dispatch center, CARE Line upgrades (texting app).▶ Physical Safety – Additions to the surveillance system, police Knox boxes, key cards, laminate glass.	
	MAINTAINING COMMUNITY INVESTMENT	\$79.67 MILLION
	The community has made a significant investment in the Cherry Creek School District. Major maintenance, however, has been deferred for years due to significant reductions in funding from the state. It is critical that the physical plant, where students attend school, is maintained for current and future generations. <ul style="list-style-type: none">▶ Significant investment in the physical plant includes: Asphalt/Concrete, Doors/Hardware/Keying, Glazing, Carpet/Floors, Mechanical/Electrical/Plumbing, Fire Protection, Roofing, Playground, Tennis Courts/Tracks, Utility/Specialty Infrastructure.	

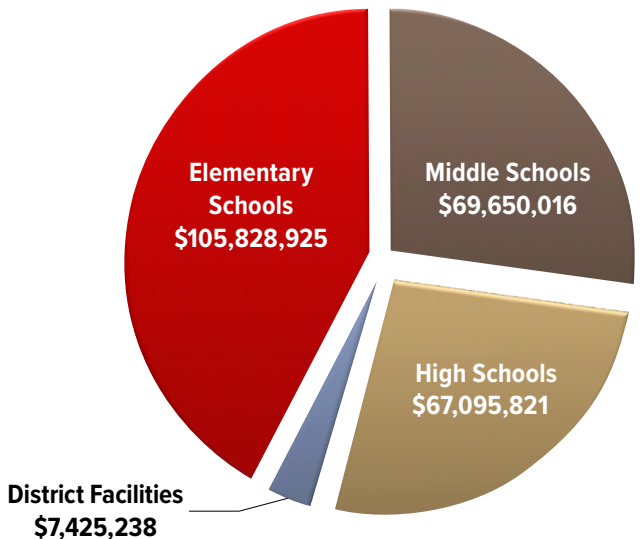




INVESTING IN EXCELLENCE

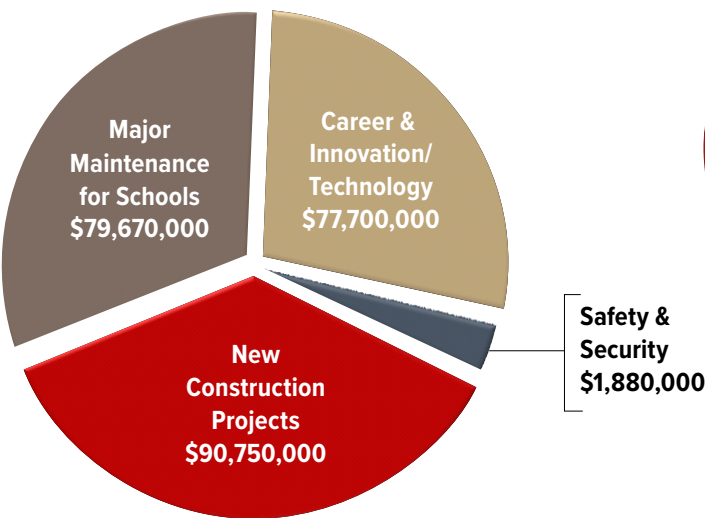
CCSD 2016 Bond Breakdown

WHERE the money will be spent:



The money will be spent
IN SCHOOLS – ON STUDENTS.

HOW the money will be spent:



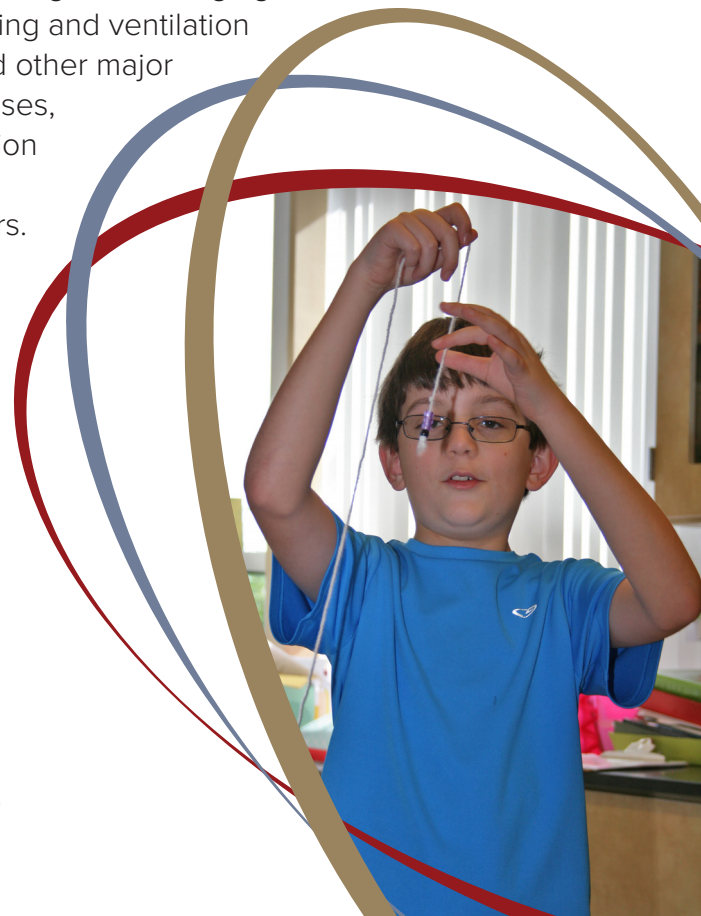


WHAT IS A BUDGET (MILL LEVY OVERRIDE) ELECTION?

- ▶ Local overrides are available to provide additional revenue for CCSD initiatives and operational expenses. This funding is in addition to the school funding formula determined by the State of Colorado.
- ▶ Types of expenditures would include personnel costs to maintain class size; curriculum and instructional supplies; computers and technology; and other expenses related to Cherry Creek's commitment to academic excellence and the highest quality educational programs.
- ▶ Requires approval by Cherry Creek voters.
- ▶ Funded through personal and business property taxes.
- ▶ Colorado State statute limits local overrides to 25% of Cherry Creek's total program.

WHAT IS A BOND ELECTION?

- ▶ A Bond Election is to approve Cherry Creek's issuance of general obligation bonds to fund capital needs.
- ▶ Capital needs are generally defined as assets that have a useful life over one year. Types of expenditures include building new schools; equipping and furnishing new schools; repairing, renovating, improving, and enlarging existing facilities including updating heating and ventilation systems, roofs, wiring, and plumbing; and other major costs including larger technology purchases, safety and security systems, and innovation projects.
- ▶ Requires approval by Cherry Creek voters.
- ▶ Funded through personal and business property taxes.
- ▶ The Cherry Creek School District has a strong credit rating and is able to issue tax-exempt general obligation bonds at a very low interest rate.





CHERRY CREEK SCHOOL DISTRICT BOND RATINGS

Assigned by Agencies (November 2015)



- ▶ Moody's – Aa1 General Obligation Bond Rating.
Obligations rated Aa1 are judged to be of high quality and are subject to very low credit risk. “The Aa1 rating reflects Cherry Creek’s diverse economy and favorable location within the Denver MSA, large tax base that is experiencing growth, and its affluent and supportive district residents. The Cherry Creek School District continues to maintain healthy reserve levels, although this level is dependent upon the passage of mill levy overrides to supplement state funding. The Aa1 rating also incorporates Cherry Creek’s manageable debt profile and elevated pension burden associated with the statewide pension plan, solid financial management, and liquidity.”
- ▶ Standard & Poor’s – AA General Obligation Bond Rating.
“Debt rated AA has a very strong capacity to meet its financial commitments and differs from the highest rated issues only in small degree.”

WHY A BUDGET (MILL LEVY) ELECTION IS RECOMMENDED

- ▶ The State of Colorado, through the use of the Negative Factor, is underfunding the Cherry Creek School District by \$50 million annually.
- ▶ To maintain class size consistent with educational programs.
- ▶ To recruit and retain a quality teaching staff for students.
- ▶ To provide new instructional materials and support to implement Colorado Academic Standards.
- ▶ To prepare students for “College and Career Post-secondary Success.”
- ▶ To provide instructional innovation with computers and other technology.
- ▶ To provide safe transportation for students to and from school.

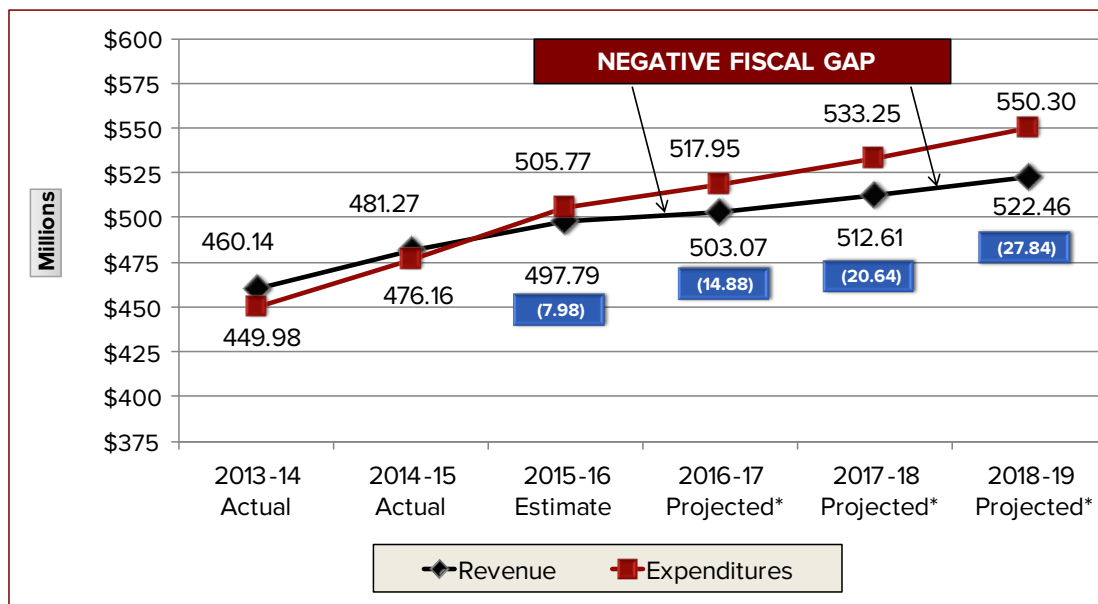
BUDGET DEVELOPMENT



PROJECTED REVENUE & EXPENDITURES

*FIGURES ARE CALCULATED WITH NO NEW REVENUE BASED ON SCHOOL FINANCE FUNDING FY2016-17 STATE FUNDING ESTIMATES.

FY2016-17 through FY2018-19*



"As a realtor for 40 years, I can tell you that the quality of education is the number-one driver of home value."

EDIE MARKS,
REALTOR

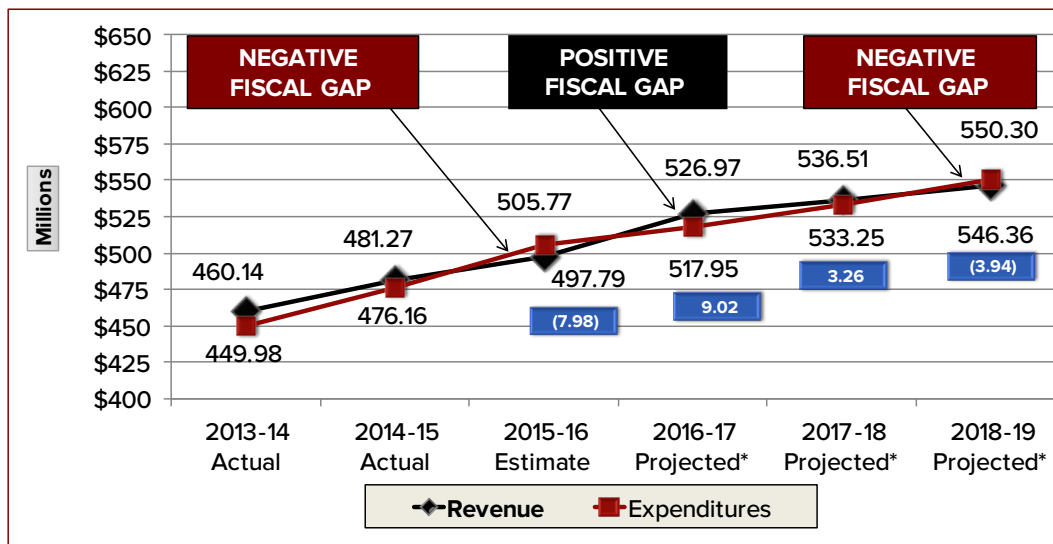


2021
CHERRY CREEK

PROJECTED REVENUE & EXPENDITURES

*FIGURES BASED ON A SUCCESSFUL NOVEMBER 2016 ELECTION WITH A \$23.9 MILLION OVERRIDE AND USING FY2016-17 STATE FUNDING ESTIMATES.

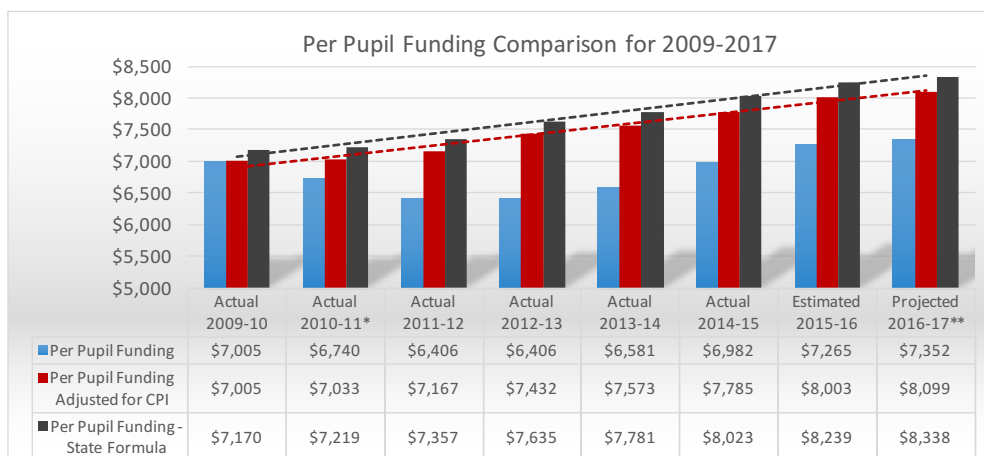
FY2016-17 through FY2018-19*



Excludes Required Operating Costs for New Facilities

PROJECTED PER PUPIL FUNDING

For Cherry Creek School District – FY2016-17



* Includes one-time Federal funding for EDJOBS of \$9.7 million and SF/ARRA of \$3.7 million, for a total of \$13.4 million.

** 2016-17 funding level from the School Finance formula based on the State estimate is approximately \$347 more per pupil, or 4.9% more than that of 2009-10, while the cumulative CPI over the last seven years has increased 13.7%; projection assumes School Finance funding increase for inflation and enrollment.



BUDGET DEVELOPMENT



CAREER AND INNOVATION



*“Creativity is thinking
up new things.
Innovation
is **DOING** new things.”*

*THEODORE LEVITT
PROFESSOR – HARVARD BUSINESS SCHOOL,
EDITOR – HARVARD BUSINESS REVIEW*



CAREER AND INNOVATION



2021
CHERRY CREEK



"With funds being aimed at improvements in both longstanding and newly planned schools across the district, these innovation-focused investments will have a long-term positive effect on property and home values."

*MITCH BLACK
PRINCIPAL WITH NORRIS DESIGN,
PARENT AND MEMBER OF LRFPC*



CAREER AND INNOVATION



2021
CHERRY CREEK



What Does **COLLEGE & CAREER PREPAREDNESS & SUCCESS**

Over the past 16 months, the Cherry Creek School District has engaged community stakeholders in the process of updating graduation requirements effective for the class of 2021. The process has also included aligning and developing internal systems to ensure that all students are prepared to be successful in their future. The following pages outline what our community desires for their children and represents the next iteration of excellence for Cherry Creek students.

Look Like in...
2021 *and beyond?*





When we asked...

CCSD Stakeholders How Their

➤ **CHILDREN**

➤ **FUTURE EMPLOYEES**

➤ **STUDENTS**

...needed to be prepared for the future

- Parents
- CCSD Graduates
- Counselors
- Community Members
- Teachers
- Librarians
- Local CEOs/Employers
- Local Colleges/Universities
- Administrators

**From all stakeholders...
the necessary
focus of education
was clear and
consistent!**

- Critical Thinking Skills
- Real World Experiences
- Problem Solving
- Curiosity/Inquiry
- Personalization
- Flexibility/Adaptability
- Relevancy
- Working in Teams
- Communication Skills
- Project-based Learning

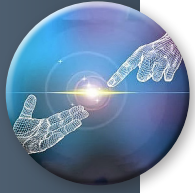


INNOVATION
College and Career Readiness

CAREER AND INNOVATION



2021
CHERRY CREEK



Building A New Way Of Thinking



The Next Iteration of Excellence

- Our parents are asking for...
- We know graduates will need...
- Employers are looking for...
- Future success will depend upon!

A focus on innovative teaching, thinking, and learning in a systemic manner for all students every day requires:

- Strategic teacher professional development.
- The construction of purposeful space within the current school structure.



► **STUDENT-CENTERED**
► **INTERACTIVE**

► **ADAPTABLE**
► **HANDS-ON**
► **TRANSPARENT**



Within specialized learning spaces, teachers and students can combine critical thinking skills, technology, and a STEM focus to accomplish 21st-century learning. Instructional strategies that will prepare students for success in 2021 and beyond are different than they are today and require a new approach.



CAREER AND INNOVATION



Innovation at Elementary Schools and Middle Schools

Recommendation for Cherry Creek Schools

With the support of an architectural firm, each elementary and middle school would be charged with collaboratively developing an approach to the systemic implementation of 21st-century teaching and learning. Parents, community members, students, teachers, and administrators at each site would plan the approach and space that best meets their needs.

1. PROFESSIONAL DEVELOPMENT FOR TEACHERS
2. DESIGNING SPACE TO SUPPORT FUNCTION
 - a. Elementary Schools (\$500,000 each)
 - b. Middle Schools (\$750,000 each)



2021

CHERRY CREEK



Project-Based Learning Working in Teams

“If you look at history,
innovation doesn’t
come from just giving
people incentives; it
comes from **CREATING
ENVIRONMENTS**
where their **IDEAS CAN
CONNECT**”

Steven Johnson,
Science Author and
Media Theorist



Critical Thinking Skills



CAREER AND INNOVATION



College & Career Preparation Looks Different... IN 2021

Recommendation for Cherry Creek Schools

Construct and equip a career and innovation academy to increase the pathways for students to complete high school graduation requirements and be prepared for careers. A standalone, central facility available to all Cherry Creek 11th and 12th grade students to ensure preparation for college and career in the 21st-century.

**College
and Career
Preparedness
\$40,000,000**



Colorado Workforce
Development Council

This recommendation is in alignment with the work of the Colorado Office of Economic Development and International Trade and the Colorado Workforce Development Council.

14 KEY INDUSTRIES THAT DRIVE THE COLORADO ECONOMY:

- ▶ Advanced Manufacturing
- ▶ Aerospace
- ▶ Bioscience
- ▶ Creative Industries
- ▶ Defense & Homeland Security
- ▶ Electronics
- ▶ Energy & Natural Resources
- ▶ Engineering & Construction
- ▶ Food & Agriculture
- ▶ Financial & Business Services
- ▶ Health & Wellness
- ▶ Technology & Information
- ▶ Tourism & Outdoor Recreation
- ▶ Transportation & Logistics



2021

CHERRY CREEK



Real-World Experiences

A3 + E
Aerospace Aviation Auto + Energy

Cherry Creek School District | Career Innovation Academy

WHAT? HIGH SCHOOL CAREER & INNOVATION ACADEMY

PROGRESSION OF INNOVATION GALLERY SPACE

1. Student gathering and welcoming activities
2. Community, industry, student presentation space
3. Project focus gallery and gathering space
4. Shared machine and technology Lab

Relevancy



CAREER AND INNOVATION



TECHNOLOGY

The Cherry Creek School District is committed to integrating technology into relevant and meaningful classroom experiences designed to prepare students for future success. This commitment is seen in the continued increased demand for technology from our students, teachers, and staff each year. It is anticipated that many of our technology components will not be able to handle the increase in demand over the next five years. In addition, technology ages rapidly and needs to be replaced on a regular basis. Therefore, we are recommending the following district technology resources be upgraded or refreshed.





Information Systems/Technology Upgrades

Central Technology Services Refresh

Wireless Network, Web Filtering & Firewall System **\$1,450,000**

Replace or enhance the web filtering system and subscription to accommodate additional device count, network bandwidth, out-of-network filtering, and other enhanced filtering capabilities.

Providing safe and adequate filtering is required by policy and by the Federal Children's Internet Protection Act (CIPA).

District Data Center Systems **\$1,850,000**

Due to increased demand for central resources and the aging of current equipment, a general upgrade of various core components of our data center is needed. The upgrade will ensure core operations and services can be continually provided for staff and students, including programs such as PowerSchool, SharePoint (web sites), and email systems.

Classroom Projection Refresh **\$3,900,000**

Many of Cherry Creek's classroom projectors were replaced in the 2008 Bond, however many projectors are much older. By 2017, most classroom projectors will be more than ten years old. A classroom projection refresh will allow teachers to utilize projection technology to teach innovatively in their classrooms.

Technology Asset Management Software **\$400,000**

The Cherry Creek School District handles tens of thousands of technology assets such as computers, Chromebooks, printers, router servers, and IP phones. Asset management software would provide a clearer picture of Cherry Creek's technology inventory, where it is, and to whom it is assigned.

Timekeeping Software **\$600,000**

The Cherry Creek School District currently handles the majority of its timekeeping via handwritten time cards. This process is labor intensive, prone to human error, extremely difficult to manage, and costly. Cherry Creek needs an automated, electronic timekeeping system to significantly reduce these problems and to meet the requirements of the Affordable Care Act.

Total **\$8,200,000**

TECHNOLOGY





LONG-RANGE FACILITY PLANNING COMMITTEE

The mission of the Long-Range Facility Planning Committee (LRFPC), an advisory committee to the Board of Education, is to promote “Excellence in Education” by recommending cost-effective plans for the use of capital facilities. Toward this end, the committee evaluates issues such as new construction, renovation of existing facilities, attendance boundaries, and 4-track calendar issues from a K-12 facilities perspective, while honoring diversity among facilities and populations within the District. (Policy BDF R-5)

Community Members

DIRECTOR DISTRICT A

Richard Frank – Community Member, Residential Developer

Marcela Duran – Parent, Water Resources Planner, Attorney

DIRECTOR DISTRICT B

Matt Batcho – Parent, Regional Program Director

Andrew Light – Parent, Realtor

DIRECTOR DISTRICT C

Valerie Bromley – Parent, Attorney

Bill Van Patten – Community Member, Retired Engineer

DIRECTOR DISTRICT D

Matt Snider – Community Member, Retired Software Engineer

Ben Startzer - Parent, Business Development Manager

DIRECTOR DISTRICT E

Mark Cutright – Community Member, Petroleum Engineer

Benjamin Petre – Parent, Attorney

AT-LARGE REPRESENTATIVES

Jay Campbell – Parent, Facilities Director

Leslie Franklin – Parent, Marketing/Communications Consultant

Tom Gross – Parent, Realtor

Kevin Stadler – Parent, Director of Audits

Rob Stieg – Community Member, Facilities Planning & Design Director

Colorado Homebuilders Association

Mitch Black – Parent, Residential Developer



2021

CHERRY CREEK



District Representatives

Karen Fisher – Board of Education

Dr. Harry Bull – Superintendent

Sheila L. Graham – Assistant Superintendent*

Angela McCain – Director, Planning**

David Strohfus – Director, Planning**

Guy Bellville – Chief Financial Officer

Jason Koenig – Chief Information Officer

Chris Smith – Executive Director, Levels

Dr. Tera Helmon – Executive Director, Levels

Dr. Tony Poole – Executive Director, Student Achievement Services

Dr. Richard Charles – Director, STEM Education

Beth Wallace – Director, Food & Nutrition Services

Michael Hush – Director, Transportation

Larry Bull – Director, Athletics & Activities

Randy Councill – Director, Safety & Security

Paul DeRose – Manager of Mechanical Electrical and Plumbing

Gwen Hansen-Vigil – High School Principal

Marquetta Thomas – Middle School Principal

Carla Stearns – Middle School Principal

Chris Hardy – Elementary School Principal

Mike Wurdeman – Elementary School Principal

Rob McLelland – High School Assistant Principal

Carol Earle – Executive Assistant

*Committee Chair

**LRFPC Facilitators



The LRFPC worked in subcommittees to develop the Five-Year Facility Plan. In February, 2016, the LRFPC voted to finalize their formal recommendations to the Superintendent and the CCSD Board of Education.

FIVE-YEAR FACILITY PLAN



Timeline Development

The Long-Range Facility Planning Committee engaged in an in-depth, 18-month process to develop the current Five-Year Facility Needs Plan. The timeline below briefly outlines this process:

October, 2014	Review October Enrollment Data, Facilities vs. Capacity, Boundaries, Current and Future Bond Updates.
November, 2014	Review State/Local Demographic Information and Transfer/Choice Data.
January, 2015	Calendar Discussion, Technology and Upcoming Facility Summer Work Updates/Overview, Enrollment Information.
February, 2015	Calendar and Boundary Discussions, Creation of Boundary Subcommittee.
March, 2015	Feeder Systems/Boundaries/Enrollment (Continued Discussion).
April, 2015	School Financing Update, Bond Discussion, Formation of Innovation and Renovation Subcommittees.
May, 2015	Subcommittee Reports.
June-August, 2015	Subcommittee Work Continues
September, 2015	Subcommittee Reports, Boundary Subcommittee revised to New Construction Subcommittee.
October, 2015	Report on Negative Factor and State School Financing, Review of Maintenance Needs, Calendar Discussion.
November, 2015	Four-Track Calendar Discussion Based on Program vs. Enrollment Needs.
December, 2015	Innovation, Surplus Property Discussions, Update on Independent Architectural Evaluation of Buildings.
January, 2016	Status Report to the Board of Education, Vision 2021 Presentation.
February, 2016	Finalize Budget, Bond, and Innovation planning document.
March, 2016	Formal Presentation of the Budget, Bond, and Innovation planning document to the CCSD Board of Education.
April, 2016	The CCSD Board of Education approved proposed Bond and Budget Election.





Unanimous Support

The Long-Range Facility Planning Committee unanimously supports the recommendations to the Board of Education regarding construction projects and facility improvements as outlined in this document. The CCSD Board of Education unanimously voted to support a Bond and Budget election at the April 11, 2016 Board Meeting. This election will take place in November, 2016.



"We need to make sure our kids have what they need now to succeed and be the best they can with whatever they do. Every child, every day, whatever it takes."

MATT BATCHO,
MEMBER LONG-RANGE FACILITY
PLANNING COMMITTEE

FIVE-YEAR FACILITY PLAN



Five-Year Facility Needs Planning

The Long-Range Facilities Planning Committee (LRFPC) formed the New Construction & Boundaries Subcommittee in order to outline our new facility needs to accommodate anticipated growth through the 2020-21 school year. This group analyzed historical enrollment changes, current building capacities, and attendance boundaries to make recommendations for fiscally responsible enrollment management solutions. This group evaluated information provided by MetroStudy and local residential developers to consider all options that will equip CCSD to effectively accommodate anticipated growth due to new home construction through the next five years.

Enrollment projections are created utilizing a cohort survival ratio analysis to develop projections of future enrollment. This analysis utilizes the most recent five years of historical data to develop ratios that reflect the actual grade-by-grade change. The LRFPC also employed the national planning and development organization MetroStudy to assist in the development of projected residential growth.



MetroStudy provides unparalleled insight to empower strategic decisions, intelligently deploy investment capital, improve risk management, and develop targeted leads to increase sales. Builders, developers, financial institutions, manufacturers, retailers, telecommunications providers, government entities, and numerous, adjacent industries rely on MetroStudy's research, expertise, and intelligence to support strategic business decisions at the local, regional, and national market level. MetroStudy is considered the definitive authority on the residential construction real estate and housing market.

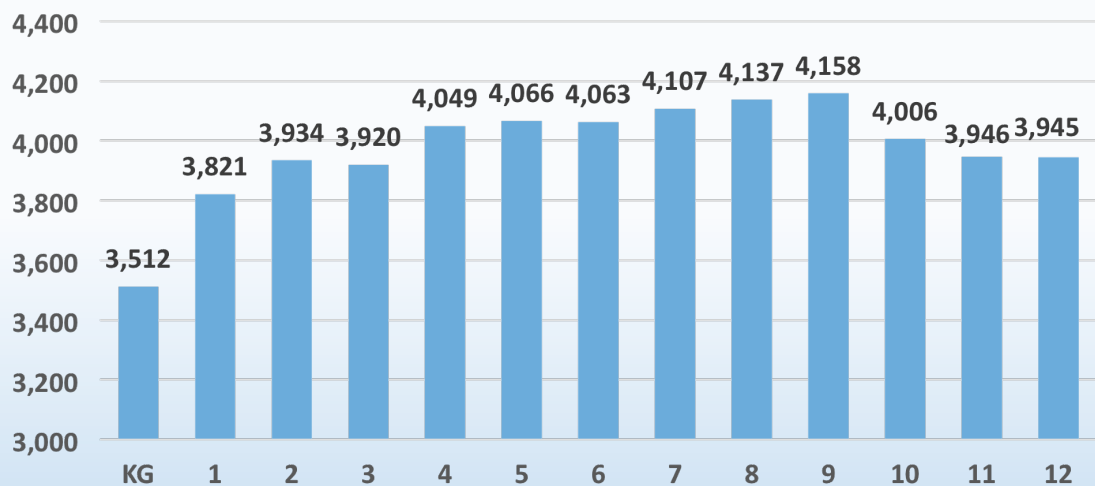


2021

CHERRY CREEK

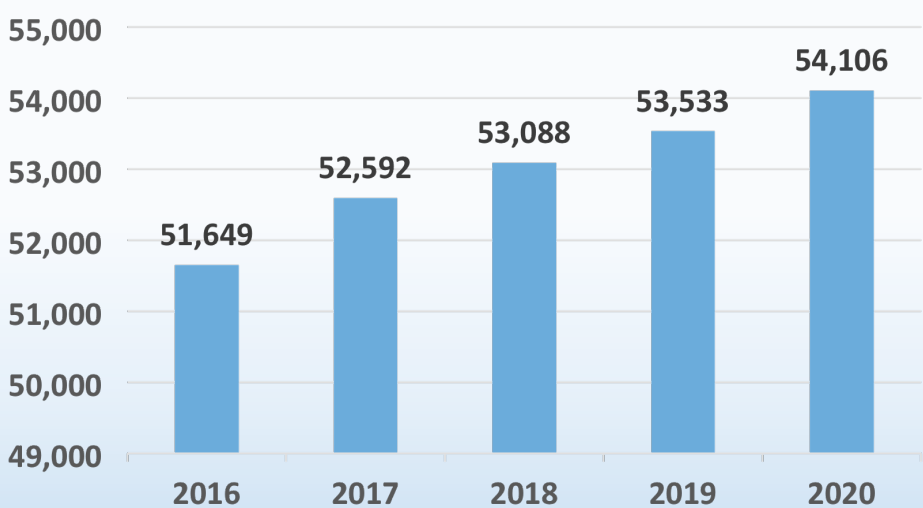


CCSD K-12 Enrollment By Grade - October, 2015



Enrollment data does not include CCSD Special Programs

CCSD Projected Enrollment K-12 Facilities 2016-2020



Enrollment data does not include CCSD Special Programs

FIVE-YEAR FACILITY PLAN



Cherokee Trail High School

CTHS Feeder Schools

Fox Ridge Middle School

Black Forest Hills Elementary
Buffalo Trail Elementary
Coyote Hills Elementary
Pine Ridge Elementary

Liberty Middle School

Creekside Elementary

Sky Vista Middle School

Dakota Valley Elementary

Thunder Ridge Middle School

Canyon Creek Elementary



Recommendation:

The LRFPC recommends the construction of a new elementary school to provide enrollment relief for Pine Ridge, Black Forest Hills, and Coyote Hills Elementary Schools.

The LRFPC recommends the construction of a new middle school to provide enrollment relief for Fox Ridge Middle School.

The LRFPC recommends not building a new high school at this time, resulting in savings of approximately \$150,000,000.



Cherry Creek High School

CCHS Feeder Schools

Campus Middle School

Bellevue Elementary
Cottonwood Creek Elementary
Dry Creek Elementary
Heritage Elementary
High Plains Elementary
Walnut Hills Community Elementary
Willow Creek Elementary

West Middle School

Cherry Hills Village Elementary
Dry Creek Elementary
Greenwood Elementary
Heritage Elementary
Holly Ridge/Holly Hills Elementary
Homestead Elementary
Willow Creek Elementary



- ▶ Overall stable enrollment across all levels through 2020.
- ▶ Limited new home construction.
- ▶ Continued acceptance of School of Choice and Non-Resident applications in select schools will maintain stable enrollment.

Recommendation:
No additional facility needs to manage enrollment.



Eaglecrest High School

EHS Feeder Schools

Horizon Community Middle School

Arrowhead Elementary
Summit Elementary
Sunrise Elementary

Sky Vista Middle School

Aspen Crossing Elementary
Mountain Vista Elementary

Thunder Ridge Middle School

Antelope Ridge Elementary
Peakview Elementary
Timberline Elementary



- Moderate enrollment growth projected at Eaglecrest, Sky Vista, and Mountain Vista through 2020.
- Continued buildout of the Copperleaf development.
- Maturing neighborhoods begin to decline in enrollment.

Recommendation:

No additional facility needs to manage enrollment.





Endeavor Academy

The mission at Endeavor Academy is to prepare students for post-secondary transitions by re-engaging them in the learning process using traditional and non-traditional instruction in an academically rigorous and personalized learning environment. Endeavor Academy takes great pride in serving the Cherry Creek School District as an alternative high school designed to meet the needs of students at risk of not completing high school. Last spring Endeavor Academy was approved by the Board of Education as the seventh high school in Cherry Creek. Endeavor Academy formally applied to the Colorado Department of Education for a special designation as an Alternative Education Campus. This designation squarely places instructional focus on research-based strategies and interventions designed specifically for students who have not succeeded in a traditional learning environment. Endeavor Academy accommodates approximately 300 high school students from all feeder areas in CCSD. Endeavor Academy celebrated its first graduating class in December, 2015. Prior to this year, Endeavor Academy students graduated as members of their home high schools.



Recommendation:
No additional facility needs
due to enrollment at this
time.



Grandview High School

GHS Feeder Schools

Falcon Creek Middle School

Meadow Point Elementary
Rolling Hills Elementary
Trails West Elementary

Liberty Middle School

Creekside Elementary
Fox Hollow Elementary
Red Hawk Ridge Elementary



- ▶ Slow enrollment growth projected at GHS through 2020.
- ▶ Kings Point development anticipates breaking ground in 2019, causing an increase in enrollment.
- ▶ Significant tracts of land exist with mixed-use and residential zoning.
- ▶ Mature neighborhoods continue to decline in enrollment.

Recommendation:

No additional facility needs due to enrollment at this time.





Overland High School

OHS Feeder Schools

Prairie Middle School

Eastridge Community
Elementary

Highline Community
Elementary

Holly Ridge/Holly Hills
Elementary

Polton Community
Elementary

Ponderosa Elementary

Village East Community
Elementary



- ▶ Slow enrollment growth projected at OHS and PMS through 2020.
- ▶ Limited land available for new home construction.
- ▶ Monitor elementary enrollment and choice trends.

Recommendation:

No additional facility needs to manage enrollment.



Smoky Hill High School

SHHS Feeder Schools

Horizon Community Middle School

Cimarron Elementary
Summit Elementary

Laredo Middle School

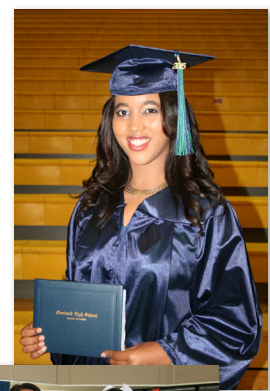
Independence Elementary
Indian Ridge Elementary
Mission Viejo Elementary
Sagebrush Elementary



- ▶ Stable enrollment across all levels through 2020.
- ▶ No new home construction in this area.

Recommendation:

No additional facility needs to manage enrollment.



FIVE-YEAR FACILITY PLAN



HIGH GROWTH AREA EAST OF E-470

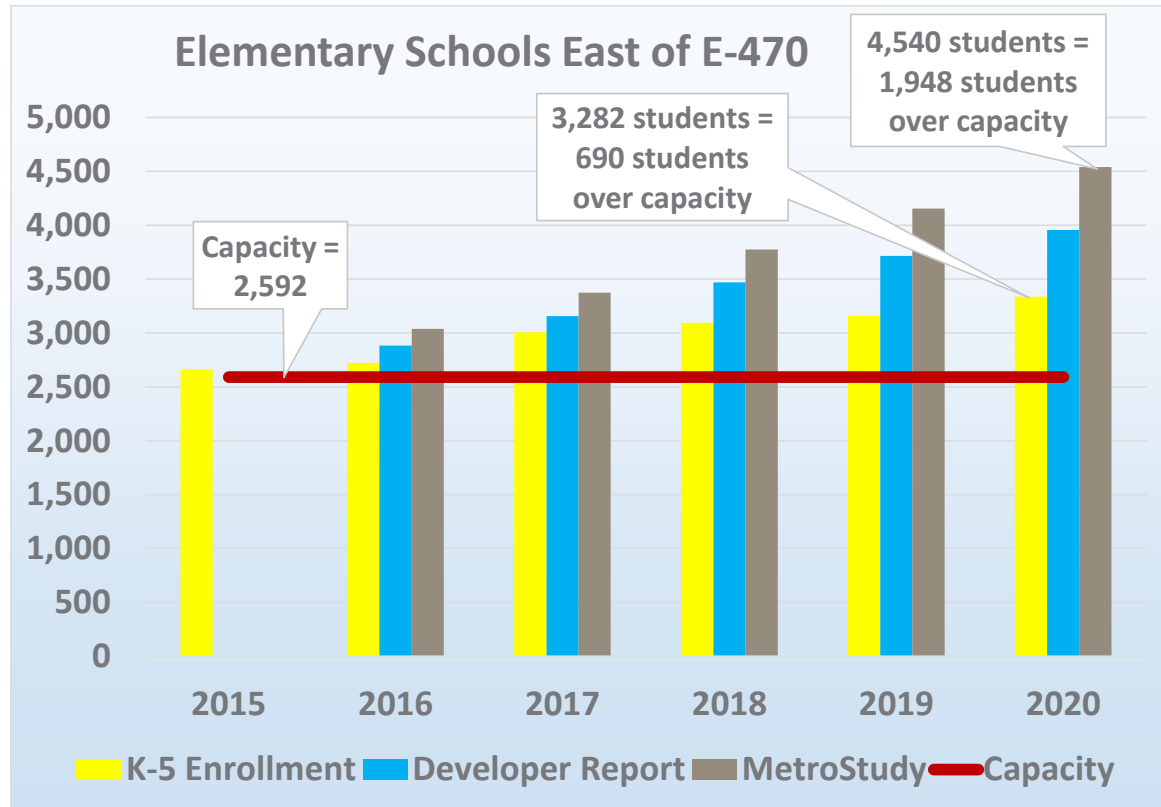
Elementary Schools

Projected Enrollment 2016-20

Black Forest Hills, Buffalo Trail, Coyote Hills, Pine Ridge

CCSD developed three different enrollment projection models in order to effectively plan for continued growth in the eastern portion of Cherry Creek. The following chart represents three different models developed with input from outside partners. Below you will see a collective enrollment projection for elementary students in the four elementary schools east of E-470.

- Official CCSD Planning Office projections are shown by the yellow bars.
- Projections developed with local residential developers are shown by the blue bars.
- Projections developed utilizing housing forecasts from MetroStudy are shown by the tan bars.





Enrollment Findings for Elementary Schools East of E-470



- ▶ All four schools are near or exceeding traditional calendar capacity.
- ▶ Significant new home construction is under way and will continue well beyond 2020.
- ▶ Two neighborhoods from Pine Ridge (over 200 students) are overflowed to Black Forest Hills and Coyote Hills. Construction of a new elementary school will allow CCSD to end overflow enrollment and allow for future growth at Black Forest Hills and Coyote Hills.
- ▶ New neighborhoods are under construction in the Pine Ridge, Black Forest Hills, and Coyote Hills attendance areas.
- ▶ Enrollment will remain near capacity at both Coyote Hills and Buffalo Trail.
- ▶ Conservative CCSD enrollment projections show Cherry Creek growing by enough students to fill at least one additional elementary school by 2019.
- ▶ Aggressive MetroStudy estimates suggest the need for the construction of two to three additional elementary schools in the future, as enrollment may increase to 1,900+ students by 2020.
- ▶ Significant growth will continue beyond 2020.

Recommendation:

The LRFPC recommends the construction of a new elementary school to provide enrollment relief for Pine Ridge in the new Five-Year Facility Plan.



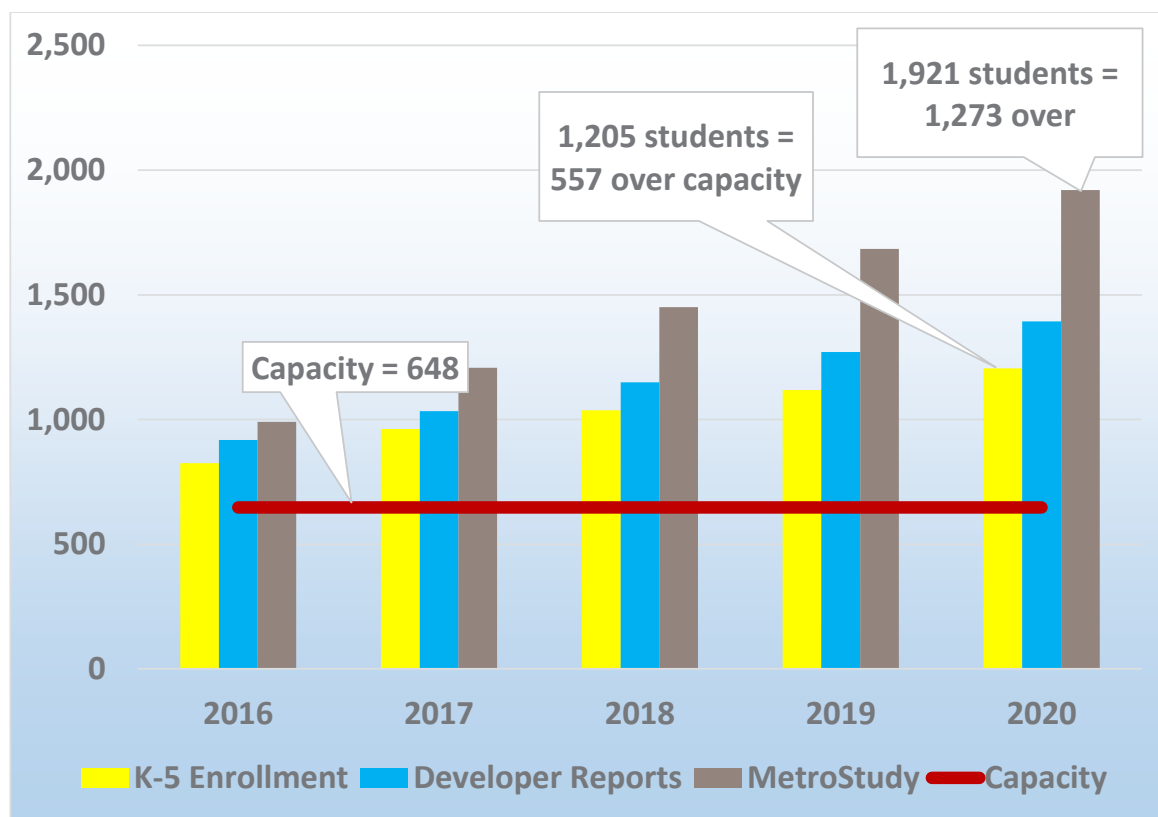


Pine Ridge Elementary School

Projected Enrollment 2016-20

CCSD developed three different enrollment projection models in order to effectively plan for continued growth in the eastern portion of Cherry Creek. The following chart represents three different models developed with input from outside partners.

- Official CCSD Planning Office projections are shown by the yellow bars.
- Projections developed with local residential developers are shown by the blue bars.
- Projections developed utilizing housing forecasts from MetroStudy are shown by the tan bars.



Recommendation:

The LRFPC recommends the construction of a new elementary school to provide enrollment relief for Pine Ridge.



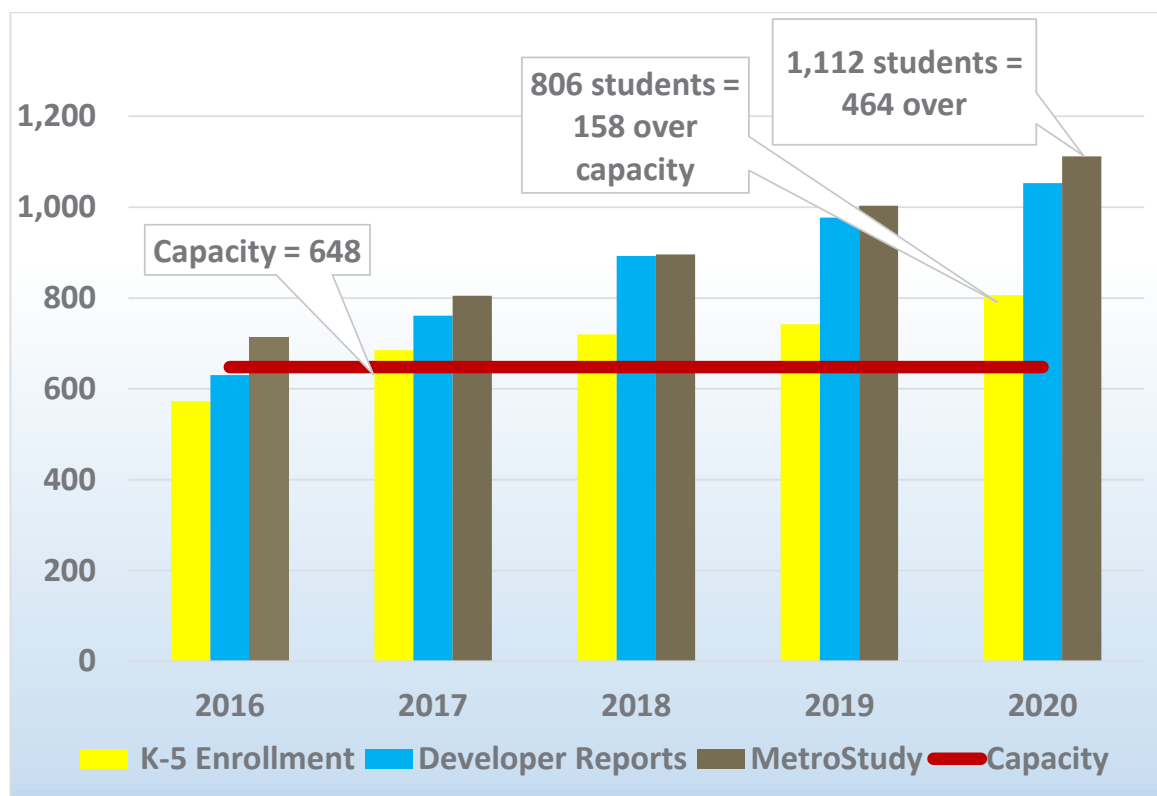


Black Forest Hills Elementary School

Projected Enrollment 2016-20

CCSD developed three different enrollment projection models in order to effectively plan for continued growth in the eastern portion of Cherry Creek. The following chart represents three different models developed with input from outside partners.

- Official CCSD Planning Office projections are shown by the yellow bars.
- Projections developed with local residential developers are shown by the blue bars.
- Projections developed utilizing housing forecasts from MetroStudy are shown by the tan bars.



Recommendation:

The LRFPC recommends the construction of a new elementary school to provide enrollment relief for Black Forest Hills by ending overflow enrollment from Pine Ridge.

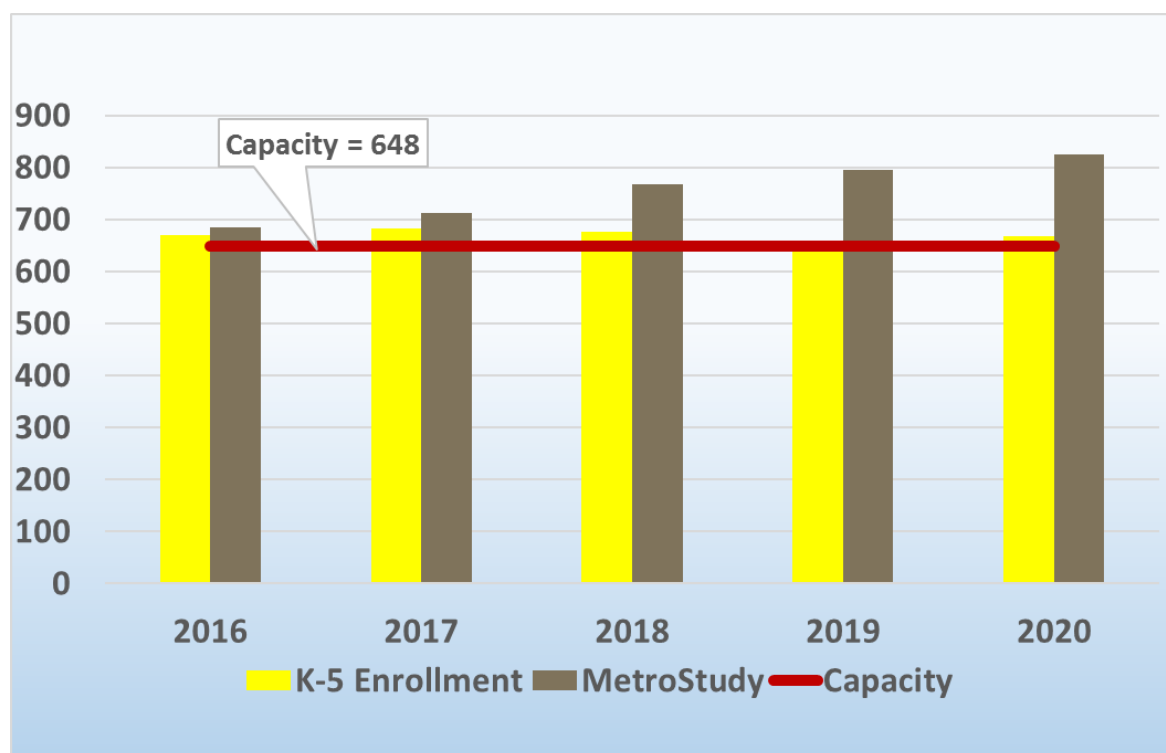


Buffalo Trail Elementary School

Projected Enrollment 2016-20

CCSD developed two different enrollment projection models in order to effectively plan for continued growth in the eastern portion of Cherry Creek. The following chart represents two different models developed with input from outside partners.

- Official CCSD Planning Office projections are shown by the yellow bars.
- Projections developed utilizing housing forecasts from MetroStudy are shown by the tan bars.



Recommendation:

The LRFPC recommends that there are no additional facility needs to manage enrollment at Buffalo Trail at this time, as Buffalo Trail will remain at or near capacity through 2020.



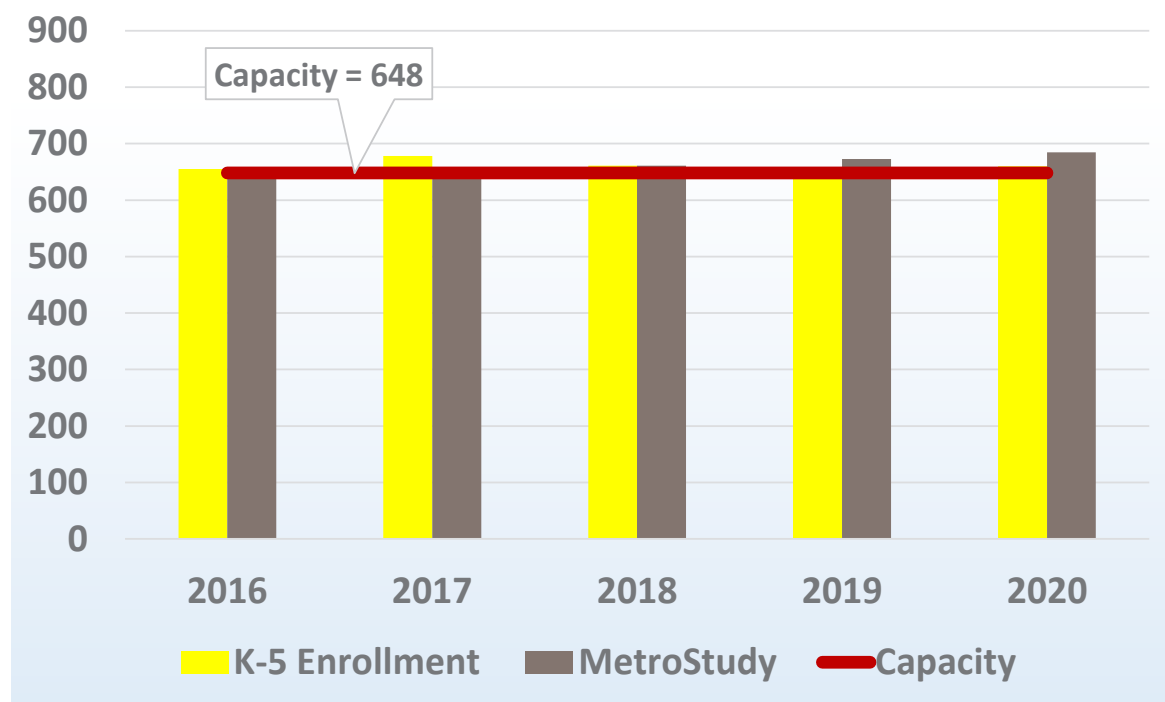


Coyote Hills Elementary School

Projected Enrollment 2016-20

CCSD developed two different enrollment projection models in order to effectively plan for continued growth in the eastern portion of Cherry Creek. The following chart represents two different models developed with input from outside partners.

- Official CCSD Planning Office projections are shown by the yellow bars.
- Projections developed utilizing housing forecasts from MetroStudy are shown by the tan bars.



Recommendation:

The LRFPC recommends the construction of a new elementary school to provide enrollment relief for Coyote Hills by ending overflow enrollment from Pine Ridge.



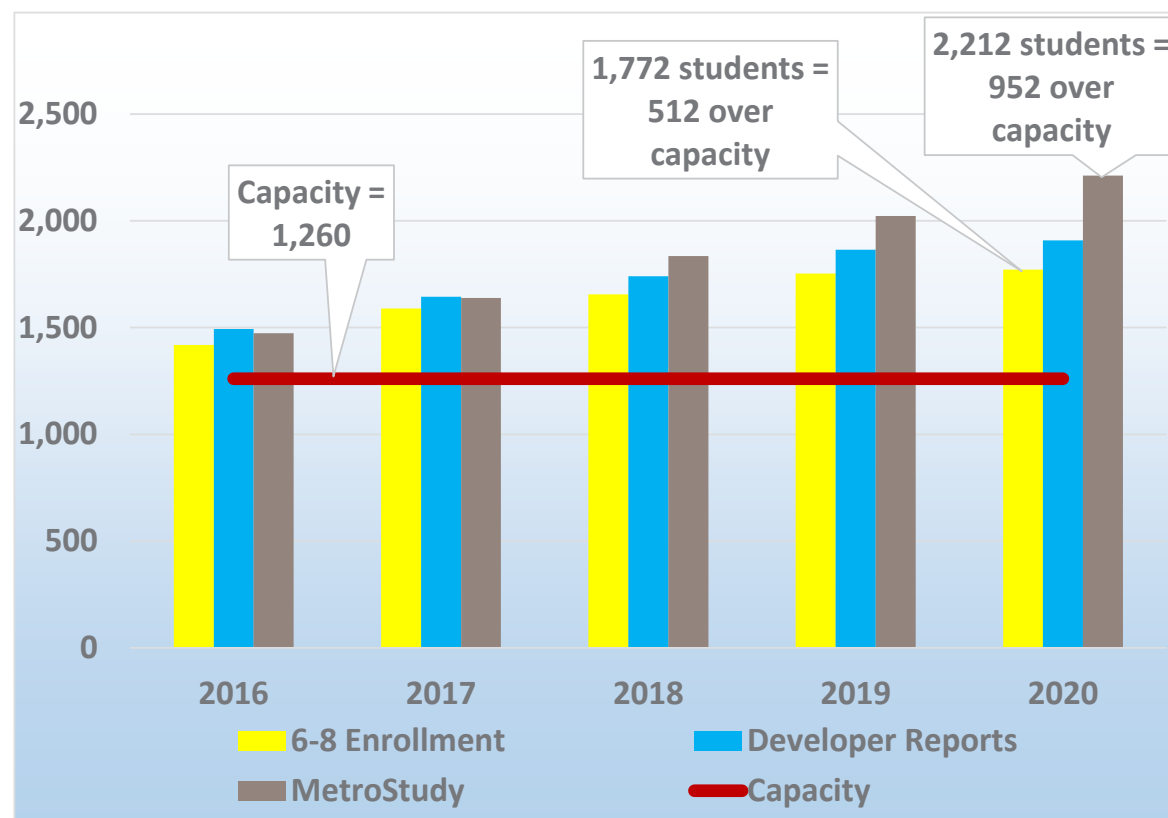
HIGH GROWTH AREA EAST OF E-470

Fox Ridge Middle School

Projected Enrollment 2016-20

CCSD developed three different enrollment projection models in order to effectively plan for continued growth in the eastern portion of the Cherry Creek. The following chart represents three different models developed with input from outside partners.

- Official CCSD Planning Office projections are shown by the yellow bars.
- Projections developed with local residential developers are shown by the blue bars.
- Projections developed utilizing housing forecasts from MetroStudy are shown by the tan bars.





Enrollment Findings for Fox Ridge

- ▶ Fox Ridge is our fastest growing middle school with enrollment currently projected at 1,419 students in 2016.
- ▶ Enrollment exceeded building capacity in 2015.
- ▶ Conservative projections show growth to 500+ students beyond capacity in 2020.
- ▶ Significant growth will continue beyond 2020.
- ▶ Aggressive MetroStudy estimates result in nearly 1,000 students beyond capacity in 2020.

Recommendation:

The LRFPC recommends the construction of a new middle school to provide enrollment relief for Fox Ridge.





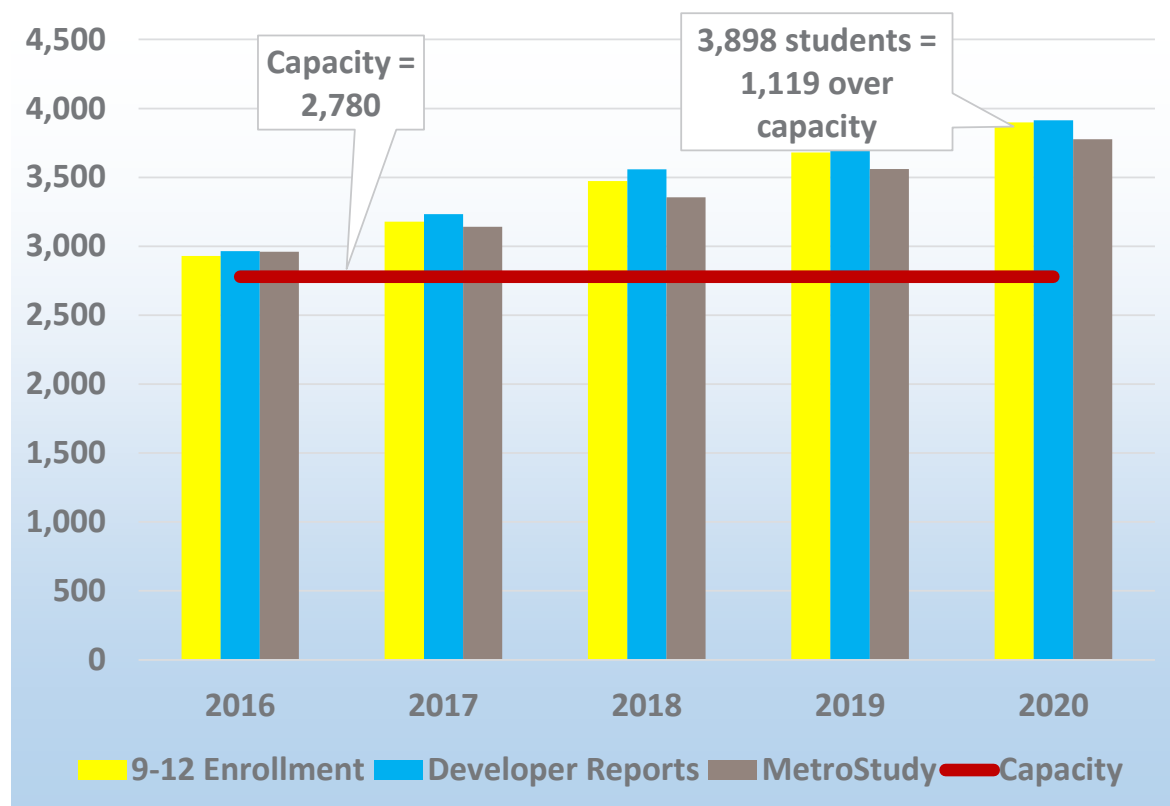
HIGH GROWTH AREA EAST OF E-470

Cherokee Trail High School

Projected Enrollment 2016-20

CCSD developed three different enrollment projection models in order to effectively plan for continued growth in the eastern portion of the Cherry Creek. The following chart represents three different models developed with input from outside partners.

- Official CCSD Planning Office projections are shown by the yellow bars.
- Projections developed with local residential developers are shown by the blue bars.
- Projections developed utilizing housing forecasts from MetroStudy are shown by the tan bars.





Enrollment Findings for Cherokee Trail

- ▶ Cherokee Trail is our fastest growing high school with enrollment currently projected at 2,930 students in 2016.
- ▶ Voter-approved addition (2012 Bond) increased building capacity to 2,780 students.
- ▶ Enrollment will grow to exceed building capacity in 2016.
- ▶ Significant growth will continue beyond 2020.
- ▶ Projections show growth to reach 1,100+ students over capacity in 2020.
- ▶ 1,100 students beyond capacity **is not enough** to build a new high school.
- ▶ Enrollment can be managed utilizing mobile classrooms, liberalized school of choice practices, and possible boundary adjustments.
- ▶ The LRFPC will consider the need for a new high school or another high school addition in a future bond.

Recommendation:

The LRFPC recommends not building a new high school at this time, resulting in savings of approximately \$150,000,000.



2021
CHERRY CREEK

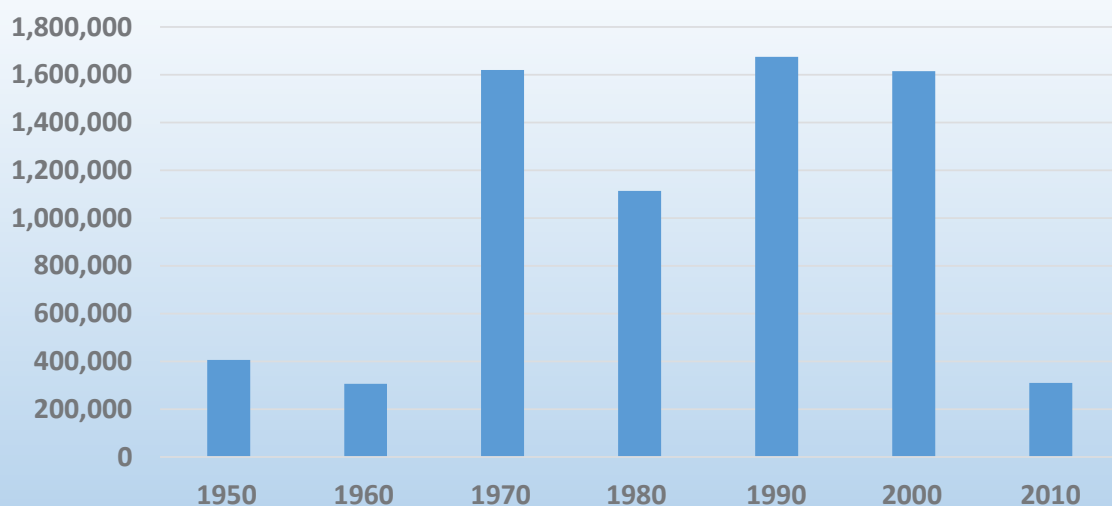


RENOVATIONS AND FACILITY UPGRADES

Recommendations for renovations and facility upgrades include architectural redesign; electrical, mechanical, and plumbing upgrades; infrastructure needs; and enhancement of the learning environment to better meet the needs of students and teachers.

The following pages provide detailed recommendations for projects associated with each facility in the Cherry Creek School District.

CCSD Construction by Decade
measured in square feet



GROWTH AND CONSTRUCTION

CCSD has continued to experience growth throughout its history. More than half of our buildings are over 25 years old. Just like individual homes, our schools require significant upkeep in order to maintain operations for students and staff.





Special Education – Transition Program

Our special education transition center is for young adults with special needs to learn life and independent living skills. It is currently housed in three mobile buildings on the Estate campus. These mobiles were last renovated in 2006, and the program is in need of a permanent location and upgraded facilities.

Space is available at Horizon Community Middle School but will require adjustments and renovations to identified classrooms to accommodate this program.

Cost: \$5,000,000



The Transition Program is an optional program for young adults with special needs who are 18 - 21 years old, have completed their high school core classes, and who have been referred by a specialized team that has determined the need for such transition services.

Transition is the process students and their families use to develop desired outcomes after high school. Transition assists with developing necessary tools to progress from high school to adult life.

Transition may look very different from individual to individual. Services are provided through a “team model” approach of educational professionals, the student, parents, and community resources.

Experiences and opportunities are offered to ensure that students will be able to attain individual goals and acquire the knowledge and skills needed to access appropriate community resources and agencies. Transition focuses on career and vocational development, adult life skills, accessing community resources/leisure activities, and interpersonal communication.



Cherry Creek Academy

For student safety and to facilitate learning, we recommend replacement of the existing gymnasium and lower level classrooms, along with funding for innovation. The CCA facility is a re-purposed church. The current gym was originally the chapel area and requires an upgrade to remain safe for students. The lower-level classrooms have been impacted by flooding and gymnasium noise.

Cost: \$5,500,000





Horizon Community Middle School

The existing breezeway between the east and west buildings was added in 1990 at the time of the construction of the building addition. It provided a viable connecting hallway between the new and old sections of the school. We are recommending enclosing the existing breezeway for increased weather protection, safety, and security.

Cost: \$250,000



FIVE-YEAR FACILITY PLAN



Transportation

Due to age, we recommend replacing the current electrical and HVAC systems at the Smoky Hill Central Transportation Terminal, as they are inefficient and do not function properly.

This structure was built in Cherry Creek at a time when fewer employees occupied the central transportation facility. For safety and efficiency, we recommend redesigning this building to accommodate the 180-200 employees that access the building each work day.

Cost: \$1,000,000

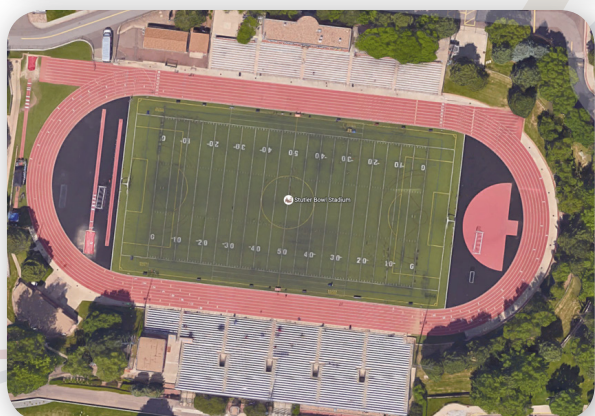




Stutler Bowl Track and Turf

Both the track and turf field at the Stutler Bowl have exceeded their life expectancies (as covered by warranty), and both will become safety issues for student use. Over 20,000 people across the Cherry Creek School District and in our community access the Stutler Bowl complex. We therefore recommend the replacement of the track and turf field at the stadium.

Cost: \$1,000,000



FIVE-YEAR FACILITY PLAN



Traffic Redesign

We are recommending a traffic redesign on the Belleview Elementary/ Campus Middle/Cherry Creek High campus to support safe access to the schools and to address congestion involved with 5,500 students, 500 staff members and the general public traffic on South Dayton Street. A redesign of current parking lots across the three campuses is needed to help alleviate congestion at peak student drop-off and pick-up times.

Cost: \$2,000,000





School Cafeterias

We recommend the renovation and updating of identified school cafeterias and kitchens to comply with code mandates in multiple settings, and to accommodate enrollment shifts at Eastridge Community and Village East Community elementary schools as they transition off the four-track calendar.

Cost: \$5,000,000





SAFETY AND SECURITY

The Cherry Creek School District is committed to creating safe, respectful, and inclusive learning environments where all community members work together to promote academic excellence, civil behaviors, and social competence. All staff, students, and parents help create safe schools.

Mitigation/Prevention

Prevention steps are taken to ensure that:

- C** Communities are connected, inclusive, and work to prevent bullying
- A** Asset-building is integrated into the school, family, and community
- R** Responsive decision-making is based on data
- E** Expectations are clearly communicated to students, staff, and parents
- S** Socio-emotional behavior skills are taught

Preparedness/Planning

Preparedness includes plans that schools develop to facilitate an effective response when a crisis situation occurs.

This also includes planning for effective interventions with youth who demonstrate behavioral difficulties, including training of staff, students, and parents in **Early Warning Signs of Violence: Getting Help for Troubled Children**.

"The Arapahoe County Sheriff's Office is very fortunate to have partnered with the Cherry Creek School District and the four other law enforcement agencies that work with CCSD in the development of standard response protocols. When emergencies occur, CCSD and law enforcement agencies will be working together to ensure the best possible response. In day-to-day operations, the Arapahoe County Sheriff's Office values our great relationship with the Cherry Creek School District and adjacent law enforcement agencies to provide for great public safety in our community."

ARAPAHOE COUNTY SHERIFF, DAVID WALCHER



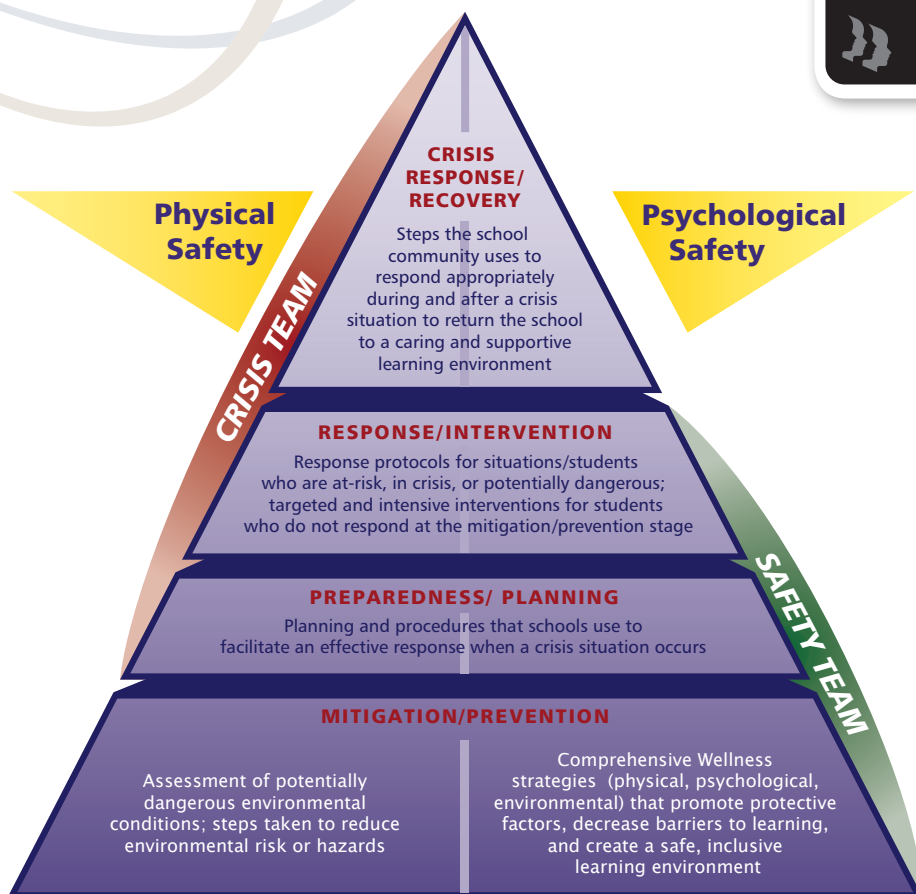
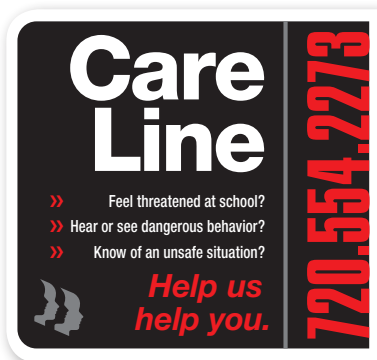


Intervention/Response

The Cherry Creek School District has response protocols for situations and/or students who are at risk, in crisis, or potentially dangerous. As needed, teams assess students and interventions are designed for students who do not respond to prevention efforts. This also includes implementing the CCSD team threat assessment process, and using the RTI/Problem Solving Process when needed.

Crisis Response/Recovery

Recovery includes the steps the school community uses to respond appropriately during and after a crisis situation for the care and recovery of students and staff. The goal is to return the school to a caring and supportive learning environment.



**Cherry Creek School District
Comprehensive Safe Schools Plan**



2021
CHERRY CREEK

SAFETY AND SECURITY



Recommended Safety Upgrades

COMMUNICATION

Radio System Upgrades	\$402,000
Implementation of a Uniform Dispatch Center	\$65,000
CARE Line Upgrades	\$100,000

PHYSICAL SAFETY

Additional Surveillance Cameras and Required Server Upgrades	\$520,000
Upgraded Key Card System and Laminate Glass	\$343,000
Dedicated Police Response Knox Boxes	\$450,000

Total Recommended for Safety Upgrades	\$1,880,000
--	--------------------

Safety Plan Recommendations Developed by:



Arapahoe County
Sheriff



Aurora Police
Department



Cherry Hills Village
Police Department



Denver Police
Department



Greenwood Village
Police Department



Aurora Fire
Department



Cunningham Fire
Department



South Metro Fire
Department





MAINTAINING COMMUNITY INVESTMENT

"People actively seek out homes in Cherry Creek Schools. The homes sell faster and hold their value better. Even families without school-aged children benefit from living in a community located in a quality school district. "

*RICHARD FRANK
PRESIDENT, CENTRE COMMUNITIES, LTD.,
MEMBER OF LRFPC*



MAINTAINING COMMUNITY INVESTMENT



2021
CHERRY CREEK



Maintaining Our Investments

The Long-Range Facilities Planning Committee also formed the Maintenance and Renovation Subcommittees to review needs of existing CCSD facilities. Feedback was collected from principals and CCSD maintenance staff. Yon Tanner Architects was hired to tour all facilities and compile a list of maintenance, repairs, and replacement needs. The subcommittee discussed priorities and the timing of these potential projects and worked with staff to narrow the extensive list of recommended architectural, electrical, mechanical, and plumbing projects to those listed in this report.

Renovations are most often necessary due to:

- ▶ Age of a facility
- ▶ High levels of use
- ▶ Equipment that has exceeded its useful life
- ▶ Changing landscape of classroom instruction (technology, inclusionary practices, comprehensive programming options)

Recommended Major Maintenance Expenses

Asphalt/Concrete

\$ 1,930,800

Age and weather are factors that break down parking lots, curbing, sidewalks, and entryways over time. These surfaces need to be replaced for pedestrian and vehicle safety.

Doors/Hardware/Keying

\$ 1,339,000

Cherry Creek has an estimated 30,000 doors, of which 6,200 are fire-rated. All students, staff, and visitors utilize these doors and hardware daily resulting in fatigue of components. Cherry Creek also needs to replace outdated hardware and key systems that do not meet current recommended maintenance standards, and parts are no longer readily available.

Glazing

\$ 750,000

Due to age and weathering of the glazing system components, windows are showing signs of distress and are leaking. Additionally, Cherry Creek needs to replace the older operable windows and single-pane systems as they contribute to energy loss and are inefficient.

Carpet/Flooring

\$ 1,790,000

Due to age and condition of flooring, areas within schools and facilities require new carpeting and/or tiling for aesthetics and safety.

Mechanical/Electrical/Plumbing

\$48,329,198

Some of our mechanical, electrical, and plumbing equipment has deteriorated due to age. Additionally, some of our equipment has been repaired to a point where it will no longer pass safety inspections and needs to be replaced.



2021

CHERRY CREEK



MAINTAINING COMMUNITY INVESTMENT

Fire Protection

\$ 722,446

Fire sprinkler systems require upgrades to conform to current codes.

Roofing

\$ 10,000,000

Cherry Creek evaluates all facility roofs on a yearly basis and repairs them when possible. Roofs are expected to last approximately 15 years, depending on weather and deterioration caused by ultraviolet rays. Many of CCSD's roofs are 25+ years old.

Playgrounds

\$ 1,100,000

Upgrades are needed to conform to current codes and safety requirements. This includes equipment and/or ground surface replacement at specific school sites.

Tennis Courts and Tracks

\$ 2,600,000

Middle school and high school tracks and/or tennis courts require resurfacing and upgrades due to use and age. This is needed to provide safe surfaces for student and community use.

Specialty Architecture

\$ 4,858,556

Paint, caulking, ceilings, lockers, wall vinyl, movable wall replacement, and maintenance, minor construction/renovations/upgrades to schools and CCSD buildings are included here.

Utility Infrastructure

\$ 6,250,000

This includes domestic water lines, electrical lines, fire lines, gas lines, sanitary and storm sewers. These are typically the pipes you cannot see, but when they break they become a major problem and expense.



2021
CHERRY CREEK



PROPOSED INVESTMENTS AT EACH SCHOOL SITE

"Through our active involvement, we have seen that even with a rapid and diverse growth in the student body size, as well as, in the physical plant needs, CCSD – its administration, faculty, and support staff – has excelled in its emphasis on academic excellence while personalizing and respecting each student and his or her family's needs and aspirations. Also, it is with an attitude of gratitude that we congratulate CCSD for accepting and embellishing the positive efforts from every active parent, grandparent, and our business community."

FRANK AND SHERRY SARGENT
COMMUNITY MEMBERS



2021

CHERRY CREEK



"Without a public school system like Cherry Creek, our values, principles, and relationships are lost. Please continue to build upon the best school district in the state, and please continue to build schools that can serve our children in the most appropriate and safest environments possible. Continue to strive for excellence through new and innovative facilities, while working to provide the best teachers available."

*JERRY B. RICHMOND III,
EXECUTIVE V.P., COLORADO DIVISION,
RAINTREE INVESTMENT CORPORATION*



MAINTAINING COMMUNITY INVESTMENT



2021
CHERRY CREEK

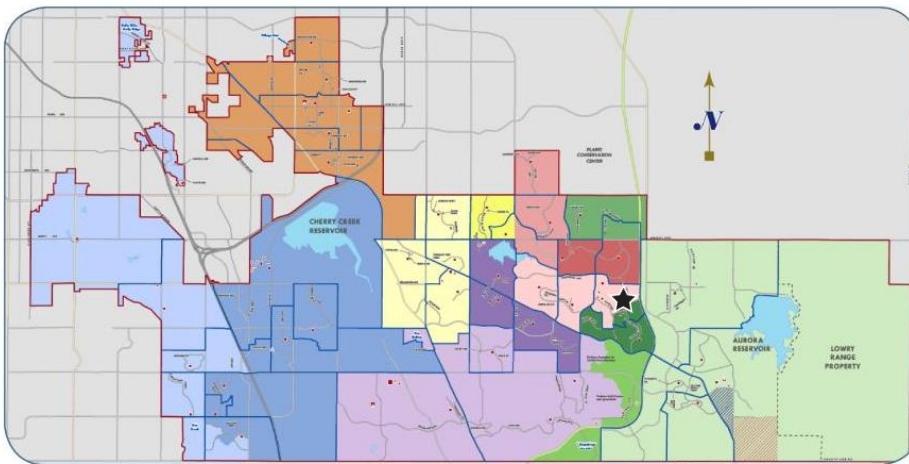


Antelope Ridge Elementary School

5455 South Tempe Street
Aurora, Colorado 80015

Year Opened 1999
Current Square Foot 56,243
Site Acreage 11

anteloperidge.cherrycreekschools.org



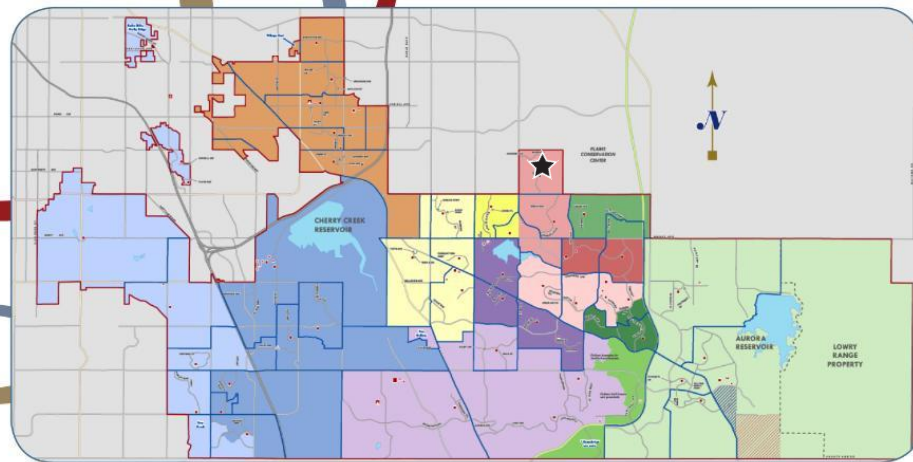
Proposed Investment	2016 Proposed Improvements
\$500,000	Innovation
\$504,220	Asphalt and concrete work; doors/hardware, fire protection system, mechanical system, and plumbing upgrades
Bond Year	Facility Improvement History
1999	Original Construction
2012	Classroom, media center and office carpet installation; windows/caulking; teachers' lounge floor repairs; block/brick resealing; security camera and DVR to digital IP system, kiln hood, domestic hot water supply upgrades

Arrowhead Elementary School

19100 East Bates Avenue
Aurora, Colorado 80013

Year Opened 1977
Current Square Footage 58,440
Site Acreage 7.6

arrowhead.cherrycreekschools.org



Proposed Investment	2016 Proposed Improvements
\$500,000	Innovation
\$2,713,760	Windows/caulking; fire protection system, mechanical system, plumbing, and playground upgrades
Bond Year	Facility Improvement History
1990	Classroom, stage/music area, and administrative area addition; art room, cafeteria, and media area renovations
1999	HVAC system replacement
2008	General and special education classroom, corridor, kitchen, music room, gym, cafeteria, library, computer lab, art room, student restroom, and administrative office renovation; flooring and kitchen HVAC system upgrades; ceiling, asphalt, plumbing fixture, and lighting system replacements; landscape and irrigation work
2012	Mobile unit carpet installation; door glazing/framing at south elevation; mobile unit restroom floor and retaining wall repairs; roof replacement; security cameras and DVR to digital IP system, main switch board, exterior lighting, gate valve, and kiln hood upgrades; relief fan noise reduction

MAINTAINING COMMUNITY INVESTMENT

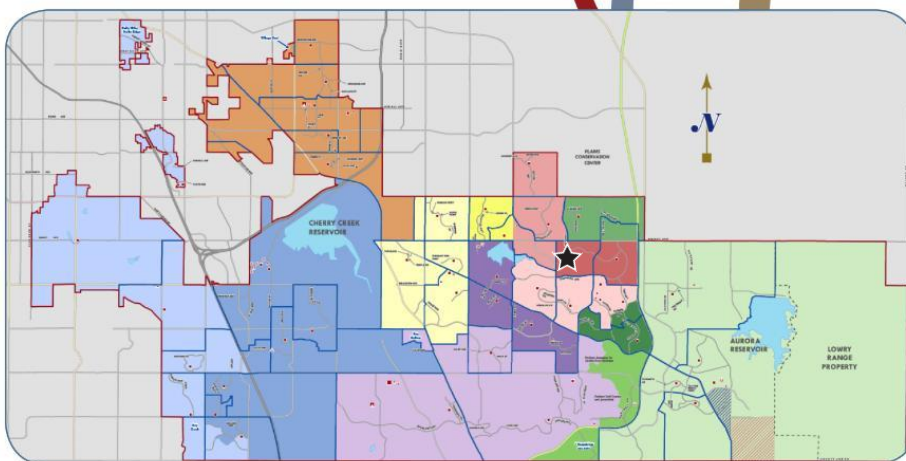


Aspen Crossing Elementary School

4655 South Himalaya Street
Aurora, Colorado 80015

Year Opened 2005
Current Square Footage 64,600
Site Acreage 10.33

aspencrossing.cherrycreekschools.org



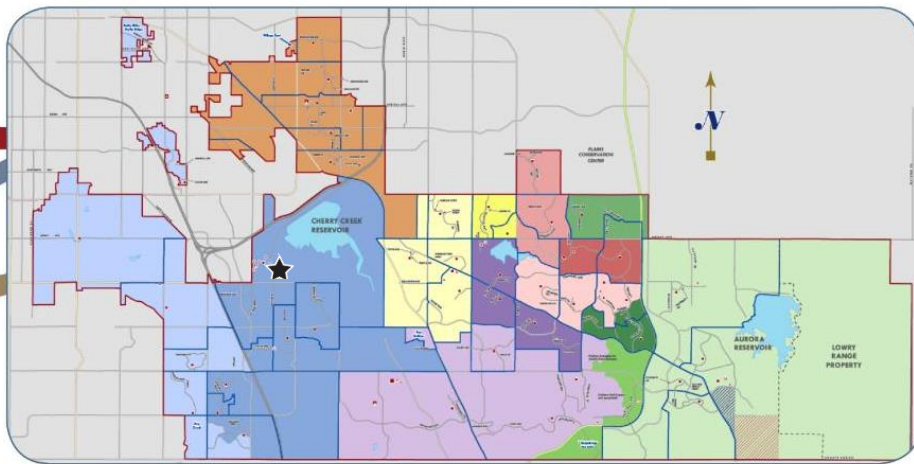
Proposed Investment	2016 Proposed Improvements
\$500,000	Innovation
\$ 30,800	Asphalt and concrete work
Bond Year	Facility Improvement History
2005	Original construction
2012	Security camera and DVR to digital IP system upgrades

Bellevue Elementary School

4851 South Dayton Avenue
Greenwood Village, Colorado 80111

Year Opened 1954
Current Square Footage 51,120
Site Acreage (included in CCHS) 87.22

bellevue.cherrycreekschools.org



Proposed Investment	2016 Proposed Improvements
\$500,000	Innovation
\$1,016,250	Asphalt work; traffic redesign
Bond Year	Facility Improvement History
1989	Building renovation
1995	HVAC system replacement
2003	Classroom addition
2008	Lighting system and temperature control upgrades; plumbing fixture replacements
2012	Window/caulking, classroom flooring, playbox wood timber and roof replacements; interior and exterior painting; security camera and DVR to digital IP system, exterior lighting, fire alarm notification system, dimming system, fire protection system, mechanical system, and domestic hot water circulation system upgrades; kiln hood installation; roof drain repair

MAINTAINING COMMUNITY INVESTMENT

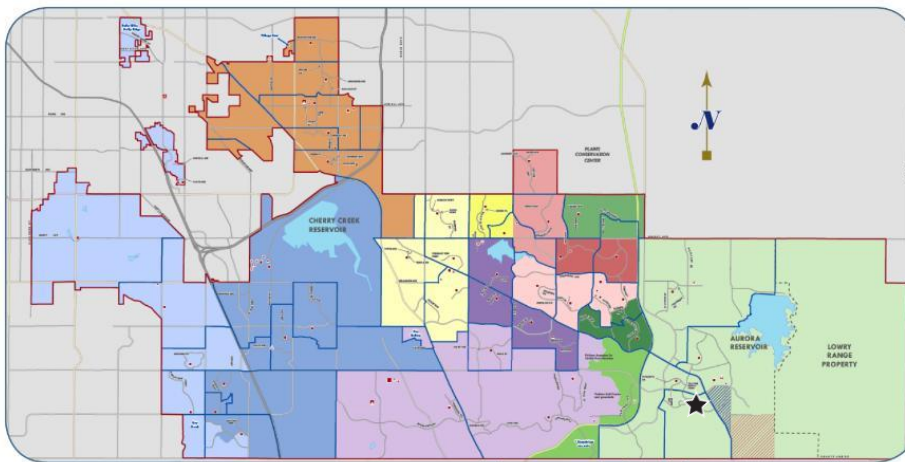


Black Forest Hills Elementary School

25233 East Glasgow Drive
Aurora, Colorado 80016

Year Opened	2012
Current Square Footage	68,866
Site Acreage	11

blackforesthills.cherrycreekschools.org



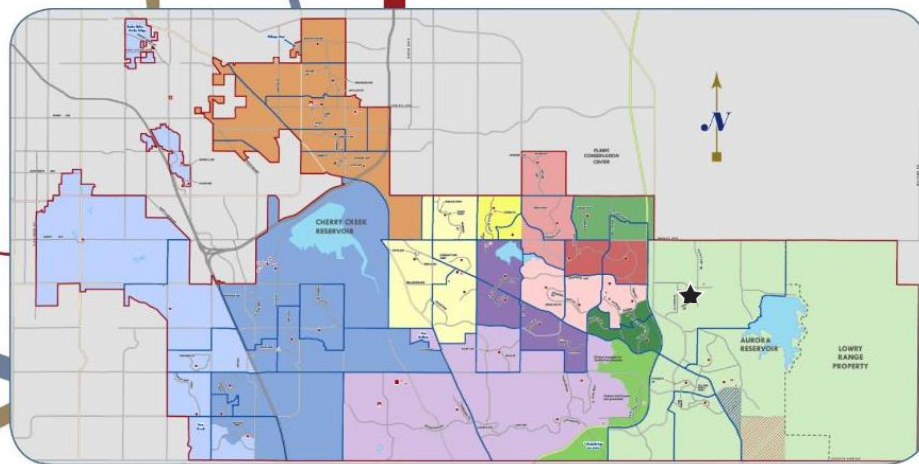
Proposed Investment	2016 Proposed Improvements
\$500,000	Innovation
Bond Year	Facility Improvement History
2012	Original construction

Buffalo Trail Elementary School

24300 East Progress Drive
Aurora, Colorado 80016

Year Opened 2007
Current Square Footage 66,380
Site Acreage 12.77

buffalotrail.cherrycreekschools.org



Proposed Investment	2016 Proposed Improvements
\$500,000	Innovation
\$ 34,550	Asphalt and concrete work
Bond Year	Facility Improvement History
2007	Original Construction
2012	Security camera and DVR to digital IP system upgrade; kiln hood replacement; chiller noise issue correction

MAINTAINING COMMUNITY INVESTMENT

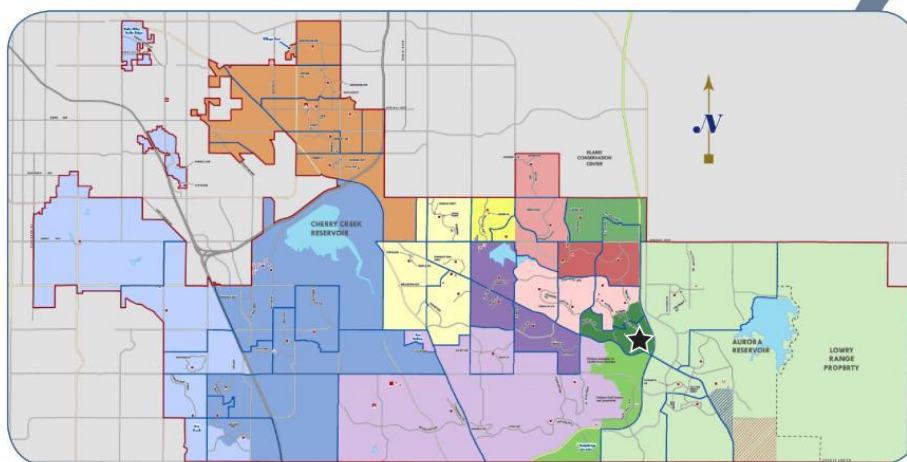


Canyon Creek Elementary School

6070 South Versailles Parkway
Aurora, Colorado 80015

Year Opened 2002
Current Square Footage 60,930
Site Acreage 11.61

canyoncreek.cherrycreekschools.org



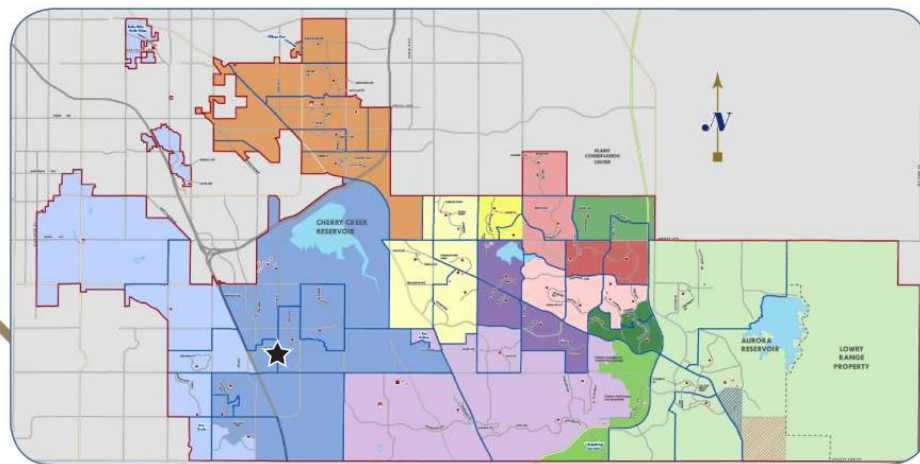
Proposed Investment	2016 Proposed Improvements
\$500,000	Innovation
\$ 16,700	Asphalt and concrete work
Bond Year	Facility Improvement History
2002	Original construction
2012	Window caulking; cafeteria and restroom floor repairs; security camera and DVR to digital IP system upgrades; kiln hood and hot water heater replacement

Cherry Creek Academy

6260 South Dayton Street
Englewood, Colorado 80111

Year Opened 1995
Current Square Footage 57,130
Site Acreage 4

cherrycreekacademy.org



Proposed Investment	2016 Proposed Improvements
\$ 500,000	Innovation
\$5,000,000	Gym and lower level classroom replacements
Bond Year	Facility Improvement History
1968*	*Originally constructed as a church of 22,718 square feet; renovations between 1968-1998 added an additional 20,612 square feet for a total of 43,430 square feet
1998	Cherry Creek Academy acquired this property
2008	New addition of 13,700 square feet and renovation of existing space
2012	Roof replacement over older section; gym floor replacement/stiffening; HVAC system and security camera and DVR to digital IP system upgrades

MAINTAINING COMMUNITY INVESTMENT



2021
CHERRY CREEK

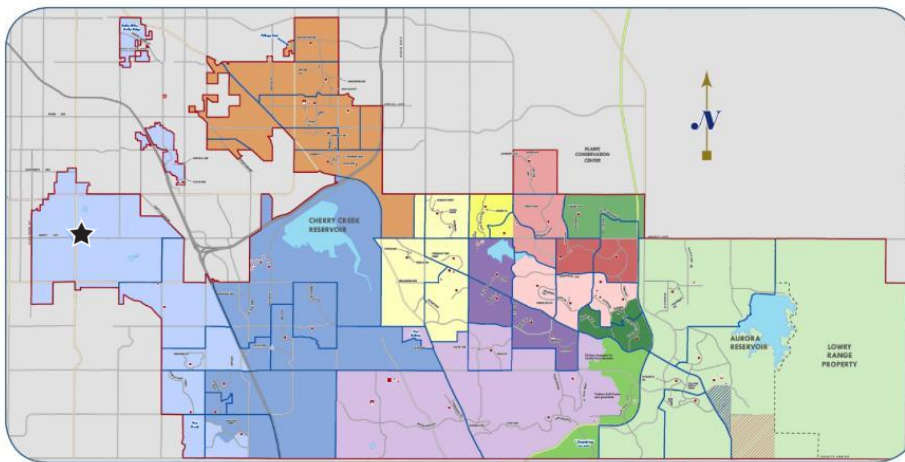


Cherry Hills Village Elementary School

2400 East Quincy Avenue
Cherry Hills Village, Colorado 80113

Year Opened 1983
Current Square Footage 55,319
Site Acreage 9.32

cherryhillsvillage.cherrycreekschools.org



Proposed Investment	2016 Proposed Improvements
\$500,000	Innovation
\$439,775	Asphalt and concrete work; electrical system, mechanical system, and plumbing upgrades
Bond Year	Facility Improvement History
1988	Classroom addition
1999	Cafeteria expansion; HVAC system replacement
2008	Lighting system upgrades; plumbing fixture replacements
2012	Latronica Center renovation; ceiling, flooring, classroom casework, and sidewalk repairs; window/caulking, door hardware/keying, and plumbing replacements; interior and exterior painting; exterior lighting, student restroom, fire alarm notification system, gym sound system, fire protection system, security camera and DVR to digital IP system, and mechanical system upgrades; plumbing fixture replacements



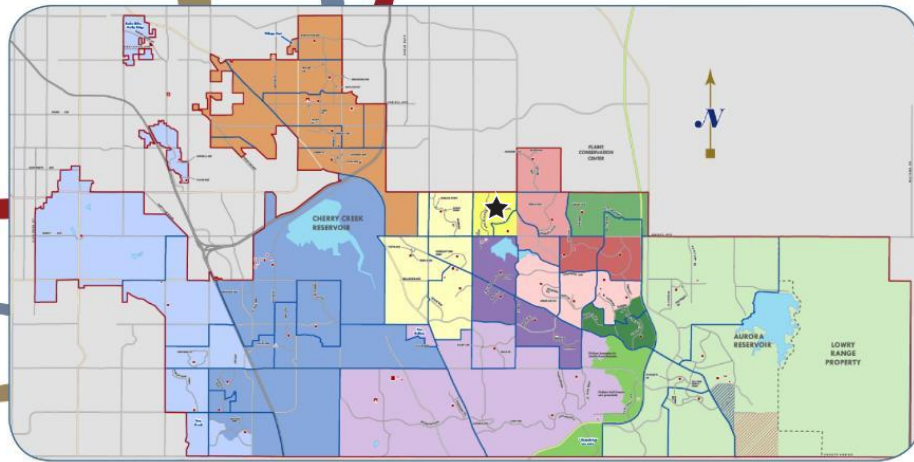
2021
CHERRY CREEK

Cimarron Elementary School

17373 East Lehigh Place
Aurora, Colorado 80013

Year Opened 1979
Current Square Footage 54,231
Site Acreage 6.78

cimarron.cherrycreekschools.org



Proposed Investment	2016 Proposed Improvements
\$500,000	Innovation
\$ 31,470	Asphalt and concrete work; fire protection system upgrades
Bond Year	Facility Improvement History
1990	Classroom addition; stage/music area, administrative area, media center, and cafeteria renovations
1999	Partial HVAC system replacement
2008	General and special education classroom, corridor, kitchen, music room, gym, cafeteria, library, computer area, art room, student restroom, and administrative office remodeling; asphalt playground repairs; rotomilling and installation of new topping to existing asphalt drives and parking lots; landscape and irrigation work; ceiling, lighting, partial HVAC system, and electrical distribution system replacements; fire alarm system, flooring, and minor plumbing upgrades
2012	Mobile unit floor repairs; back-up generator, window/caulking, kiln hood, gym sound system, dimming system, and plumbing fixture replacements; exterior lighting, security camera and DVR to digital IP system, and domestic hot water supply upgrades

MAINTAINING COMMUNITY INVESTMENT

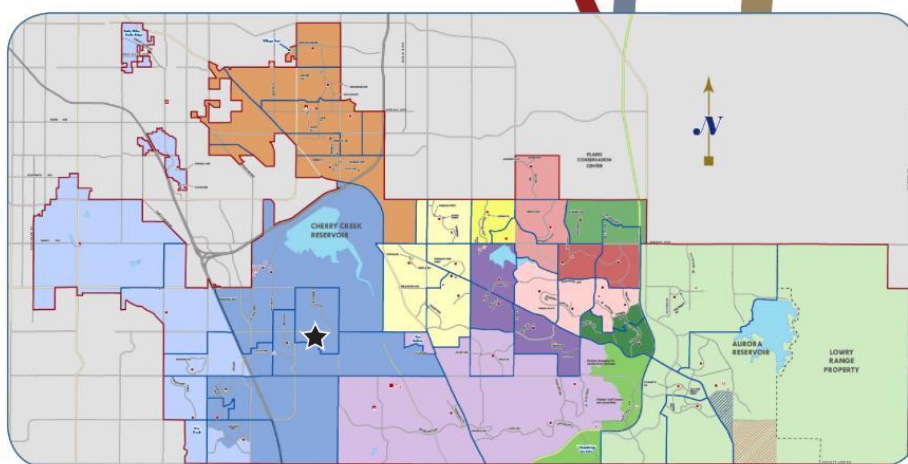


Cottonwood Creek Elementary School

11200 East Orchard Road
Englewood, Colorado 80111

Year Opened 1976
Current Square Footage 57,185
Site Acreage 8.56

cottonwoodcreek.cherrycreekschools.org



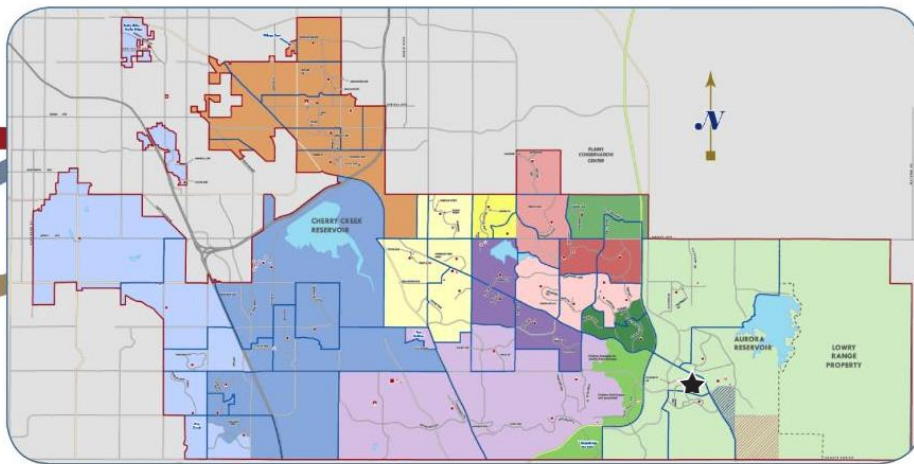
Proposed Investment	2016 Proposed Improvements
\$500,000	Innovation
\$212,080	Fire protection system and playground upgrades
Bond Year	Facility Improvement History
1990	Classroom, stage/music area, and administrative area additions; art room, cafeteria, and media room renovations
1999	HVAC system replacement
2008	General and special education classroom, corridor, kitchen, music room, gym, cafeteria, library, computer lab, art room, student restroom, and administrative office remodeling; flooring, minor plumbing, and fire alarm system upgrades; asphalt playground repairs; rotomilling and installation of new topping to existing asphalt drives and parking lots; landscape and irrigation work; ceiling and electrical distribution system replacements
2012	Roof replacement, security camera and DVR to digital IP system, exterior lighting and mechanical system upgrades; back-up generator, gate valve, and domestic hot water piping replacements

Coyote Hills Elementary School

24605 East Davies Way
Aurora, Colorado 80016

Year Opened 2006
Current Square Footage 64,294
Site Acreage 12.7

coyotehills.cherrycreekschools.org



Proposed Investment	2016 Proposed Improvements
\$500,000	Innovation
\$ 25,000	Asphalt and concrete work
Bond Year	Facility Improvement History
2006	Original Construction
2012	Security camera and DVR to digital IP system upgrades; kiln hood installation

MAINTAINING COMMUNITY INVESTMENT

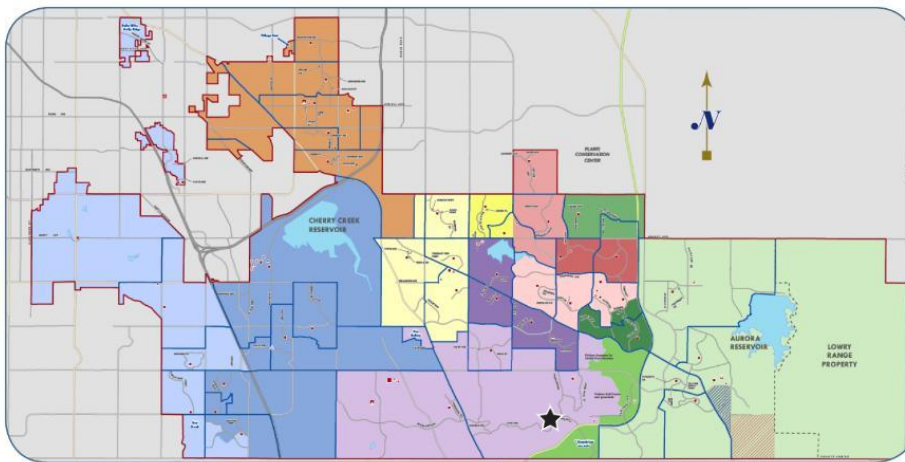


Creekside Elementary School

19993 East Long Avenue
Centennial, Colorado 80016

Year Opened 1986
Current Square Footage 54,600
Site Acreage 13.6

creekside.cherrycreekschools.org



Proposed Investment	2016 Proposed Improvements
\$500,000	Innovation
\$528,760	Window/caulking replacements; asphalt, fire protection system, mechanical system, and plumbing upgrades
Bond Year	Facility Improvement History
1999	Cafeteria expansion
2003	HVAC replacement; fire sprinkler system installation
2008	Domestic heating system and plumbing fixture replacements
2012	Roof, mobile unit carpet, door hardware/keying, kiln hood, plumbing, and CO ₂ sensor replacements; exterior window painting; security camera and DVR to digital IP system, exterior lighting, and fire alarm notification system, heating pump upgrades; gym drainage issue correction



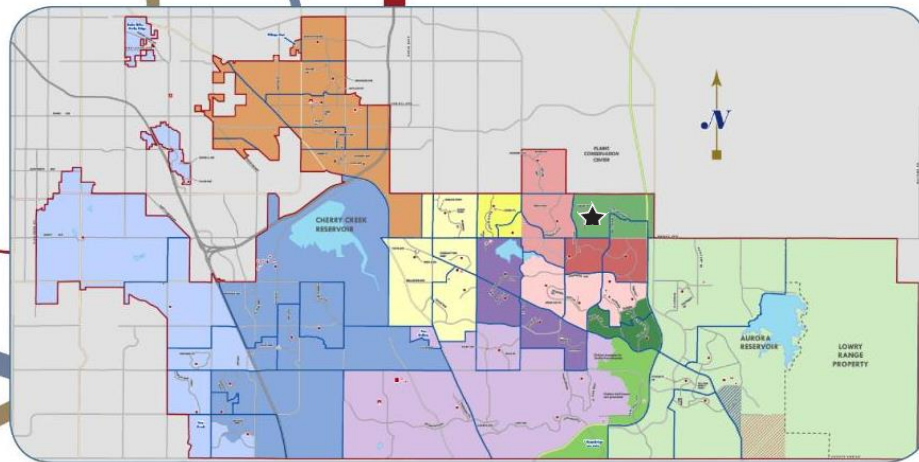
2021
CHERRY CREEK

Dakota Valley Elementary School

3950 South Kirk Way
Aurora, Colorado 80013

Year Opened 1999
Current Square Footage 56,243
Site Acreage 12.7

dakotavalley.cherrycreekschools.org



MAINTAINING COMMUNITY INVESTMENT

Proposed Investment	2016 Proposed Improvements
\$500,000	Innovation
\$2,387,365	Asphalt work; door/hardware, electrical system, mechanical system, and plumbing upgrades
Bond Year	Facility Improvement History
1999	Original construction
2012	Block/brick resealing; classroom and media center carpet replacement; caulking; cafeteria and restroom floor repairs; security camera and DVR to digital IP system, boiler room, and domestic water system upgrades; kiln hood installation

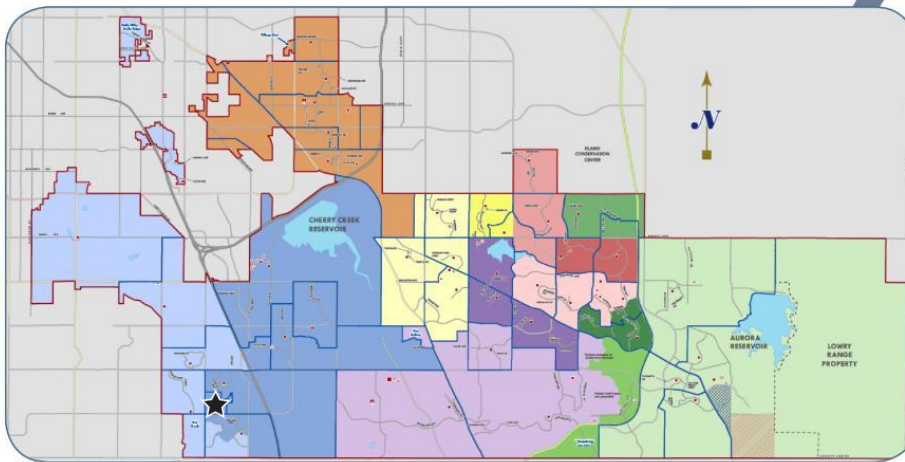


Dry Creek Elementary School

7686 East Hinsdale Avenue
Centennial, Colorado 80112

Year Opened 1972
Current Square Footage 54,650
Site Acreage 5.9

drycreek.cherrycreekschools.org



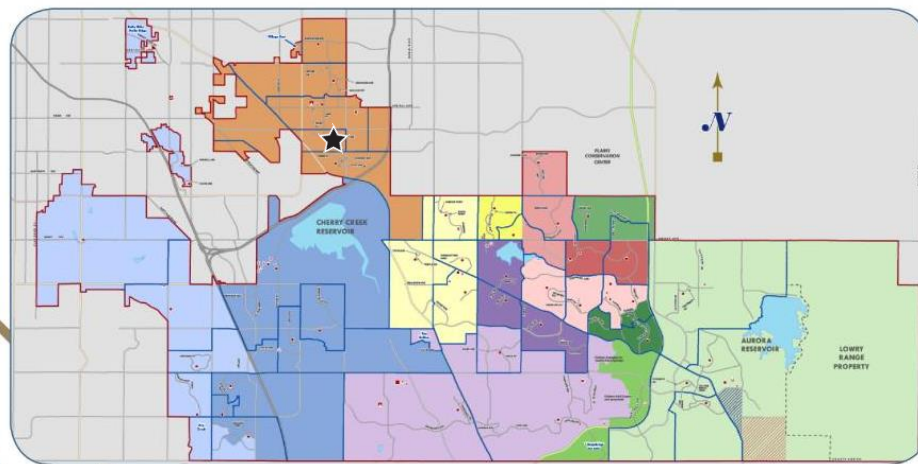
Proposed Investment	2016 Proposed Improvements
\$500,000	Innovation
\$4,405,950	Asphalt and concrete work; roof and carpet/flooring replacements; mechanical system, plumbing fixture, and playground upgrades
Bond Year	Facility Improvement History
1995	HVAC system replacement
1999	Building addition and renovation
2008	Lighting system, domestic hot water system, and partial HVAC system replacements
2012	Door glazing/framing; door hardware/keying replacements; security camera and DVR to digital IP system, fire alarm notification system, exterior lighting, and mechanical system upgrades; kiln hood installation

Eastridge Community Elementary School

11777 East Wesley Avenue
Aurora, Colorado 80014

Year Opened 1963
Current Square Footage 80,000
Site Acreage 16.66

eastridge.cherrycreekschools.org



Proposed Investment	2016 Proposed Improvements
\$500,000	Innovation
\$1,252,270	Cafeteria renovation; asphalt, fire protection system and door/hardware upgrades; carpet/flooring replacement
Bond Year	Facility Improvement History
2003	Building renovation and addition
2012	Security camera and DVR to digital IP system and mechanical system upgrades; kiln hood installation; boiler, gate valve, and sewer pipe to street replacements

MAINTAINING COMMUNITY INVESTMENT



2021
CHERRY CREEK

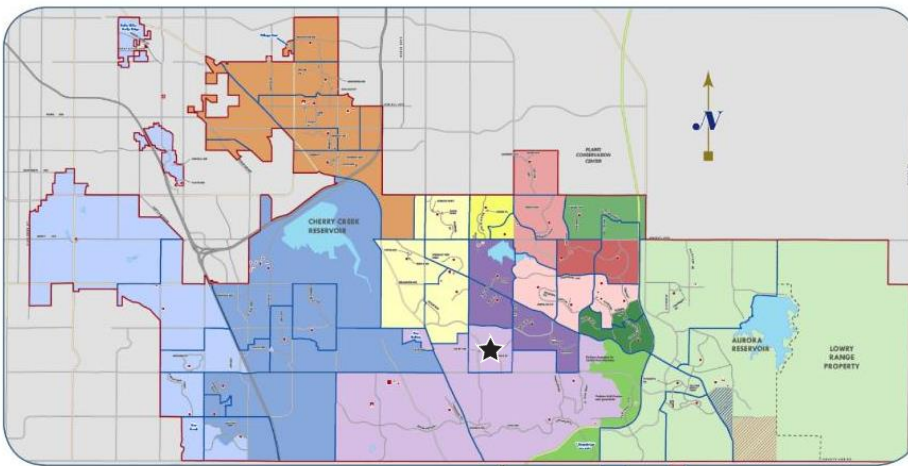


Fox Hollow Elementary School

6363 South Waco Street
Aurora, Colorado 80016

Year Opened 2001
Current Square Footage 60,930
Site Acreage 12.55

foxhollow.cherrycreekschools.org



Proposed Investment	2016 Proposed Improvements
\$500,000	Innovation
\$ 26,200	Concrete work; electrical system upgrades
Bond Year	Facility Improvement History
2001	Original construction
2012	Security camera and DVR to digital IP system upgrades; kiln hood installation; domestic backflow system replacement; cafeteria and restroom floor repairs

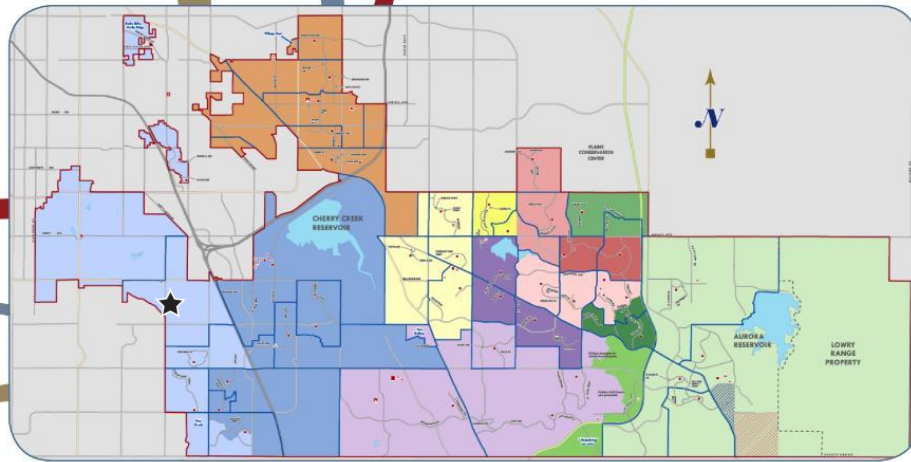


Greenwood Elementary School

5550 South Holly Street
Greenwood Village, Colorado 80111

Year Opened 1958
Current Square Footage 50,504
Site Acreage 8.53

greenwood.cherrycreekschools.org



Proposed Investment	2016 Proposed Improvements
\$500,000	Innovation
\$220,720	Electrical system, fire protection system, and playground upgrades
Bond Year	Facility Improvement History
1990	HVAC system upgrades; classroom addition
2003	Main office renovation; parking lot addition; temperature control upgrades
2008	Univent mechanical system (for code compliance) and ceiling replacements; flooring, minor plumbing, and landscape upgrades; lighting system retrofit; fire suppression system installation
2012	Flooring replacement involving asbestos abatement; interior painting; floor repairs at stair treads; security camera and DVR to digital IP system and service conductor upgrades; dimming system and exterior lighting installations; chiller, kiln hood, domestic water supply, and plumbing fixture replacements

MAINTAINING COMMUNITY INVESTMENT

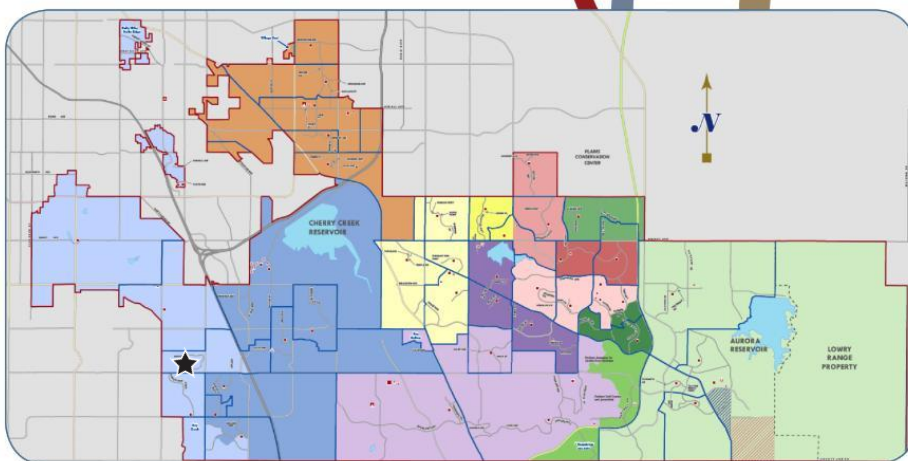


Heritage Elementary School

6867 East Heritage Place South
Centennial, Colorado 80111

Year Opened 1976
Current Square Footage 40,600
Site Acreage 8

heritage.cherrycreekschools.org



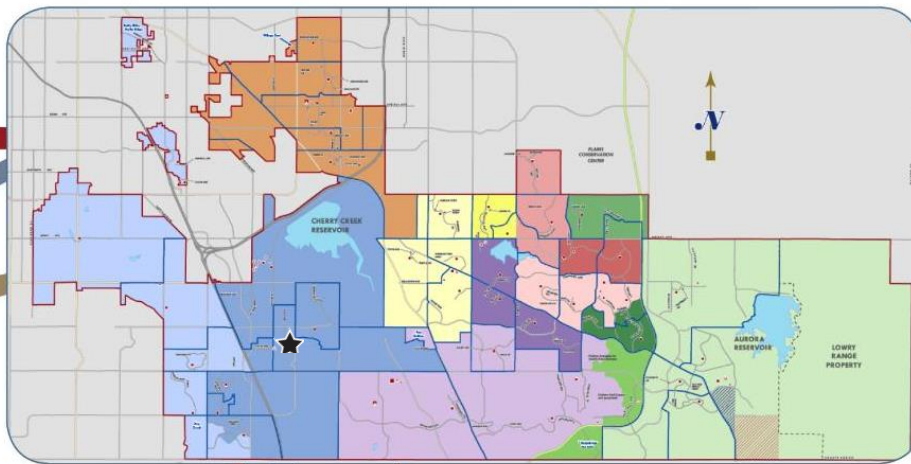
Proposed	2016 Proposed Improvements
\$500,000	Innovation
\$ 22,500	Asphalt and concrete upgrades
Bond Year	Facility Improvement History
1990	Classroom additions
1999	HVAC system replacement
2008	General and special education classroom, corridor, kitchen, music room, gym, cafeteria, library, computer lab, art room, student restroom and administrative office remodeling; fire alarm system and flooring upgrades; electrical distribution system, plumbing fixture, lighting and ceiling replacements; asphalt playground repairs; rotomilling and installation of new topping to the existing asphalt drives and parking lots; landscape and irrigation work; fire suppression system installation
2012	Security camera and DVR to digital IP system, exterior lighting, and gym sound upgrades; gate valve, kitchen air unit and kiln hood installations; door hardware/keying replacements

High Plains Elementary School

6100 South Fulton Street
Englewood, Colorado 80111

Year Opened 1978
Current Square Footage 55,119
Site Acreage 9.36

highplains.cherrycreekschools.org



Proposed Investment	2016 Proposed Improvements
\$500,000	Innovation
\$844,085	Asphalt and concrete work, fire protection system upgrades; roof replacement
Bond Year	Facility Improvement History
1990	Classroom additions; stage/music area, administrative area, media center, and cafeteria renovations
1999	HVAC system replacement
2008	General and special education classrooms, corridor, kitchen, music room, gym, cafeteria, library, computer lab, art room, student restroom, and administrative office remodeling; fire alarm system and flooring upgrades; electrical distribution system, partial HVAC system, lighting and ceiling replacements; asphalt playground repairs; rotomilling and installation of new topping to existing asphalt drives and parking lots; landscape and irrigation work; minor plumbing and sanitary system repairs
2012	Exterior lighting and security camera and DVR to digital IP system upgrades; back-up generator, main switch board, dimmer system, cabinet unit heaters, roof fans, and gate valve replacements; kiln hood installation

MAINTAINING COMMUNITY INVESTMENT



2021
CHERRY CREEK

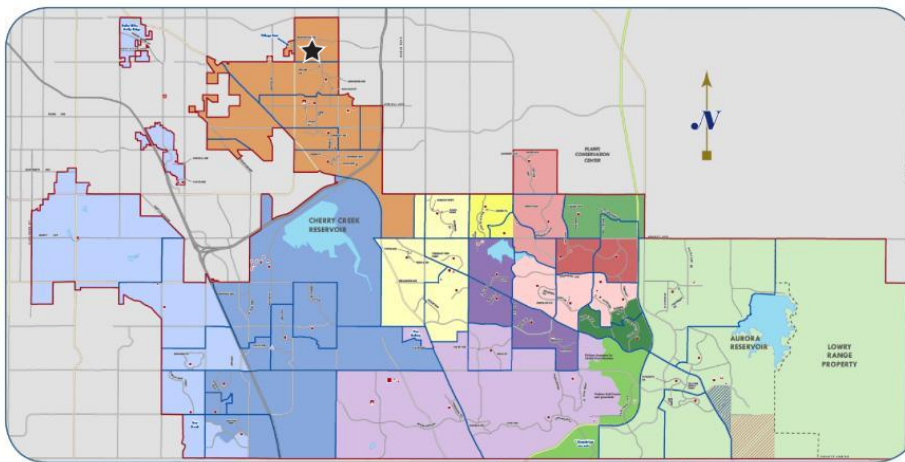


Highline Community Elementary School

11000 East Exposition Avenue
Aurora, Colorado 80012

Year Opened	1991
Current Square Footage	53,600
Site Acreage	12.25

highline.cherrycreekschools.org



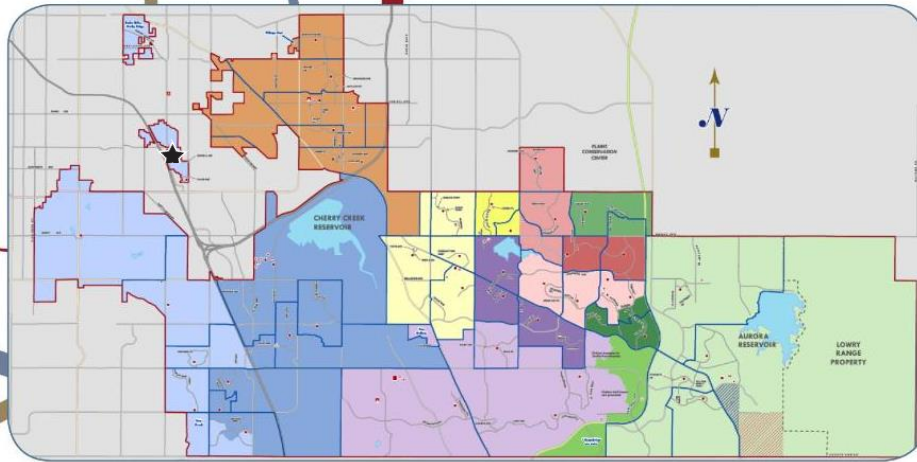
Proposed Investment	2016 Proposed Improvements
\$500,000	Innovation
\$415,420	Door/hardware, window/caulking, carpet/flooring, electrical system, and fire protection system upgrades
Bond Year	Facility Improvement History
2008	Lighting system retrofits; HVAC control system and minor plumbing upgrades
2012	Cafeteria floor repair; interior painting; security camera and DVR to digital IP system, fire alarm notification system, exterior lighting, gym sound system, mechanical system, boiler, plumbing, and back-up generator upgrades; kiln hood installation

Holly Hills Elementary School

6161 East Cornell Avenue
Denver, Colorado 80222

Year Opened 1958
Current Square Footage 38,292
Site Acreage 9.87

thehollys.cherrycreekschools.org



Proposed Investment	2016 Proposed Improvements
\$500,000	Innovation
\$200,000	Playground upgrades
Bond Year	Facility Improvement History
1988	Building addition and renovation
1995	HVAC system upgrade
2003	Partial HVAC system improvement
2008	Lighting system, partial HVAC system and plumbing fixture replacements
2012	Interior wall covering and door hardware/keying replacements; interior and exterior painting; security cameras and DVR to digital IP system, site drainage, playground, fire alarm notification system, exterior lighting, plumbing, and mechanical system upgrades; back-up generator replacement; dimming system and kiln hood installations

MAINTAINING COMMUNITY INVESTMENT

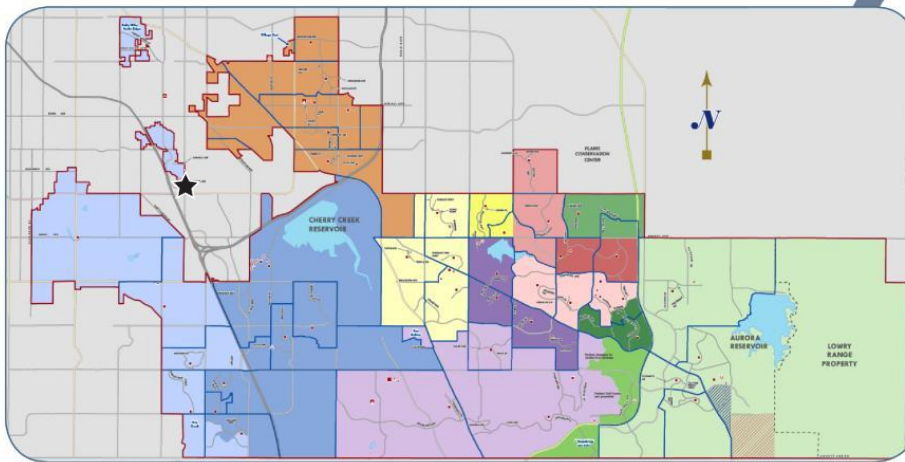


Holly Ridge Primary School

3301 South Monaco Parkway
Denver, Colorado 80222

Year Opened 1962
Current Square Footage 37,894
Site Acreage 6.72

thehollys.cherrycreekschools.org



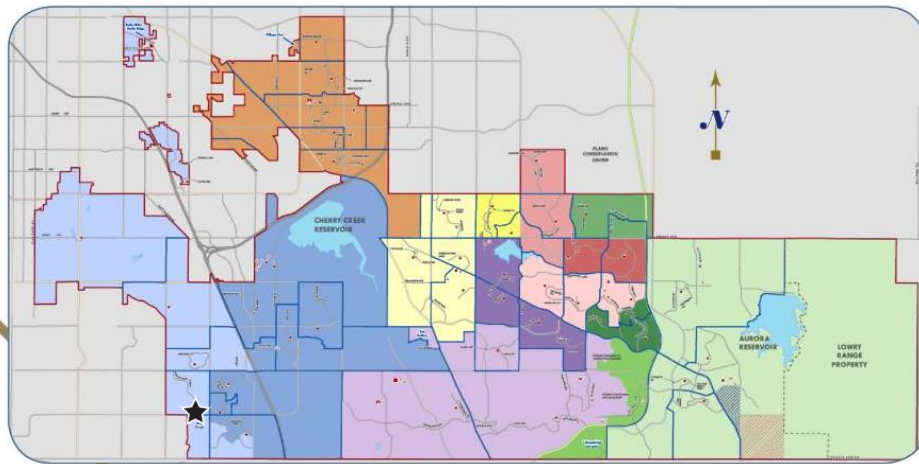
Proposed Investment	2016 Proposed Improvements
\$500,000	Innovation
\$780,450	Asphalt and concrete work; cafeteria renovation
Bond Year	Facility Improvement History
1995	HVAC system upgrade
2003	Building renovation; HVAC system and window replacements
2008	Lighting, electrical distribution system, and control system upgrades; plumbing fixture replacements
2012	Classroom, gym, hallway, and mobile unit carpet, kiln hood, and dimming system installations; cafeteria floor repairs; door hardware/keying, and primary transformer replacements; security camera and DVR to digital IP system, fire alarm notification system, exterior lighting, mechanical system, and plumbing upgrades

Homestead Elementary School

7451 South Homestead Parkway
Centennial, Colorado 80112

Year Opened 1977
Current Square Footage 51,358
Site Acreage 8.81

homestead.cherrycreekschools.org



Proposed Investment	2016 Proposed Improvements
\$ 500,000	Innovation
\$1,402,920	Asphalt work; fire protection system, mechanical system, and plumbing upgrades
Bond Year	Facility Improvement History
1990	Stage addition; administrative area, cafeteria, art room, and media center renovations; HVAC system replacement; additional parking lot creation
1999	HVAC system replacement
2008	General and special education classroom, corridor, kitchen, music room, gym, cafeteria, library, computer lab, art room, student restroom and administrative office remodeling; flooring upgrades; fire alarm system, lighting and ceiling replacements; asphalt playground repair; rotomilling and installation of new topping to existing asphalt drives and parking lots; landscape and irrigation work
2012	Security camera and DVR to digital IP system, exterior lighting, gate valve, gym dimming system, and gym sound upgrades; mechanical system and domestic expansion tank replacements

MAINTAINING COMMUNITY INVESTMENT



2021
CHERRY CREEK

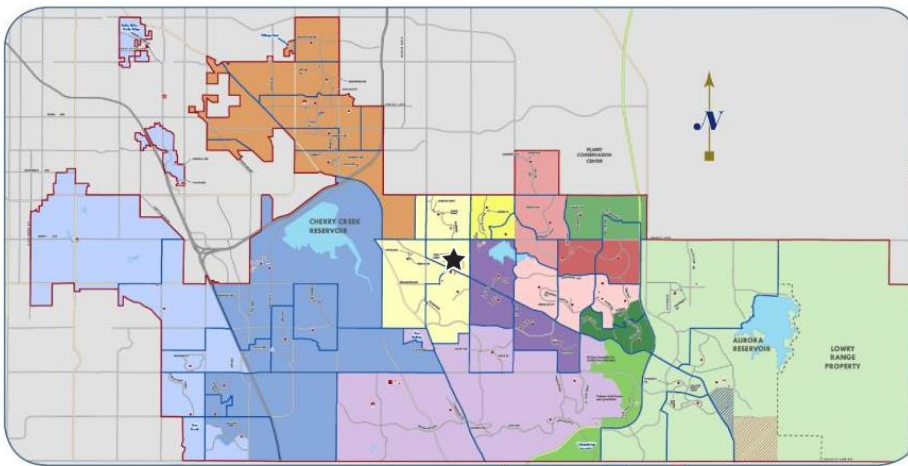


Independence Elementary School

4700 South Memphis Street
Aurora, Colorado 80015

Year Opened	1976
Current Square Footage	54,635
Site Acreage	7.01

independence.cherrycreekschools.org



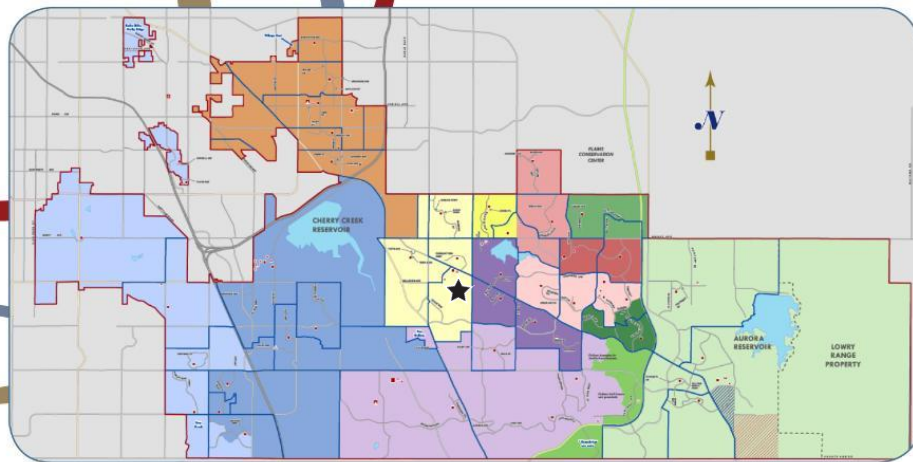
Proposed Investment	2016 Proposed Improvements
\$ 500,000	Innovation
\$1,569,165	Fire protection system, mechanical system, plumbing, and playground upgrades; roof replacement
Bond Year	Facility Improvement History
1990	Classroom additions; interior building renovation
1999	HVAC system replacement
2008	Entry drainage and ceiling repairs; flooring, electrical distribution system, door/door hardware upgrades; fire alarm system replacement
2012	Security camera and DVR to digital IP system and exterior lighting upgrades; gate valve, exhaust fan, door hardware/keying, playground equipment, and retaining wall replacements; kiln hood installation; door glazing/framing at southwest ground level

Indian Ridge Elementary School

16501 East Progress Drive
Aurora, Colorado 80015

Year Opened 1985
Current Square Footage 57,373
Site Acreage 14.35

indianridge.cherrycreekschools.org



MAINTAINING COMMUNITY INVESTMENT

Proposed Investment	2016 Proposed Improvements
\$500,000	Innovation
\$2,272,500	Asphalt and concrete work; mechanical system and plumbing upgrades
Bond Year	Facility Improvement History
1995	Building addition and renovation
2003	HVAC system replacement
2008	Lighting system and temperature control system upgrades; back-up generator and air distribution system replacements
2012	Security camera and DVR to digital IP system, exterior lighting, fire alarm notification system, gym sound, gym dimming system, gate valve and water fountain upgrades; window/caulking and door hardware/keying replacements; classroom and building exterior painting; kiln hood installation; restroom floor repairs

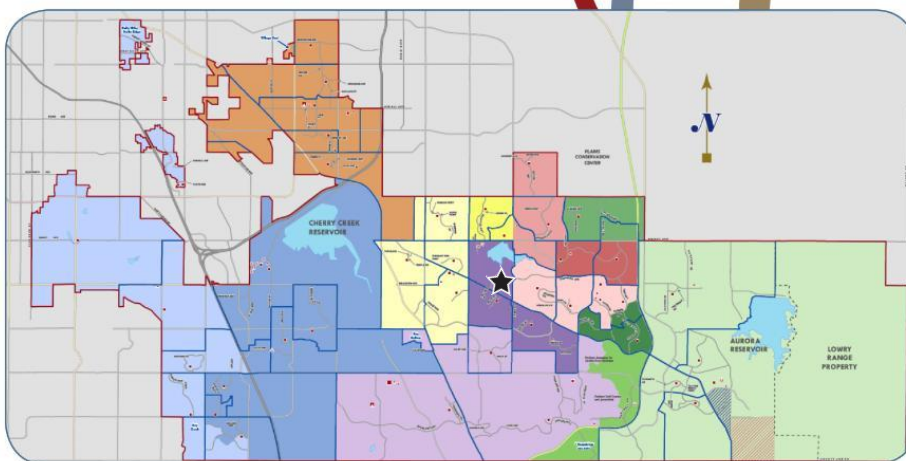


Meadow Point Elementary School

17901 East Grand Avenue
Aurora, Colorado 80015

Year Opened 1982
Current Square Footage 53,100
Site Acreage 7.48

meadowpoint.cherrycreekschools.org



Proposed Investment	2016 Proposed Improvements
\$500,000	Innovation
\$2,081,600	Electrical system, fire protection system, mechanical system, and plumbing upgrades; cafeteria renovation
Bond Year	Facility Improvement History
1983	Classroom additions
1999	Original part of building HVAC system replacement
2008	Fire suppression system installation; general and special education classrooms, corridor, kitchen, music room, gym, cafeteria, library, computer lab, art room, student restroom and administrative office remodeling; electrical distribution system, flooring and minor plumbing upgrades; kitchen air system and building ceiling replacements; asphalt playground repair; rotomilling and installation of new topping to existing asphalt drives and parking lots; landscape and irrigation work
2012	Security camera and DVR to digital IP system, exterior lighting, gym sound, gym dimming system, mixing valve, gate valve, cabinet unit heaters, exhaust fan, and water fountain upgrades; door glazing/framing at north and south ends of building; kiln hood installation

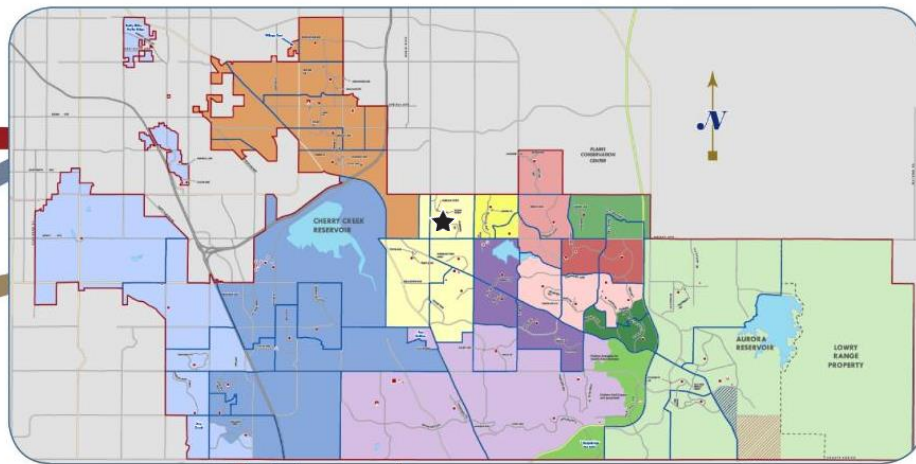


Mission Viejo Elementary School

3855 South Alicia Parkway
Aurora, Colorado 80013

Year Opened 1973
Current Square Footage 75,950
Site Acreage 8.42

missionviejo.cherrycreekschools.org



Proposed Investment	2016 Proposed Improvements
\$500,000	Innovation
\$439,770	Asphalt and concrete work; doors/door hardware, windows/caulking, electrical system, fire protection system, and playground upgrades
Bond Year	Facility Improvement History
1989	Building addition and renovation
1990	HVAC system replacement
2008	General and special education classroom, corridor, kitchen, gym, cafeteria, library, computer lab, art room, student restroom, and administrative office remodeling; flooring, lighting, boiler system, temperature control system, plumbing fixture, and ceiling replacements; asphalt playground repair; rotomilling and installation of new topping to existing asphalt drives and parking lots; landscape and irrigation work
2012	Security camera and DVR to digital IP system, exterior lighting, gym sound, gym dimming system, gate valve, mechanical system, and grease drainage upgrades; playbox wood timber replacement

MAINTAINING COMMUNITY INVESTMENT

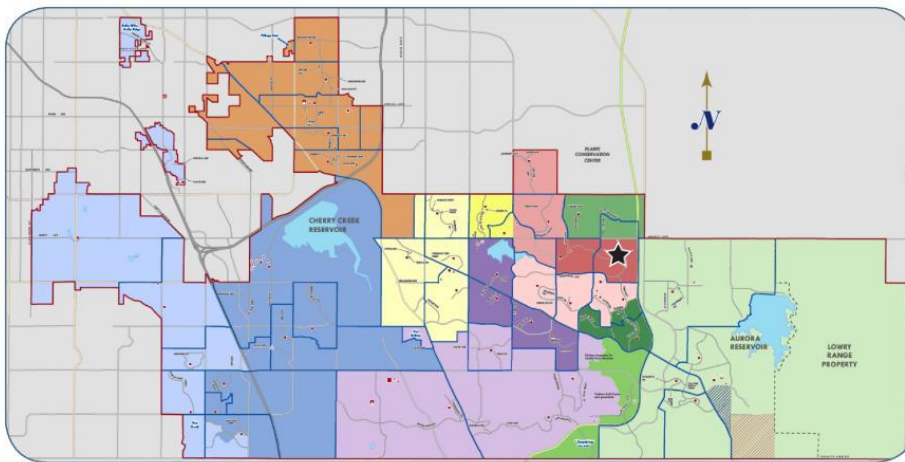


Mountain Vista Elementary School

22200 East Radcliff Parkway
Centennial, Colorado 80015

Year Opened	2013
Current Square Footage	68,866
Site Acreage	11.86

mountainvista.cherrycreekschools.org



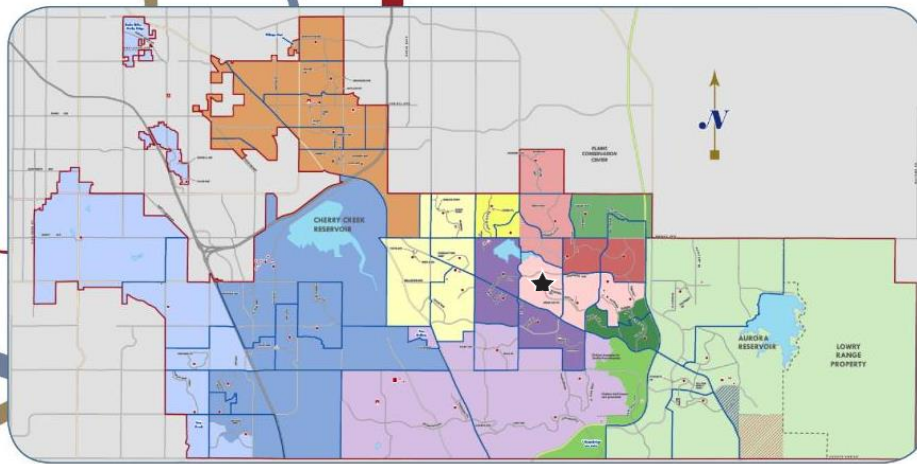
Proposed Investment	2016 Proposed Improvements
\$500,000	Innovation
Bond Year	Facility Improvement History
2013	New construction

Peakview Elementary School

19451 East Progress Circle
Aurora, Colorado 80015

Year Opened 1991
Current Square Footage 53,600
Site Acreage 12.3

peakview.cherrycreekschools.org



Proposed Investment	2016 Proposed Improvements
\$500,000	Innovation
\$196,820	Concrete work; windows/caulking, carpet/flooring, and fire protection system upgrades
Bond Year	Facility Improvement History
2008	Lighting system and temperature control system upgrades; plumbing fixture replacement
2012	Security camera and DVR to digital IP system, fire alarm notification system, exterior lighting, gate valve, water fountain, gym dimming system, gym sound system, boiler, and backflow device upgrades; roof and door hardware/keying replacements; interior painting; kiln hood installation

MAINTAINING COMMUNITY INVESTMENT



Pine Ridge Elementary School

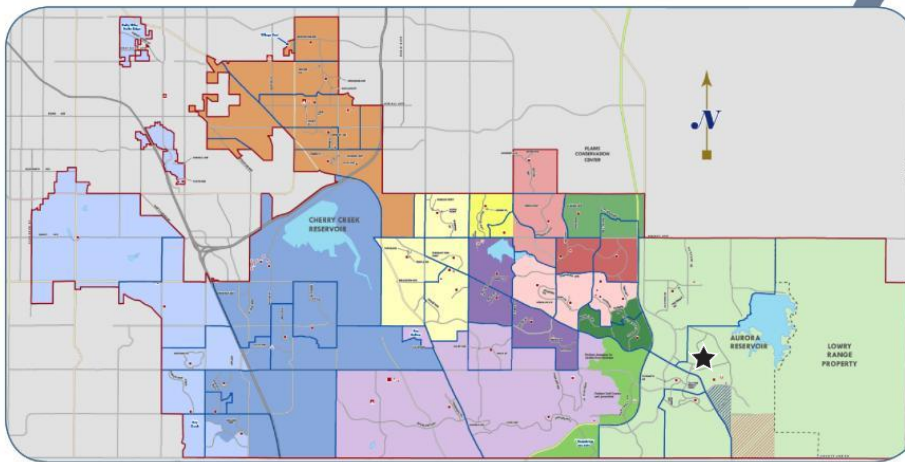
6525 South Wheatlands Parkway
Aurora, Colorado 80016

Year Opened 2010

Current Square Footage 68,866

Site Acreage 10

pineridge.cherrycreekschools.org



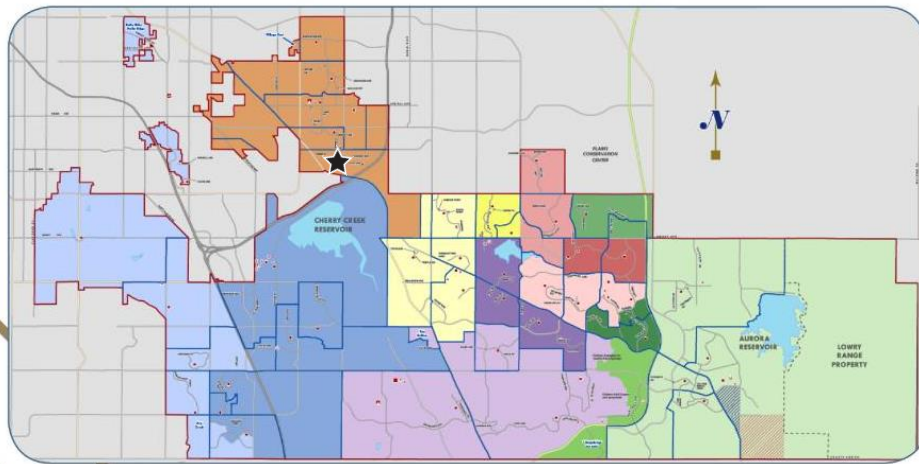
Proposed Investment	2016 Proposed Improvements
\$500,000	Innovation
\$ 37,500	Asphalt work
Bond Year	Facility Improvement History
2010	Original construction

Polton Community Elementary School

2985 South Oakland Street
Aurora, Colorado 80014

Year Opened 1972
Current Square Footage 70,715
Site Acreage 8.04

polton.cherrycreekschools.org



Proposed Investment	2016 Proposed Improvements
\$500,000	Innovation
\$1,241,920	Asphalt and concrete work; doors/hardware, carpet/flooring, fire protection system, mechanical system, and plumbing upgrades
Bond Year	Facility Improvement History
1999	Building renovation and addition
2008	Lighting system upgrade
2012	Roof, exterior lighting, gym dimming system, mechanical unit, and public address system replacements; security camera and DVR to digital IP system upgrade; kiln hood installation

MAINTAINING COMMUNITY INVESTMENT



2021
CHERRY CREEK

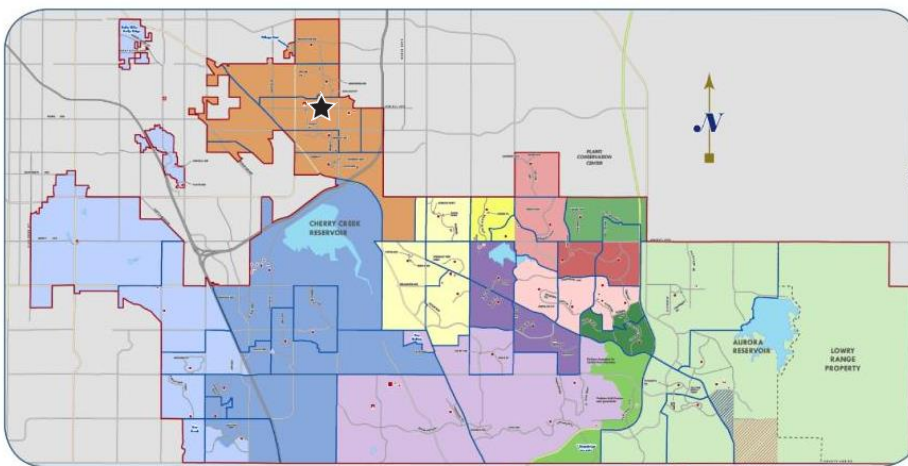


Ponderosa Elementary School

1885 South Lima Street
Aurora, Colorado 80012

Year Opened	1977
Current Square Footage	56,150
Site Acreage	9.35

ponderosa.cherrycreekschools.org



Proposed Investment	2016 Proposed Improvements
\$500,000	Innovation
\$3,386,370	Concrete work; window/caulking, electrical system, fire protection system, mechanical system, and plumbing upgrades; roof replacement
Bond Year	Facility Improvement History
1990	Classroom, stage/music area, and administrative office additions; art room, cafeteria, and media area renovations
1999	HVAC system replacement
2008	General and special education classroom, corridor, kitchen, music room, gym, cafeteria, library, computer lab, art room, student restroom and administrative office remodeling; flooring, mechanical room combustion air system, and minor plumbing upgrades; ceiling replacement; asphalt playground repair; rotomilling and installation of new topping to existing asphalt drives and parking lots; landscape and irrigation work
2012	Security camera and DVR to digital IP system, switchboard distribution system, exterior lighting, gym sound, kiln hood, gate valve and relief fan upgrades; playbox wood timber replacement; kiln hood installation

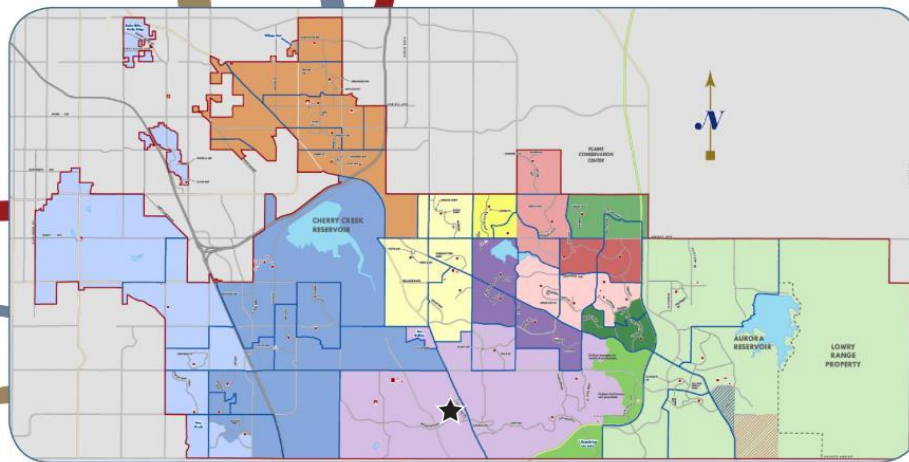


Red Hawk Ridge Elementary School

16251 East Geddes Avenue
Centennial, Colorado 80016

Year Opened 2005
Current Square Footage 73,800
Site Acreage 7.13

redhawkridge.cherrycreekschools.org



MAINTAINING COMMUNITY INVESTMENT

Proposed Investment	2016 Proposed Improvements
\$500,000	Innovation
\$638,120	Asphalt and concrete work; mechanical system and plumbing upgrades
Bond Year	Facility Improvement History
2005	Original construction
2012	Security camera and DVR to digital IP system upgrade; pond stormwater repairs; kiln hood installation

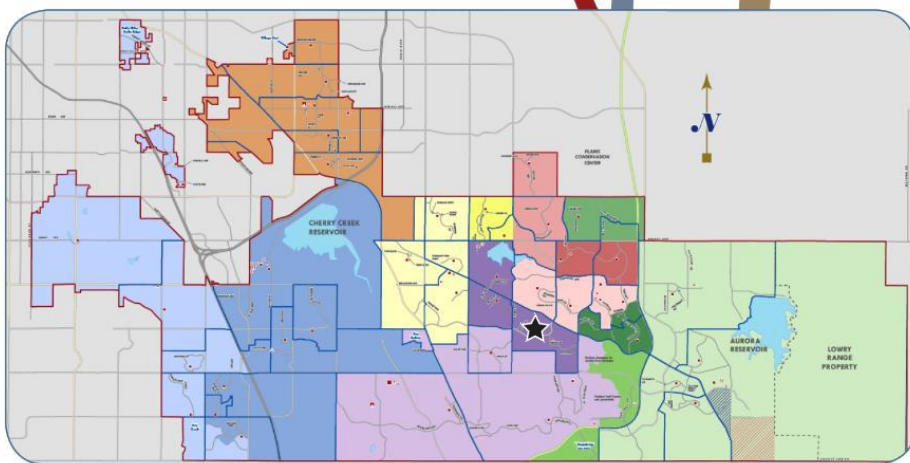


Rolling Hills Elementary School

5756 South Biscay Street
Aurora, Colorado 80015

Year Opened 1996
Current Square Footage 55,884
Site Acreage 9.95

rollinghills.cherrycreekschools.org



Proposed Investment	2016 Proposed Improvements
\$500,000	Innovation
\$3,328,650	Carpet/ flooring, electrical system, fire protection system, mechanical system, and plumbing upgrades
Bond Year	Facility Improvement History
1996	Original construction
2012	Security camera and DVR to digital IP system, fire alarm notification system, relief fan, HVAC system, domestic water heater, and asphalt upgrades; block/brick resealing; media center and special education classroom carpet replacement; caulking; interior painting; kiln hood installation

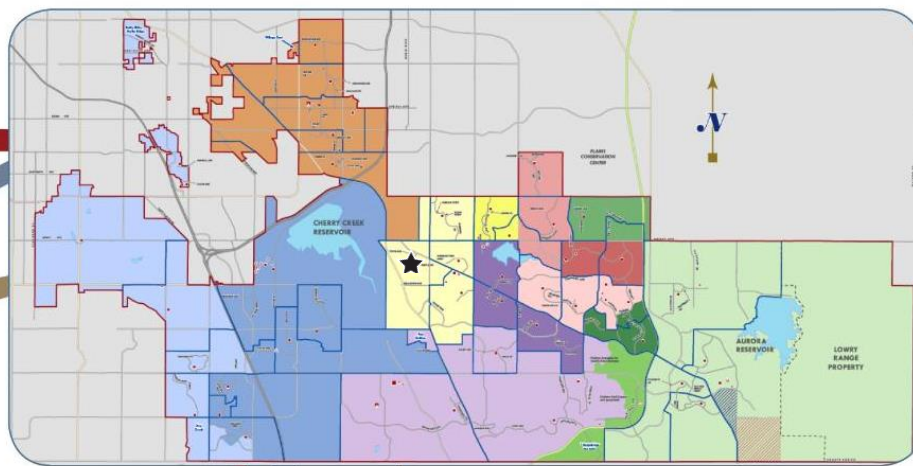


Sagebrush Elementary School

14700 East Temple Place
Aurora, Colorado 80015

Year Opened 1977
Current Square Footage 57,100
Site Acreage 7.66

sagebrush.cherrycreekschools.org



Proposed Investment	2016 Proposed Improvements
\$500,000	Innovation
\$2,459,220	Asphalt and concrete work; electrical system, fire protection system, mechanical system, and plumbing upgrades
Bond Year	Facility Improvement History
1990	Classroom, stage/music area, and administrative office additions; art room, cafeteria, and media area renovations
1999	HVAC system replacement
2008	General and special education classroom, corridor, kitchen, music room, gym, cafeteria, library, computer lab, art room, student restroom, and administrative office remodeling; fire alarm system, flooring, and minor plumbing upgrades; lighting and ceiling replacements; asphalt playground repairs; rotomilling and installation of new topping to existing asphalt drives and parking lots; landscape and irrigation work
2012	Security camera and DVR to digital IP system, retaining wall, exterior lighting, gym dimming system, kiln hood, relief fans, gate valve, and domestic expansion tank upgrades; gym unit modification; roof and playbox wood timber replacements

MAINTAINING COMMUNITY INVESTMENT

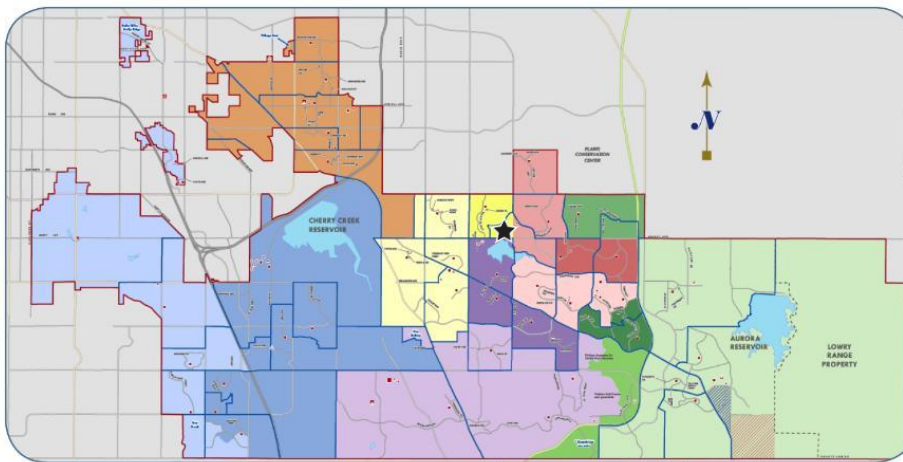


Summit Elementary School

18201 East Quincy Avenue
Aurora, Colorado 80015

Year Opened 1988
Current Square Footage 52,800
Site Acreage 11.61

summit.cherrycreekschools.org



Proposed Investment	2016 Proposed Improvements
\$500,000	Innovation
\$811,200	Asphalt and concrete work; roof replacement
Bond Year	Facility Improvement History
2003	HVAC system replacement
2008	Lighting, electrical distribution system, and minor plumbing upgrades; intercom system replacement
2012	Security camera and DVR to digital IP system, fire alarm notification system, exterior lighting, gym dimming system, gate valve and domestic expansion tank, gym sound system and main switchboard, and door hardware/keying upgrades; classroom and media center carpeting and back-up generator replacements; exterior painting; kiln hood installation



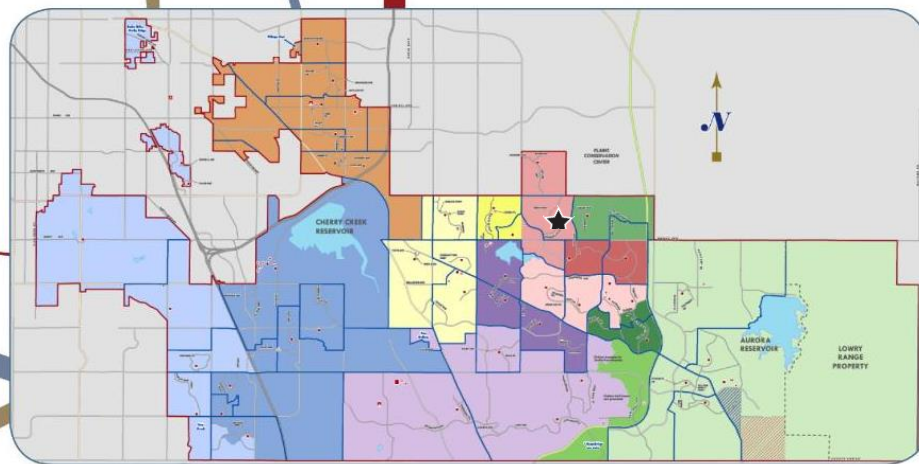
2021
CHERRY CREEK

Sunrise Elementary School

4050 South Genoa Way
Aurora, Colorado 80013

Year Opened 1984
Current Square Footage 72,507
Site Acreage 13.3

sunrise.cherrycreekschools.org



Proposed Investment	2016 Proposed Improvements
\$500,000	Innovation
\$1,657,420	Asphalt and concrete work; carpet/flooring replacements; fire protection system, mechanical system, and plumbing upgrades
Bond Year	Facility Improvement History
1990	Building addition and renovation
2003	HVAC system replacement
2008	Lighting system upgrade; plumbing fixture, and piping replacements
2012	Security camera and DVR to digital IP system, fire alarm notification system, exterior lighting, gate valve, water fountain, boiler and chiller upgrades; door hardware/keying, roof, and mechanical system replacements; restroom floor repairs; door glazing/framing at north and south ends of building; kiln hood installation

MAINTAINING COMMUNITY INVESTMENT

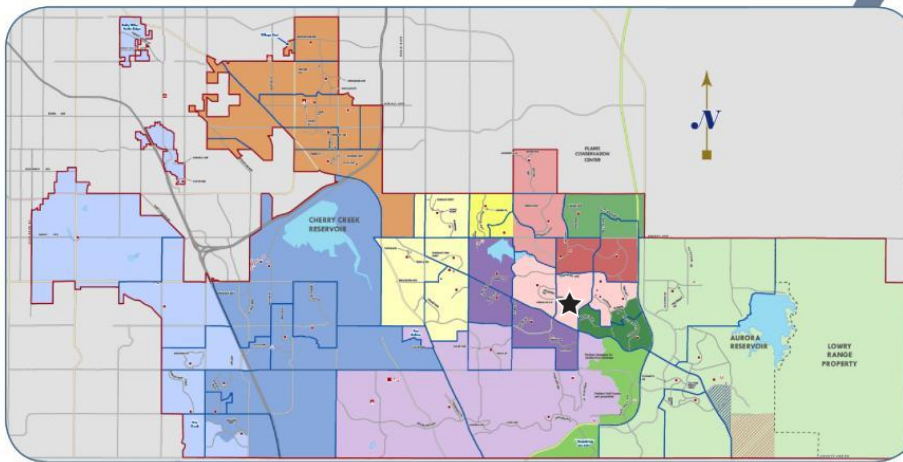


Timberline Elementary School

5500 South Killarney Street
Aurora, Colorado 80015

Year Opened 1986
Current Square Footage 52,800
Site Acreage 10.26

timberline.cherrycreekschools.org



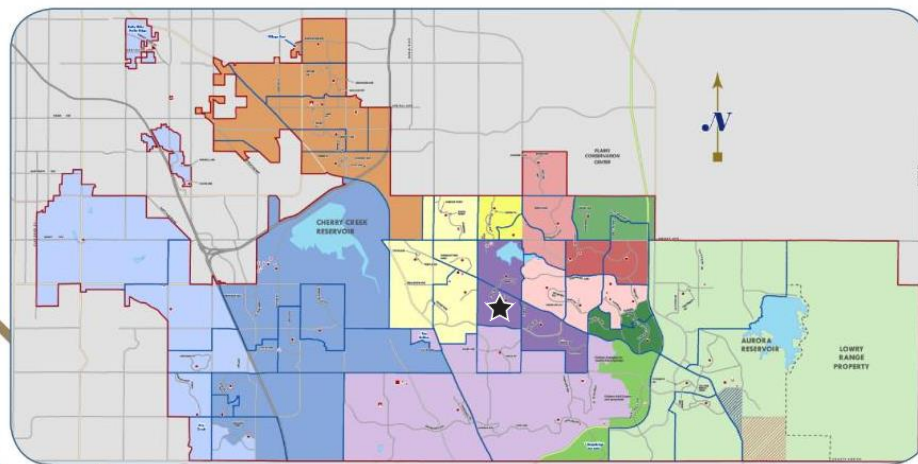
Proposed Investment	2016 Proposed Improvements
\$500,000	Innovation
\$ 75,000	Carpet/flooring replacement
Bond Year	Facility Improvement History
2003	HVAC system upgrade
2008	Lighting system upgrade; plumbing fixture and domestic hot water system replacements
2012	Security camera and DVR to digital IP system, exterior lighting, kiln hood, gate valve, exhaust fan, water fountain, gym sound system, gym dimming system, and crawlspace drainage upgrades; door hardware/keying, media center carpet, and roof replacements; restroom and cafeteria floor repairs; interior painting

Trails West Elementary School

5400 South Waco Street
Centennial, Colorado 80015

Year Opened 1980
Current Square Footage 55,119
Site Acreage 9.46

trailswest.cherrycreekschools.org



Proposed Investment	2016 Proposed Improvements
\$ 500,000	Innovation
\$3,099,935	Asphalt and concrete work; fire protection system, mechanical system and plumbing upgrades; roof replacement
Bond Year	Facility Improvement History
1990	Classroom additions; stage/music area, administrative office, media center, and cafeteria renovations
2003	HVAC system renovation
2008	General and special education classroom, corridor, kitchen, music room, gym, cafeteria, library, computer lab, art room, student restroom, and administrative office remodeling; flooring and fire alarm system upgrades; lighting, electrical distribution system, and ceiling replacements; asphalt playground repairs; rotomilling and installation of new topping to existing asphalt drives and parking lots; landscape and irrigation work
2012	Security camera and DVR to digital IP system, exterior lighting, gate valve, gym dimming system, and generator upgrades; kiln hood installation

MAINTAINING COMMUNITY INVESTMENT



2021
CHERRY CREEK

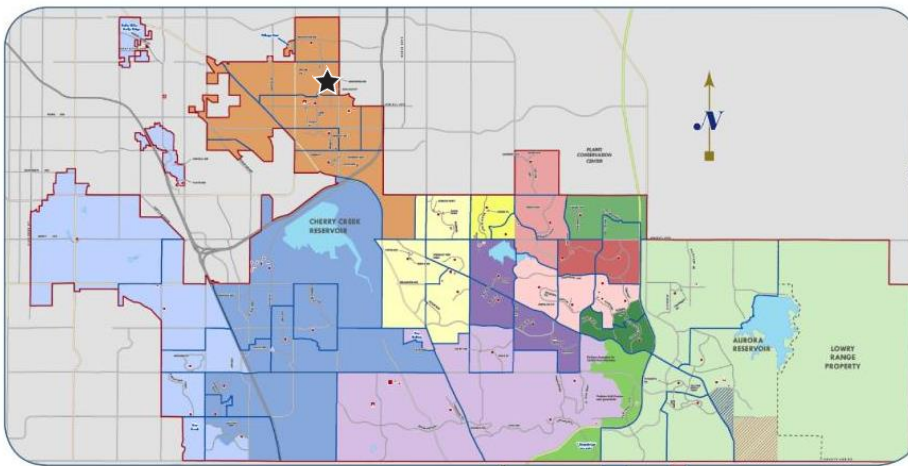


Village East Community Elementary School

1433 South Oakland Street
Aurora, Colorado 80012

Year Opened	1971
Current Square Footage	69,650
Site Acreage	6.64

villageeast.cherrycreekschools.org



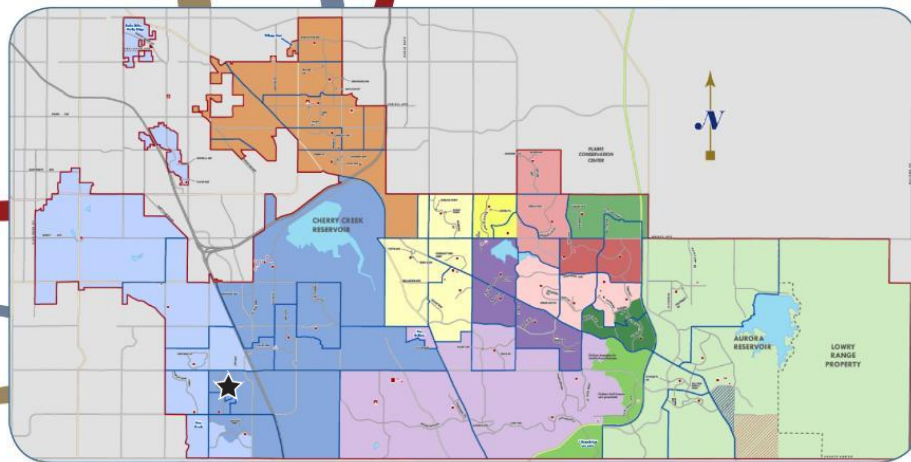
Proposed Investment	2016 Proposed Improvements
\$500,000	Innovation
\$2,217,250	Cafeteria renovation; asphalt and concrete work; carpet/flooring and roof replacements
Bond Year	Facility Improvement History
2003	Building addition and renovation
2008	Gym lighting upgrade
2012	Security camera and DVR to digital IP system, gym dimming system, gym sound, gate valve, exhaust fan, plumbing fixture, and backflow device upgrades; kiln hood installation

Walnut Hills Community Elementary School

8195 East Costilla Boulevard
Centennial, Colorado 80112

Year Opened 1969
Current Square Footage 54,940
Site Acreage 4.68

walnuthills.cherrycreekschools.org



Proposed Investment	2016 Proposed Improvements
\$500,000	Innovation
\$183,420	Concrete work; carpet/flooring replacement; fire protection system upgrade
Bond Year	Facility Improvement History
1995	HVAC system replacement
1999	Building addition and renovation
2012	Security cameras and DVR to digital IP system, gym dimming system, exterior lighting, building drainage, mechanical system, and boiler upgrades; gym carpet and kiln hood installations; glazing/framing of all doors with single pane windows

MAINTAINING COMMUNITY INVESTMENT

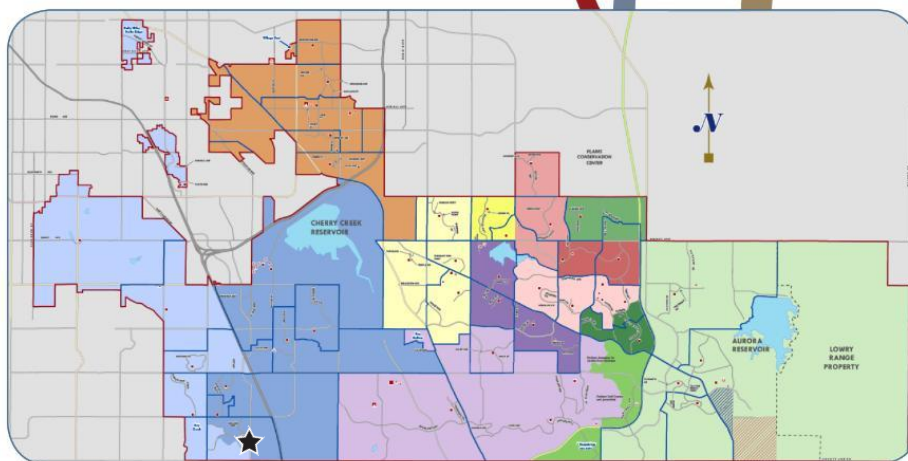


Willow Creek Elementary School

7855 South Willow Way
Centennial, Colorado 80112

Year Opened 1977
Current Square Footage 52,066
Site Acreage 7.47

willowcreek.cherrycreekschools.org



Proposed Investment	2016 Proposed Improvements
\$ 500,000	Innovation
\$2,521,820	Concrete work; window/caulking, fire protection system, mechanical system, and plumbing upgrades
Bond Year	Facility Improvement History
1990	Administrative area and stage addition; cafeteria, media center and art room renovations
2003	HVAC system replacement
2008	General and special education classroom, corridor, kitchen, music room, gym, cafeteria, library, computer area, art room, student restroom, and administrative office remodeling; kitchen exhaust system, classroom carpeting, lighting and ceiling replacements; asphalt playground repairs; rotomilling and installation of new topping to existing asphalt drives and parking lots; site grading; landscape and irrigation work; electrical distribution system and fire alarm system upgrades
2012	Security camera and DVR to digital IP system, retaining wall, exterior lighting, gate valve, and gym dimming system upgrades; playground equipment and back-up generator replacements; kiln hood installation

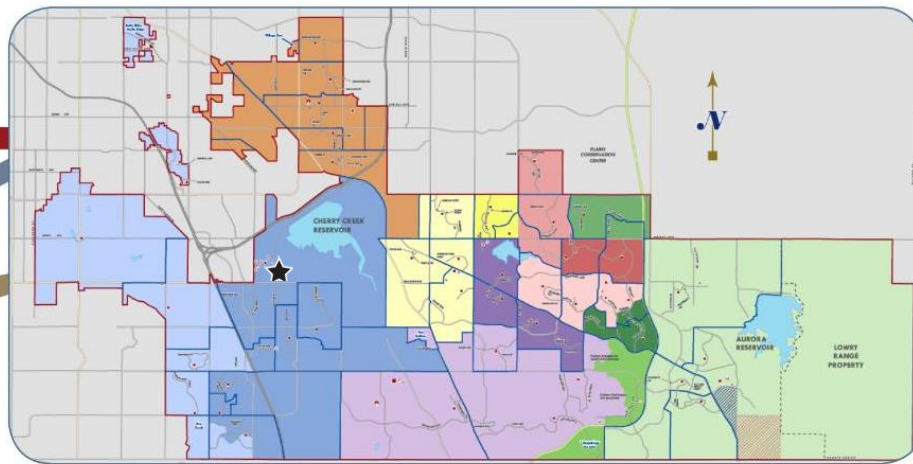


Campus Middle School

4785 South Dayton Street
Greenwood Village, Colorado 80111

Year Opened 1971
Current Square Footage 175,743
Site Acreage (included in CCHS) 87.22

campus.cherrycreekschools.org



Proposed Investment	2016 Proposed Improvements
\$750,000	Innovation
\$2,441,170	Asphalt and concrete work; fire protection system, mechanical system, and plumbing upgrades; roof replacement; track resurfacing; traffic redesign
Bond Year	Facility Improvement History
1990	Classroom, media area, cafeteria and gymnasium addition; technology lab and administrative area renovation
1999	Building renovation and addition
2003	Mechanical controls and boiler replacement
2008	Front entry, science labs, HVAC system, and music room renovations; lighting system, electrical system, technology infrastructure, door/hardware, plumbing, and structural upgrades; storage area additions; carpet/flooring, back-up generator, sewage ejection system, and emergency lighting replacements
2012	Security camera and DVR to digital IP system, exterior lighting, elevator, main gymnasium, locker room and office upgrades; hallway floor repairs

MAINTAINING COMMUNITY INVESTMENT

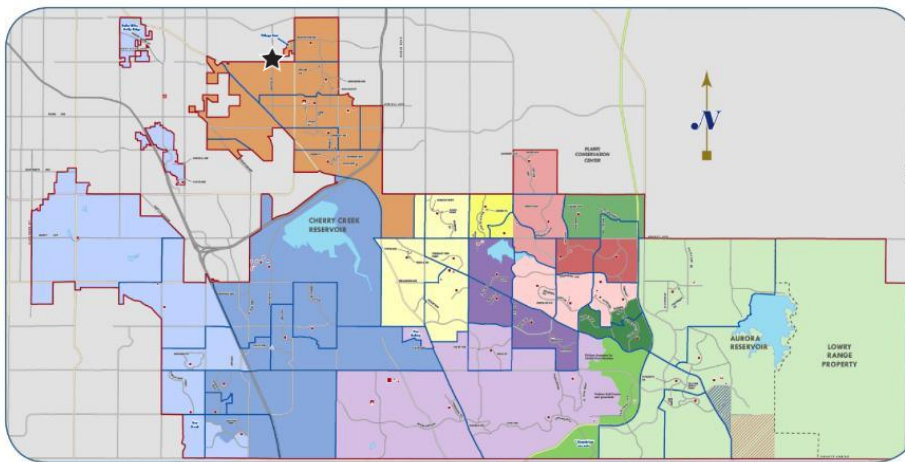


Challenge School Magnet School for Grades K-8

9659 East Mississippi Avenue
Denver, Colorado 80247

Year Opened	2002
Current Square Footage	62,000
Site Acreage	9.65

challenge.cherrycreekschools.org



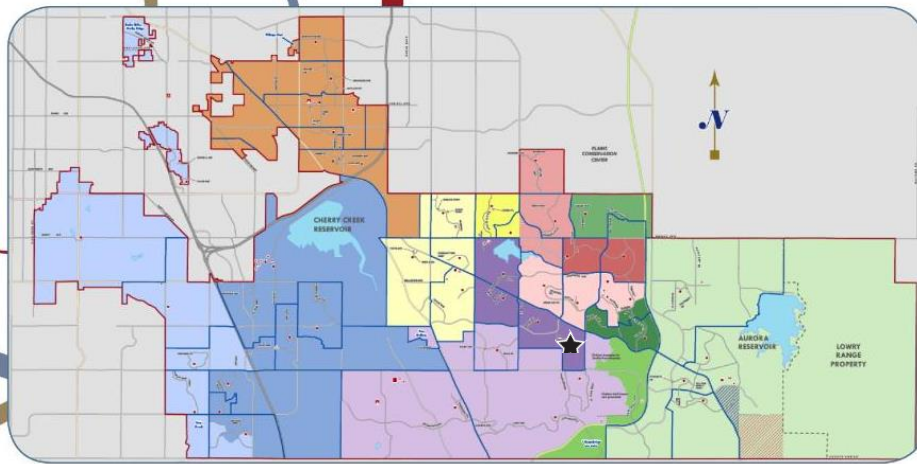
Proposed Investment	2016 Proposed Improvements
\$500,000	Innovation
\$ 81,920	Asphalt and concrete work; door/hardware and fire protection system upgrades
Bond Year	Facility Improvement History
2002	Original construction
2012	Security camera and DVR to digital IP system, plumbing, and science classroom neutralization tank upgrades; interior painting; wallpaper replacement; glazing and framing of doors at main entrance

Falcon Creek Middle School

6100 South Genoa Street
Aurora, Colorado 80016

Year Opened 1999
Current Square Footage 140,000
Site Acreage 24.82

falconcreek.cherrycreekschools.org



MAINTAINING COMMUNITY INVESTMENT

Proposed Investment	2016 Proposed Improvements
\$750,000	Innovation
\$376,420	Asphalt and concrete work; door/hardware, electrical system, and fire protection system upgrades
Bond Year	Facility Improvement History
2008	Underdrain system expansion
2012	Relief fan variable frequency drive and security camera and DVR to digital IP system upgrades; block/brick resealing; hallway carpet and track surface replacement; main gymnasium floor and pond stormwater repairs; cooling tower refurbishment; crawlspace drainage improvement

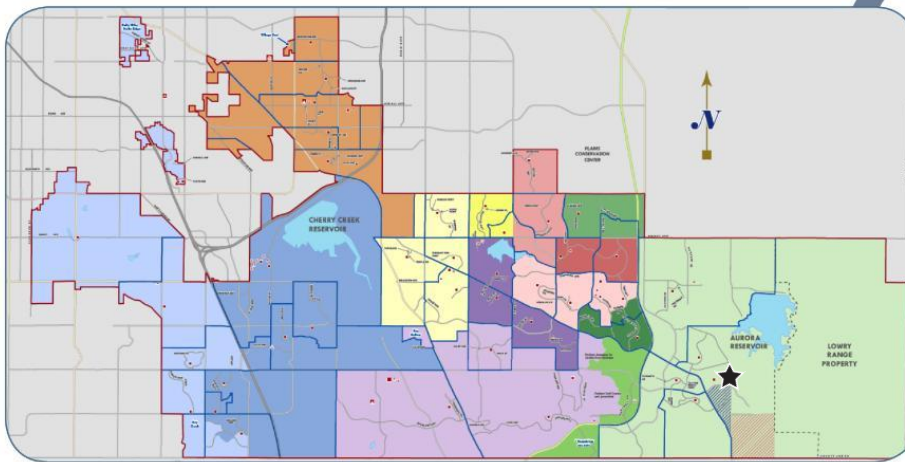


Fox Ridge Middle School

26301 East Arapahoe Road
Aurora, Colorado 80016

Year Opened 2008
Current Square Footage 172,000
Site Acreage 11.91

foxridge.cherrycreekschools.org



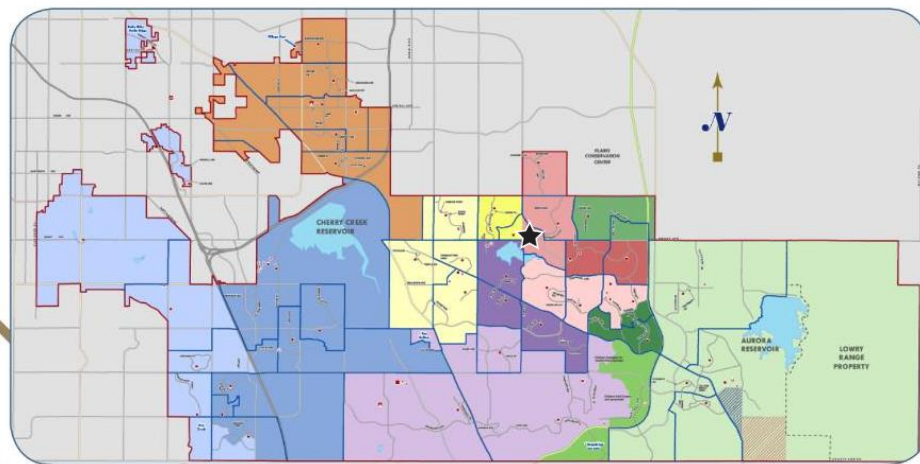
Proposed Investment	2016 Proposed Improvements
\$750,000	Innovation
\$195,900	Asphalt and concrete work; track resurfacing
Bond Year	Facility Improvement History
2008	Original construction
2012	Security camera and DVR to digital IP system upgrades

Horizon Community Middle School

3981 South Reservoir Road
Aurora, Colorado 80013

Year Opened 1982
Current Square Footage 168,500
Site Acreage 27.08

horizon.cherrycreekschools.org



Proposed Investment	2016 Proposed Improvements
\$ 750,000	Innovation
\$1,302,000	Breezeway renovation; asphalt and concrete work; windows/caulking, electrical system, mechanical system, and plumbing upgrades; track resurfacing
Bond Year	Facility Improvement History
1990	Building addition
1999	HVAC system replacement
2008	Lighting system and temperature control system upgrades; fire alarm system, sound system and plumbing fixture replacements
2012	Security camera and DVR to digital IP system, fire alarm notification system, PA system, elevator, exterior lighting, and plumbing upgrades; power and data (in former open classroom area), and carpet (in hallway, media center and all classrooms) installation; bridge concrete and metal, all single pane windows, door hardware/keying, roof, and horizontal ceiling grid replacements; restroom floor repairs; auxiliary gym floor replaced with wood; interior painting

MAINTAINING COMMUNITY INVESTMENT



2021
CHERRY CREEK

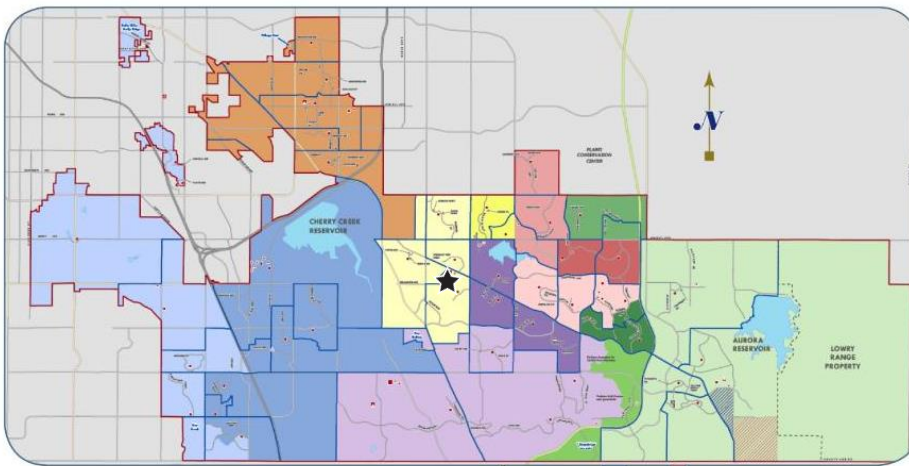


Laredo Middle School

5000 South Laredo Street
Aurora, Colorado 80015

Year Opened	1974
Current Square Footage	171,954
Site Acreage	81.76

laredo.cherrycreekschools.org



Proposed Investment	2016 Proposed Improvements
\$750,000	Innovation
\$764,670	Asphalt and concrete work; door/hardware and fire protection system upgrades; track resurfacing; cafeteria renovation
Bond Year	Facility Improvement History
1990	Building renovation and addition; HVAC system replacement
2008	Lighting system and ceiling partial replacements; minor HVAC system and plumbing upgrades
2012	Security camera and DVR to digital IP system, fire alarm notification system, PA system, sewage lift, exterior lighting, mechanical system and plumbing, exterior door, window/frame, classroom and restroom flooring upgrades; power and data (in former open classroom area) installation; door hardware/keying and roof replacements; interior and exterior painting



Liberty Middle School

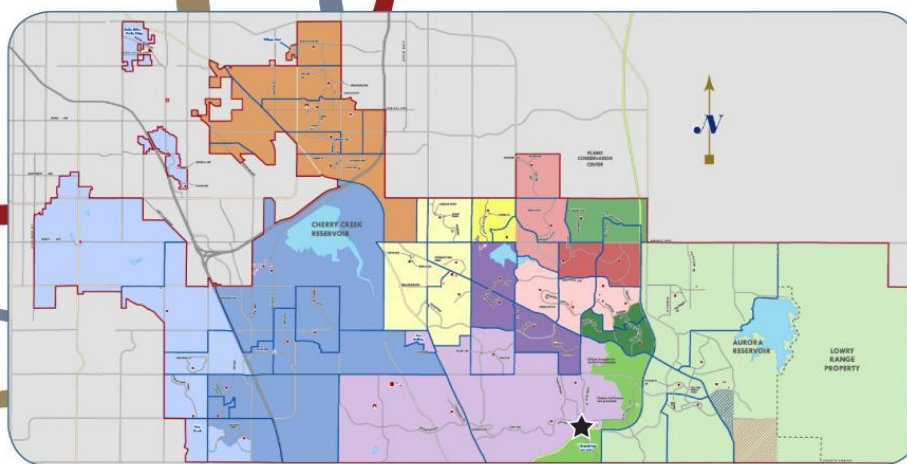
21500 East Dry Creek Road
Aurora, Colorado 80016

Year Opened 2002

Current Square Footage 145,500

Site Acreage 26.8

liberty.cherrycreekschools.org



Proposed Investment	2016 Proposed Improvements
\$750,000	Innovation
\$223,070	Asphalt and concrete work; fire protection system upgrade; track resurfacing
Bond Year	Facility Improvement History
2002	Original Construction
2012	Security camera and DVR to digital IP system, exhaust fan variable frequency drive, gym sound system, and trap seal upgrades; caulking; main gym floor and pond stormwater repairs; interior painting

MAINTAINING COMMUNITY INVESTMENT

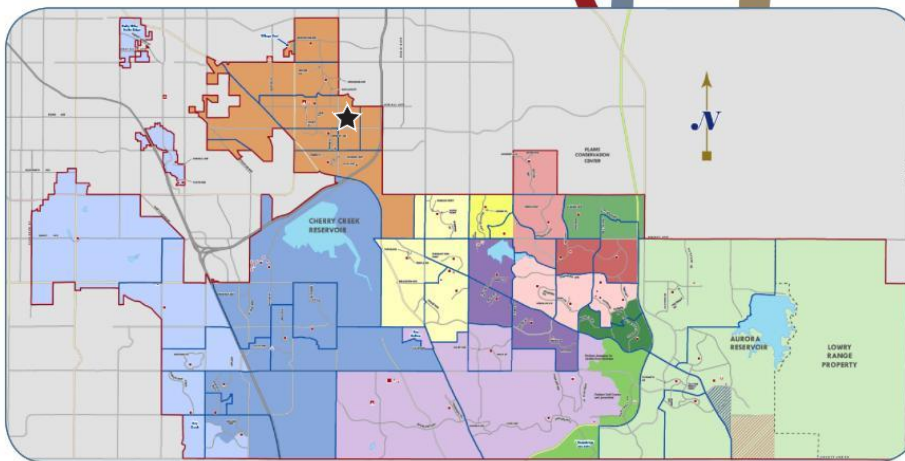


Prairie Middle School

12600 East Jewell Avenue
Aurora, Colorado 80012

Year Opened 1977
Current Square Footage 176,656
Site Acreage (included in OHS campus) 66.99

prairie.cherrycreekschools.org



Proposed Investment	2016 Proposed Improvements
\$750,000	Innovation
\$2,149,800	Cafeteria renovation; asphalt and concrete work; carpet/flooring, electrical system, and roof replacement; track resurfacing
Bond Year	Facility Improvement History
1989	Building addition
1999	Building renovation; administration addition
2008	Lighting system upgrade; back-up generator, domestic heating water system, water heating boiler, rooftop HVAC system, and air terminal equipment replacements; plumbing fixture repairs
2012	Security camera and DVR to digital IP system, exterior lighting, fire alarm notification system, PA system, elevator, mechanical system and plumbing upgrades; power and data (in former open classroom area) installation, exterior door, window/frame, classroom flooring, second story wall covering, door hardware/keying and roof replacements; interior and exterior painting



2021
CHERRY CREEK

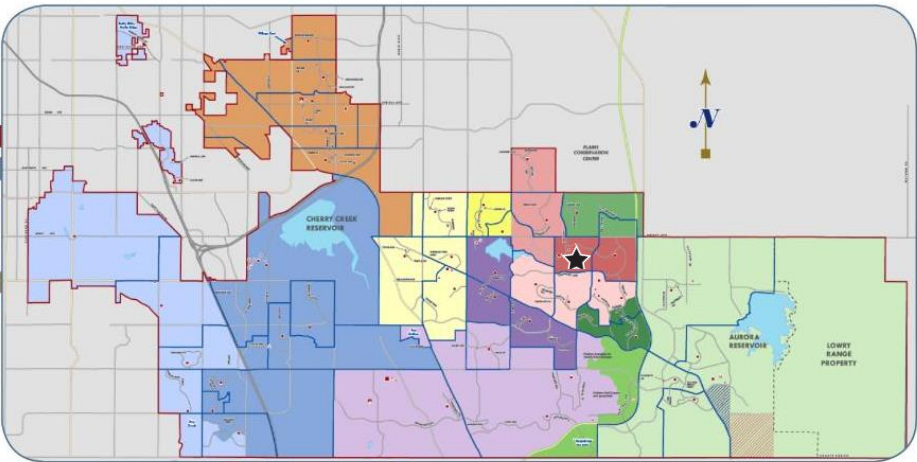


Sky Vista Middle School

4500 South Himalaya Street
Aurora, Colorado 80015

Year Opened 2005
Current Square Footage 156,245
Site Acreage 27.2

skyvista.cherrycreekschools.org



Proposed Investment	2016 Proposed Improvements
\$750,000	Innovation
\$307,150	Asphalt and concrete work; mechanical system and plumbing upgrades; track resurfacing
Bond Year	Facility Improvement History
2005	Original Construction
2012	Security camera and DVR to digital IP system and cooling tower upgrades



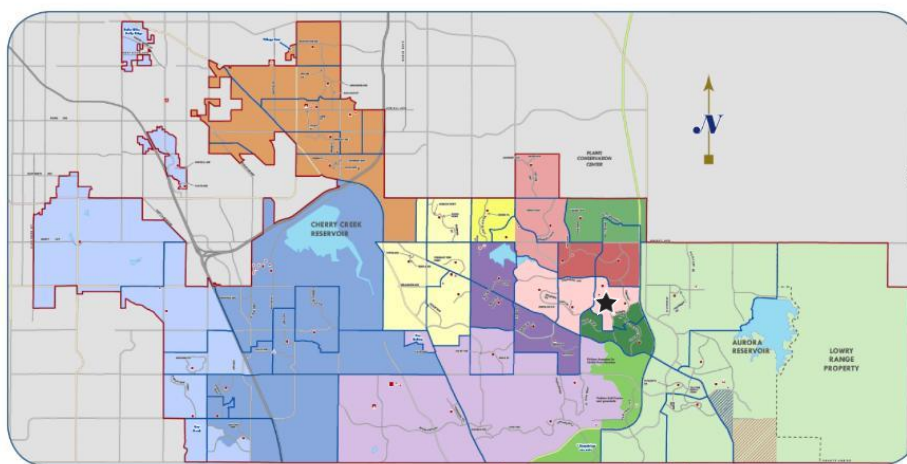


Thunder Ridge Middle School

5250 South Picadilly Street
Aurora, Colorado 80015

Year Opened 1992
Current Square Footage 176,000
Site Acreage (included in EHS) 89.02

thunderridge.cherrycreekschools.org



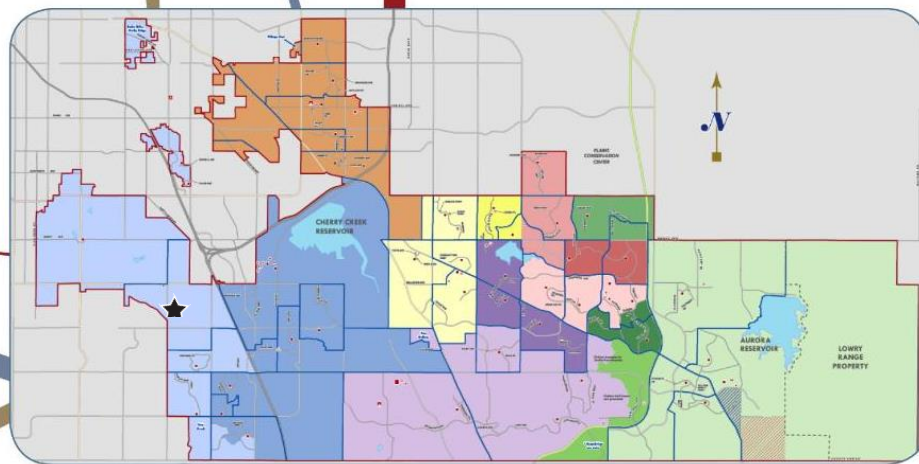
Proposed Investment	2016 Proposed Improvements
\$750,000	Innovation
\$ 43,240	Asphalt work; fire protection system upgrade
Bond Year	Facility Improvement History
2008	Lighting system upgrade; plumbing fixture replacements
2012	Security camera and DVR to digital IP system, fire alarm notification system, PA system, elevator, exterior lighting and mechanical system upgrades; plumbing, roof, deteriorating doors, window/frame, classroom flooring, door hardware/keying replacements; partial track resurfacing; main gym floor repair; interior and exterior painting

West Middle School

5151 South Holly Street
Greenwood Village, Colorado 80111

Year Opened 1966
Current Square Footage 158,500
Site Acreage 18.03

west.cherrycreekschools.org



MAINTAINING COMMUNITY INVESTMENT

Proposed Investment	2016 Proposed Improvements
\$ 750,000	Innovation
\$1,130,120	Asphalt and concrete work; fire protection system upgrades; roof replacement; track resurfacing
Bond Year	Facility Improvement History
1990	Classroom, gym, and cafeteria additions; technology lab and administrative area renovations
2003	Windows, HVAC system, and roof replacements
2008	Classroom, science area, technology infrastructure, flooring/carpet, door/hardware, lighting, electrical system, and plumbing upgrades; ceiling and sanitary sewer replacements; HVAC system renovations; fire suppression system installation
2012	Security camera and DVR to digital IP system upgrades; mechanical system replacements; tennis court resurfacing

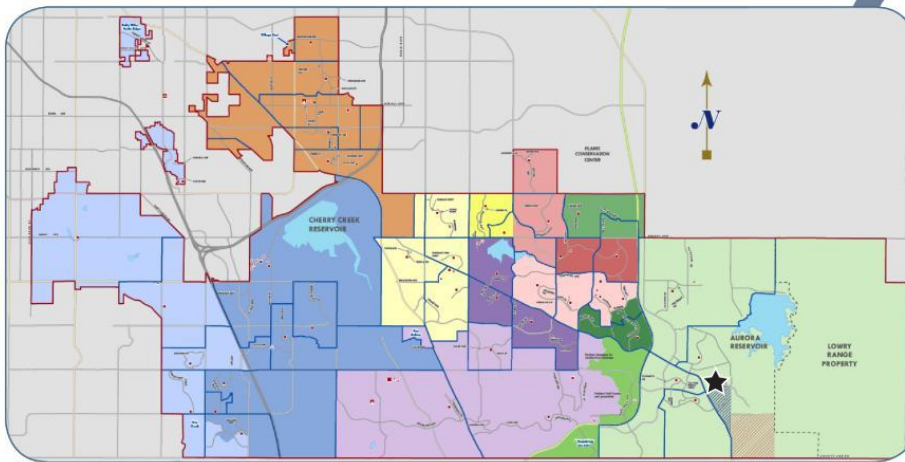


Cherokee Trail High School

25901 East Arapahoe Road
Aurora, Colorado 80016

Year Opened	2003
Current Square Footage	391,000
Site Acreage	86.22

cherokeetrail.cherrycreekschools.org



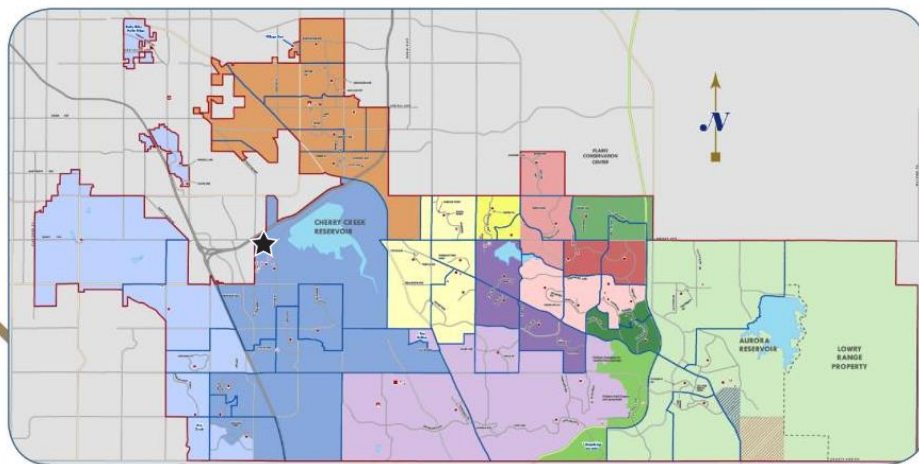
Proposed Investment	2016 Proposed Improvements
\$279,200	Asphalt and concrete work; track and tennis court resurfacing
Bond Year	Facility Improvement History
2003	Original construction
2012	Security camera and DVR to digital IP system upgrades; classroom additions; STEM facility, elevator, and condenser water bypass loop upgrades; track replacement

Cherry Creek High School

9300 East Union Avenue
Greenwood Village, Colorado 80111

Year Opened 1953
Current Square Footage 471,632
Site Acreage 87.22

cherrycreek.cherrycreekschools.org



Proposed Investment	2016 Proposed Improvements
\$16,312,751	Asphalt and concrete work; door/hardware, electrical system, fire protection system, mechanical system, and plumbing upgrades; roof replacement; traffic redesign; track and tennis court resurfacing
Bond Year	Facility Improvement History
1995	Building addition and renovation
2003	Fine Arts building, physical education multi-use area, autism room, and chemistry lab additions
2008	Lighting system, theatre fire suppression system, minor plumbing upgrades; heating water boiler, plumbing fixtures, swimming pool circulation system, boiler system piping, north gymnasium HVAC equipment, public address system, emergency generator, telephone room air conditioner replacements
2012	Swimming pool, roof, locker, flooring with asbestos involvement, north gymnasium bleachers, window and frame, ceiling tile, hollow metal store front, restroom flooring, door hardware/keying, theatre seating, swimming pool equipment, mechanical and plumbing equipment, and caulking replacements; gymnasium floor sanded; interior and exterior painting; STEM facility, interior and exterior lighting, fire alarm notification system, main switchboard, security camera and DVR to digital IP system, service conductor distribution, and dimming system upgrades

MAINTAINING COMMUNITY INVESTMENT



2021
CHERRY CREEK

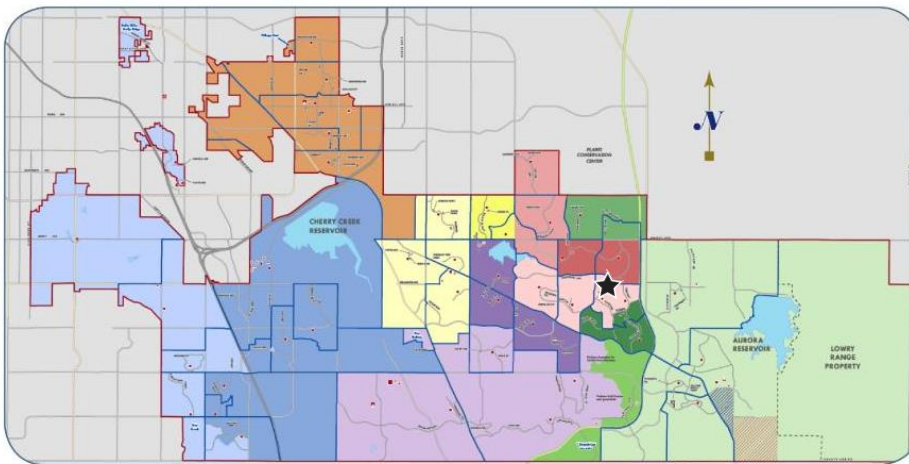


Eaglecrest High School

5100 South Picadilly Street
Aurora, Colorado 80015

Year Opened	1988
Current Square Footage	353,334
Site Acreage	94.02

eaglecrest.cherrycreekschools.org



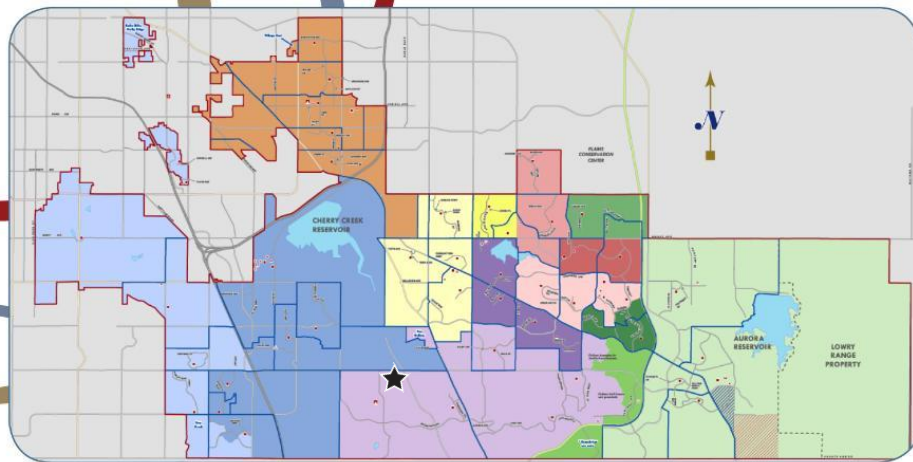
Proposed Investment	2016 Proposed Improvements
\$219,770	Asphalt and concrete work; door/hardware, electrical system and fire protection system upgrades
Bond Year	Facility Improvement History
1999	Cafeteria and weight room renovations
2003	Building addition; HVAC system replacement
2008	Lighting system upgrades; fire system devices, evaporative cooler, HVAC system replacements
2012	Security camera and DVR to digital IP system, STEM facility, elevator, dimming system, fire alarm notification system, PA system, exterior lighting, auditorium sound, mechanical equipment, boiler and plumbing upgrades; generator, classroom carpeting, roof, locker room, pool area lockers, retaining wall replacements; band room access renovation; pond stormwater repairs; tennis court resurfacing; track lanes received structural spray

Endeavor Academy

14076 East Briarwood Avenue
Centennial, Colorado 80112

Year Opened 2001
Current Square Footage 52,323
Site Acreage 6

endeavoracademy.cherrycreekschools.org



Proposed Investment	2016 Proposed Improvements
\$20,000	Asphalt and concrete work
Bond Year	Facility Improvement History
2008	Classroom additions for 9 th and 10 th grades
2012	Security camera and DVR to digital IP system upgrades

MAINTAINING COMMUNITY INVESTMENT

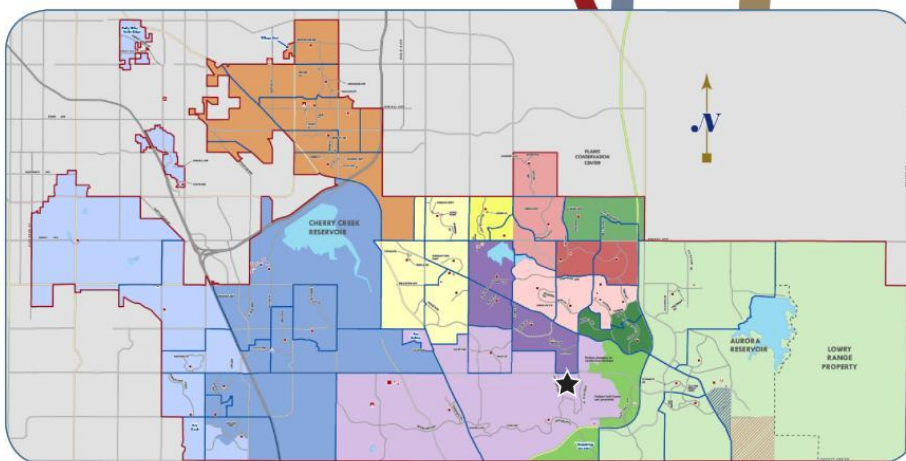


Grandview High School

20500 East Arapahoe Road
Aurora, Colorado 80016

Year Opened	1998
Current Square Footage	368,500
Site Acreage	77.05

grandview.cherrycreekschools.org



Proposed Investment	2016 Proposed Improvements
\$734,600	Asphalt and concrete work; door/hardware and fire protection system upgrades; track and tennis court resurfacing
Bond Year	Facility Improvement History
1998	Original construction
2012	STEM facility, elevator, and security camera and DVR to digital IP system upgrades; classroom additions; ductwork, heat exchanger, plumbing, flooring/carpet replacements; restroom renovations; stucco resealing; block weather-proofing; wall repairs; interior painting

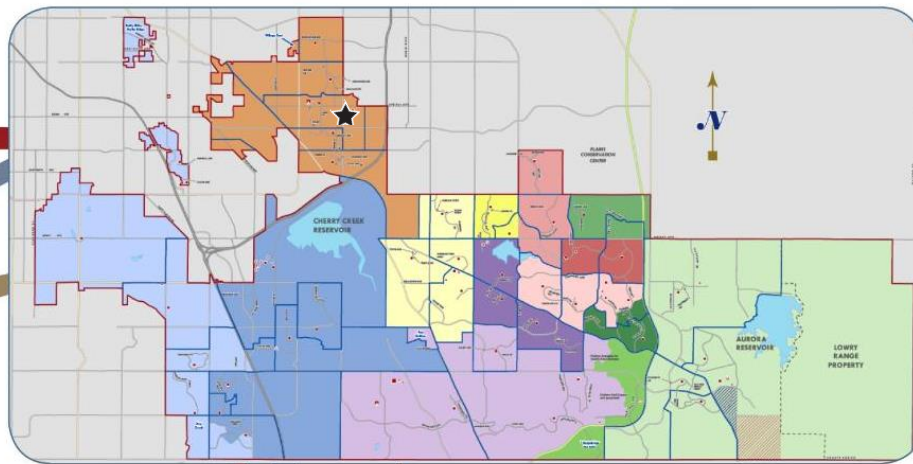


Overland High School

12400 East Jewell Avenue
Aurora, Colorado 80012

Year Opened 1978
Current Square Footage 331,530
Site Acreage 66.99

overland.cherrycreekschools.org



Proposed Investment	2016 Proposed Improvements
\$704,150	Concrete work; fire protection system upgrades, roof replacement; track and tennis court resurfacing
Bond Year	Facility Improvement History
1995	Classroom additions; media center and administrative area renovations
1999	Media center, dance center, weight room, and resource area classroom additions; locker room and athletic office renovations; HVAC system and controls upgrades
2008	Electrical system, lighting, flooring/carpet, and science plumbing fixture upgrades; window, classroom casework, door/door hardware, ceiling, emergency generator, domestic hot water system, heating boilers, cooling system, and tower replacements; fire suppression system added to southwest areas
2012	Security camera and DVR to digital IP system, STEM facility, dimming system, and elevator upgrades; mechanical system, plumbing system, classroom flooring, locker, door hardware/keying replacements; traffic flow patterns for Overland High School and Prairie Middle School redesigned; bleacher repairs; asphalt overlay installation in south and west lots

MAINTAINING COMMUNITY INVESTMENT



2021
CHERRY CREEK

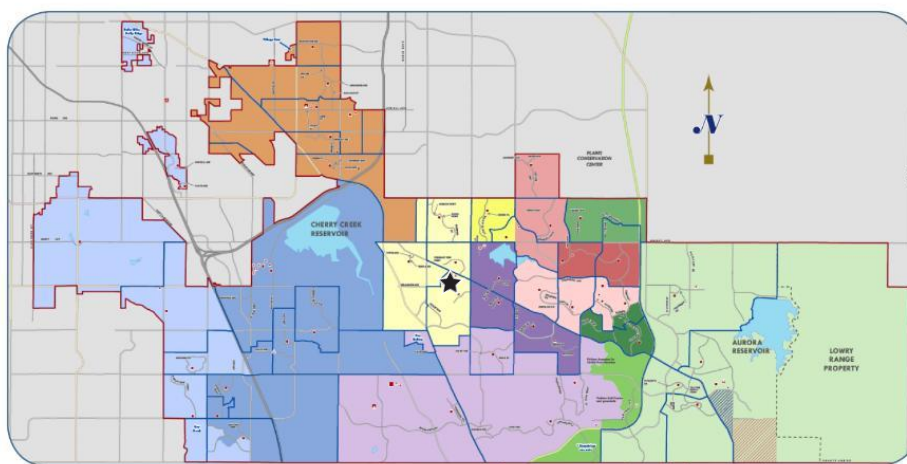


Smoky Hill High School

16100 East Smoky Hill Road
Aurora, Colorado 80015

Year Opened 1975
Current Square Footage 373,536
Site Acreage 81.76

smokyhill.cherrycreekschools.org



Proposed Investment	2016 Proposed Improvements
\$1,592,150	Cafeteria renovation; concrete work; fire protection system, mechanical system, and plumbing upgrades; track and tennis court resurfacing
Bond Year	Facility Improvement History
1999	Auditorium renovation; gym floor replacement
2003	HVAC system replacement
2008	Athletic area remodeling; restroom, floor covering, door/door hardware, fire alarm system, and fire suppression system upgrades; swimming pool, partial window, elevator, lighting, electrical distribution systems, back-up generator, heating water boiler, chilled water cooling system, plumbing fixture and sewage ejector pump replacements
2012	Security camera and DVR to digital IP system, STEM facility, elevator, dimming system, exterior lighting, back-up generator, auditorium sound, mechanical systems, and deluge system upgrades; skylight and frames, theatre seating, roof, cafeteria windows/frames, door hardware/keying, and locker replacements; classroom carpet installation; asphalt overlay installation in south parking lot







Dedicated to Excellence
Cherry Creek Schools